

2020 SECRETARIAT REPORT ON RESEARCH AND STATISTICS

Introduction

The activities and information included in this report refer to the period between 1 October 2019 and 5 October 2020 (the reporting period)¹. All the fisheries statistics, biological statistics and compliance related information have been presented by the Secretariat to the SCRS Working Groups during inter-sessional and species groups meetings. After five years of continuous improvements, the Secretariat observed during 2020 a slight regression in data completion quality (more datasets only passed the SCRS filtering criteria after the corrections made by the Secretariat) and submissions not using the most recent ICCAT electronic forms (2020 version). The Secretariat will work closely with CPCs' scientific correspondents to ameliorate these problems in the future. Regarding the activities conducted by the Secretariat in the most recent years, in addition to the normal activities developed on statistics, publications, data funds management and others, the Secretariat is dedicating substantial additional work related to stock assessment activities, whether participating actively in the assessment or coordinating and managing external support to the SCRS work. 2020 was particularly difficult for the Secretariat, due to the increased number of SCRS and Commission meetings (20 and 3, respectively). Such a high number of meetings greatly limited the capacity of the Secretariat, in addition to the fact that due to the pandemic most of these meetings were held online, which entails an additional workload related to the associated logistics, preparatory work and online meeting management.

1. Statistical and biological information reporting status

ICCAT Circular #0667/2020 of 3 February 2020 established the provisions for reporting fishery statistics and biological data to ICCAT. The receipt date of each email (with the respective files attached) was adopted as the official submission date of the Contracting, Cooperating Party, Entity or Fishing Entity (CPC). The deadlines for the intersessional meetings (all requiring finalised data up to 2019), established by default as 15 days ahead of the start of the meeting, were: Mediterranean Swordfish Data Preparatory meeting, 2 March 2020; Atlantic Bluefin tuna Intersessional meeting, 5 April 2020; Porbeagle Stock Assessment meeting, 1 June 2020; Atlantic Albacore Stock assessment meeting, 15 June 2020. The general deadline for reporting 2019 statistics (or any required revision to prior years) of all species and fisheries was 31 July 2020. A tolerance of 24 hours has been given to include all the time zones.

A total of 59 ICCAT CPCs (53 Contracting Parties (CP), plus 6 Cooperating non-Contracting Parties/Entities/Fishing Entities (NCC)) have reporting obligations to ICCAT. For statistical purposes, this corresponds to a total of 77 flag related CPCs (51 CP + 1 CP [16 EU Member States] + 1 CP [4 UK Overseas Territories Member States] + 6 NCC) who have reported information to ICCAT in recent years. The term "flag CPC" was adopted here to refer to those 77 flags.

The Secretariat continues to use (since 2015) the SCRS filtering criteria (Filters 1 and 2, described in Addendum 2 to Appendix 8 of 2013 SCRS report, updated by the SCRS in 2017) to validate and accept statistical data received under official formats. The filtering criteria have been embedded in the electronic forms since 2015.

For 2019 data Filter 1 was effectively applied and the results are presented in the SCRS Report Cards (**Tables 1, 2, 3, 4, and 5**, with a summary in **Figure 1**). The "orange" cells indicate the datasets that have not passed Filter 1. The "green" and "yellow" cells indicate the datasets that have passed Filter 1, and were reported before and after the deadline, respectively. The Secretariat has corrected the rejected datasets and inform the respective CPCs on the revisions needed. The updated datasets that arrived before 31 July are shown in "green", and the ones arriving afterwards are shown in "yellow". All the "orange" cells were provisionally integrated into the ICCAT database system (ICCAT-DB), and marked for revision. Filter 2 was also applied, and the results presented to the SCRS. Both filters were used on every Task 1 and Task 2 dataset

¹ Statistical data received by the Secretariat in valid formats (version 2019/2020 of the electronic forms, or special formats) and by 5 October 2020 was considered in this report. Information submitted afterwards is not referred to in the report.

received (scenario 2, methodology described in Palma and Gallego, 2015²). The implementation of the SCRS filtering criteria to the remainder of the statistical and tagging forms will be progressively carried out in the following years, because it requires that the Secretariat prepare in advance the corresponding databases and forms, and develop the data integration tools.

About 95% of all of the “ST” statistical forms (ST01, ST02, ST03, ..., ST10) received (a total of about 950 forms) during the reporting period were automatically processed, validated and stored, using the new JAVA “automated data processing framework” (nearly 100%, discounting the data arriving in special formats). The Secretariat has already enlarged the functionality of this framework to process the remainder of the statistical forms (ST07 through ST10) and has plans to include the automatic integration of the conventional tagging forms in the future (possible only after the tagging database redesign, which will also include an electronic tagging module).

Only three flag CPCs have used older SCRS forms to report 2019 data. These CPCs promptly replaced them with the 2020 version. The Secretariat reminds CPCs of the Commission's requirement of using the MOST RECENT standard electronic forms adopted by the SCRS for data submission.

The overall reporting status for 2019 data (summarised in **Table 5** and **Figure 1**), shows that 69 of the 77 flag CPCs (90%) have reported fisheries and biological information: 55 flags with catches (71%); 14 flags with no fishing activity (18%). No information was received from 8 flag CPCs (10%) over the reporting period: EU-Lithuania, Gambia, Grenada, Guinea Bissau, Guinea Rep., Philippines, Bolivia and Costa Rica.

1.1 Task 1

The two datasets of Task 1 statistics (T1FC fleet characteristics; T1NC nominal catches) are yearly based global information on (a) fishing capacity (using form ST01-T1FC), and (b) total catches by species (using form ST02-T1NC), both forms being mandatory for all CPCs. The Secretariat reminds that for T1NC, the statistical sampling areas are now mandatory (maps: www.iccat.int/Data/ICCAT_maps.pdf). The old Task 1 areas without geographical delimitation are optional.

1.1.1 Fleet characteristics (T1FC)

The information requested in form ST01-T1FC has two sub-forms. Sub-form ST01A is used to compile information by individual vessel. Sub-form ST01B, is used to compile information by groups of vessels, but only for small scale vessels (length overall less than 20 meters) not included in ST01A. Only the fishing vessels actively fishing within a given calendar year should be reported in ST01-T1FC.

The structure of the ST01 form adopted in 2015, allows to collect more complete and detailed information on effective fishing capacity, fleet structure, and optionally yearly based and gear independent nominal fishing effort (fishing days). However, the “optional” condition of reporting the nominal fishing effort (for 2019 data, about 70% of the flag CPCs reported fishing days) makes it unfeasible to obtain overall effort indicators and compromise possible estimations of total fishing capacity. Having the fishing days for each vessel in both Atlantic and Mediterranean regions would allow to effectively differentiate active from inactive vessels from all the authorised vessels to fish in the ICCAT Convention area. Hence, the Secretariat reiterates once again the request to make this field mandatory aiming to improve the quality of T1FC data and its potential use in scientific studies.

The T1FC Report Card for 2019 is presented in **Table 1**. For the sixth consecutive year (2014 to 2019 data) T1FC has been requested on an individual vessel basis, in agreement with the ICCAT vessel record requirements of the Commission for the 11 vessel authorisation lists, which facilitates the cross-validation process. The Secretariat reminds that this information is also used by the Commission (fulfilling the requirements under Rec. 15-08, which collects previous year vessel activity under some ICCAT fisheries (BFT-E, Tropical species, and, SWO-M).

The overall reporting ratio of ST01 for 2019 was 79% (61 flag CPCs) with 7 flag CPC having late submissions. From the corrections made to ST01, 10 flag CPCs needed revisions.

² Palma C. & Gallego J.L. 2015. Results of applying Filters 1 and 2 to the 2013 statistical data reported during 2014. ICCAT Col. Vol. Sci. Pap. 71(6): 3070-3084.

The vessel sizes (LOA) ranged from 5 to 195 meters in 2019 data, including small scale vessels reported in sub-form ST01B by seven flag CPCs. Near 1,500 small scale vessels reported in T1FC were not found in the ICCAT vessel record database (with about 53,980 vessels registered). Some cases could be related to different vessel characteristics being reported in the T1FC and in the ICCAT vessel record. Solving these inconsistencies will require additional work.

1.1.2 Nominal catch (T1NC)

Task 1 nominal catch data (T1NC) which contains landings and discards (dead and alive) by species, stock, gear, fleet and year (all in live weight) is a “key” dataset used in all the stock assessments. Thus, complete and timely available datasets are essential for SCRS work. The T1NC compiles (form ST02-T1NC) fishery statistics using two sub-forms. Sub-form ST02A, compiles positive catches (separating landings, dead discards, live discards, and live catches for farming facilities). Sub-form ST02B, compiles a “zero” catch matrix (major species/stock by gear) with positive fishing effort of active gears that have operated within the year. This approach, approved by the Commission (Res. 15-09), has greatly normalised and simplified the “zero” catch reporting obligation. Only one “zero” is now required per major species/stock and gear combination.

The T1NC Report Card for 2019 (**Table 2**) presents the CPCs that reported positive catches and the “zero” catches (excludes the SCRS catch estimations). A summary of the “zero” catches reported by flag CPCs and major species/stock in sub-form ST02B, is presented in **Table 15**. All the T1NC datasets received from 69 flag CPCs (90%), including the 12 flag CPCs with late-reports, were processed and presented to the SCRS. This includes some datasets corrected by the Secretariat (orange cells, marked for revision) associated to 13 flag CPCs. Only 8 flag CPCs (10%), have not yet reported this information. The total 2019 T1NC nominal catches (789,700 t) reported is similar to the average of the last five years (789,100 t).

1.2 Task 2

Task 2 statistics with catch-effort and size information are more detailed in terms of time (month) and area (1x1, 5x5, or, sampling areas), and often reflect a partial coverage associated to the total production (T1NC). Task 2 information is the main source of data used by the SCRS on stock assessments and the Secretariat on the estimation of important datasets, such as CATDIS, EFFDIS, CAS, and CAA by species (all used by the SCRS and the Commission). ICCAT CPCs must report three types of Task 2 information under their respective electronic forms:

- T2CE (catch & effort): using form ST03-T2CE,
- T2SZ (size samples): using form ST04-T2SZ,
- T2CS (catch-at-size): using form ST05-T2CS (only for ALB, BFT, BET, YFT, SKJ, SWO).

Or alternatively, any of the special agreed formats convened by the Secretariat and an ICCAT CPC.

There is also a special form (ST06-T2FM) used to report bluefin tuna caught by purse seiners and transferred to farming facilities, in both events, while caging and harvested after growing. These compiled datasets can be considered a special type of Task 2 size information. However, this information is treated separately (given the growth at the farms) and used in the stock assessment after discounting growth at farms.

1.2.1 Catch and effort

The T2CE Report Card for 2019 is presented in **Table 3**. A total of 57 flags CPCs (74% reporting ratio), including 4 late-reporting flag CPCs and 8 flags with corrections on their data, have reported T2CE. 20 flag CPCs (23%) have not yet properly submitted T2CE statistics for 2019.

All the T2CE information was reported by month and for the most part had the geographical resolution required by the SCRS (1x1 or better for surface fisheries, and, 5x5 or better for longline fisheries). The number of datasets reported with the exact geographical location (Latitude/Longitude) continues to increase. The number of species reported in T2CE datasets has also increased lately, in particular for the pelagic shark species. For the most recent years, the trend of reporting more detailed and complete T2CE has continued. Since 2017, the T2CE datasets without effort information are not integrated into ICCAT-DB, and explicit requests for revisions are always made by the Secretariat to the corresponding flag CPCs.

The Secretariat continues with a T2CE data recovery task, aiming to complete the gaps identified, and to replace “poor” datasets whenever possible, using the new levels of resolution required by the SCRS, such as monthly based datasets, spatial resolution of 1x1 squares for surface gears up to a maximum of 5x5 squares for longline gears. This task should continue in the future, and the Secretariat recommends a more active collaboration of CPC scientists and Statistical Correspondents.

An important part of the Secretariat estimations (CATDIS and EFFDIS) depends on the quality of T2CE. However, some deficiencies persist in some datasets reported, being the most problematic ones:

- Non-standard fishing effort types for certain gears (e.g. for longline “hooks” is the standard);
- Incomplete or partial species catch composition;
- Double counting of fishing effort, where same fishing effort is being reported several times in different forms for the same gear.

The Secretariat recalls that, as recommended by the SCRS several years ago, T2CE statistics should be in all cases reported with the most complete species catch composition. This rule will avoid the duplication of the fishing effort for the same fleet/gear/year combination, in cases where each species is reported in a different form with incompatible stratifications.

1.2.2 Size information

The T2SZ Report Card for 2019 is presented in **Table 4**. This Report Card also contains the datasets of T2CS (catch at size flag CPC estimates, for the six mandatory species) and size information T2SZ. It does not contain the bluefin tuna size samples arriving in form ST06-T2FM, or the bluefin tuna stereoscopic camera measurements. The inclusion of these two datasets into the T2SZ Report Card is performed manually after inventorying and checking all the datasets reported.

A total of 52 flag CPCs (68%), including 6 CPCs with submissions after the deadline, have reported T2SZ. 25 flag CPCs (32%) have not yet submitted T2SZ information for 2019.

Since 2017, the SCRS requires that all the T2SZ/T2CS datasets be reported by month, and with the highest geographical stratification possible (1x1, 5x5, 5x10, and, 10x10 grids only), maintaining the ICCAT Sampling Areas for biological port sampling. All the size datasets for 2019 arrived by month. The use of smaller geographical grids (1x1, 5x5, 5x10) has also increased slightly. The size/weight class bins reported for 2019 have followed the SCRS recommendation on size structures (1, 2, and 5 cm) and weight structures (1 kg). As opposed to the previous year, no error was observed in the units of the size/weight class bins (e.g. millimetres reported as centimetres) within 2019 size datasets.

Following Resolution 11-14 on the standardized presentation of scientific information, the SCRS developed the Standard Catalogues on data availability for a period of years, for all the major species and stocks. All the catalogues (28 tables) are presented in **Appendix 1**. These catalogues show the information for a “30 year” period (1990-2019), grouped by flag/gear group combinations, in terms of Task 1 nominal catches (ranked by importance in descending order), and the availability of Task 2 data catch and effort, size sampling, and catch-at-size, by year. This instrument, which summarises large amounts of information per species/stock, shows the level of data completeness/availability, and the data gaps, for the most important fisheries. In **Appendix 1** the catalogues are provided for the ten major tuna and billfish species and three main sharks stocks only. The catalogues for the main small tuna species, usually prepared for the Small Tunas Species Group intersessional meetings only, were also updated for the SCRS.

The SCRS scorecard on Task 1/2 data availability is presented in **Table 6**, using the methodology adopted by the SCRS in 2019 (SCRS/2019/45). It has the format adopted by the WGSAM (exception: last column having the relative score changes against the 2018 final year on the “30 year” time frame) and already contains all the valid 2019 data received during the reporting period. Two indications arise from the scorecard results: a) A general increase of all the scores as we reduce the time-scale scores from 30 to 10 year based periods; b) Overall, the scores coincide with how the SCRS categorises each species/stock in terms of fisheries data availability (data-poor/data-rich concepts).

1.3 Tagging

1.3.1 Electronic tags

The laboratories conducting tagging campaigns with electronic tags (pop-up, archival, etc.) in the Convention area have informed the Secretariat of 165 releases and 11 recoveries made during the reporting period.

1.3.2 Conventional tags

In relation to conventional tags, several Contracting Parties have reported to ICCAT a total of 122,785 released fish and 18,408 recoveries (**Table 7**) during the reporting period.

As in previous years, the Secretariat provided conventional tags for tagging experiments to the ICCAT scientific community (individual scientists or research institutions). During the reporting period, the Secretariat distributed 2,650 conventional tags, primarily under the tagging projects of the Atlantic Wide Research Programme for Bluefin Tuna (ICCAT GBYP) and to various scientific institutions (**Table 8**).

1.3.3 Tagging lottery

National laboratories award prizes or special gifts to people who recover tags aiming to encourage the return of recovered tags. In support of the tagging programmes, ICCAT organizes, on a yearly basis, a conventional tagging lottery carrying a prize money of \$ 500 US dollars. In the last ICCAT lottery held on 30 September 2019, prizes were awarded for three tags for each of the following categories: small tunas, sharks, billfishes, and temperate tunas. The winning tags per category were as follows:

Category	Tag winner	Species	Release INFO	Recovery INFO
Small tunas	ATP125360	Little tunny (<i>Euthynnus alletteratus</i> , LTA)	Côte d'Ivoire tagging campaigns	Côte d'Ivoire citizen
Sharks	45513	Shortfin mako shark (<i>Prionace glauca</i> , BSH)	Ireland tagging campaigns	Portuguese citizen
Billfishes	321975	Swordfish (<i>Xiphias gladius</i> , SWO)	United States tagging campaigns	Spanish citizen
Temperate tunas	AAB002286	Albacore (<i>Thunnus alalunga</i> , ALB)	Spanish tagging campaigns.	Spanish citizen

An additional draw took place supported by the Atlantic-Wide Research Programme for Bluefin Tuna (ICCAT GBYP). This draw carries three prizes, one for €1,000 and two for €500 for recoveries of bluefin tuna tags (*Thunnus thynnus*, BFT) only. The winning tags and their rewards were as follows:

- €1,000: tag BYP014778 (from Spanish campaigns), recovered by a Spanish citizen.
- €500: tag BYP000403, recovered by a Spanish citizen.
- €500: tag BF454843, recovered by a Maltese citizen.

A second additional draw took place supported by the Atlantic Ocean Tropical Tuna Tagging Programme (ICCAT AOTTP). The draw carried a cash prize of €500 for each of the three main tropical species. The winning tags and their rewards were as follows:

Tag winner	Species	Release INFO	Recovery INFO
ATP156450	Bigeye (<i>Thunnus obesus</i> , BET)	Spanish tagging campaigns	Spanish citizen
ATP160662	Skipjack (<i>Katsuwonus pelamis</i> , SKJ)	Portuguese (Madeira) tagging campaigns	Portuguese citizen
ATP123711	Yellowfin (<i>Thunnus albacares</i> , YFT)	Côte d'Ivoire tagging campaigns	Côte d'Ivoire citizen

1.4 By-catch

The ST09 form was modified again in 2020 to include some of the detail stripped from the 2018 version of the form. In addition to observer data themselves, the form now includes information that was formerly reported on the ST11 form about each CPCs observer program design. The cumulative information on CPCs observer program design is included in **Appendix 3**. CPC that reported ST09 data are listed in **Appendix 4**. Note that because the delivery date for the Secretariat's report on statistics was pushed back one month, CPCs have not yet had time to respond with revisions to their data; accordingly, the data are incomplete, including which CPCs reported. The Secretariat reporting summary will be updated later for the Commission.

In addition, the ST09 updated form included an optional form C that compiles some of this detailed information as optional; at the request of the SCRS, the Secretariat summarized the data submitted on which CPCs provided this information and or about their rationale for not providing it (refer to **Appendix 5**).

Table 9 provides a summary of ST09-DomObPrg data reported for the 2019 by discard fate and species group including sharks, sea turtles and seabirds. **Table 10** contains T1NC data for by-catch species for 2019.

1.4.1 Sharks

Shark data was submitted through ST09 forms and through Task 1. These data are summarized in **Tables 9** and **10**, respectively.

1.4.2 Sea Turtles

A summary of sea turtles information submitted for 2019 in ST09 forms is provided in **Table 11**. The Secretariat received much of the b-catch information from submitted ST09-DomObPrg forms.

1.4.3 Seabirds

A summary of the information submitted on ST09 forms for seabirds is provided in **Table 12**.

2. Data recovery and improvement

2.1 Revisions and updates

By default, historical revisions cover the years not covered by the SCRS "3 +1 revision rule", where the last three years already reported officially to ICCAT plus the new year, are considered preliminary data and can be freely revised by CPCs. For 2019 data, all years before 2016 require a scientific document explaining the revision.

Several CPCs have submitted historical revisions to T1NC for tuna and tuna-like species, sharks and other by-catch species. Part of those revisions (Mediterranean swordfish and major sharks) were made during the 2020 ICCAT intersessional data preparatory meetings. Some gaps were also completed and a few series with unclassified gears were also discriminated. Many CPC scientists were involved with the Secretariat in these revisions. This joint effort has greatly contributed to the T1NC improvements of these species, and, this type of joint work should be recommended to the other ICCAT species groups. All the T1NC updates are summarised in **Table 13**, which contains all the revisions with the supported SCRS documents and already adopted by the respective species groups.

There are however, some official T1NC datasets (**Table 14**) reported for years before 2014, without a scientific document. These series would require SCRS approval.

No major historical revisions were made to T2CE. **Table 16** presents the historical T2CE datasets reported and adopted by the respective species groups (already integrated into the ICCAT-DB).

The Secretariat has also received some historical revisions for T2SZ. **Table 17** presents the historical T2SZ datasets reported and adopted by the respective species groups (already integrated into the ICCAT-DB).

2.2 Additional by-catch information

The seabird mitigation measures, compiled in the past using forms CP44 and ST011, are now integrated in the new ST09 form. The use of seabird mitigation measures was reported by 12 CPCs on ST09 forms. In addition, three CPCs reported their seabird mitigation measures on CP44 forms.

3. ICCAT databases

The ICCAT database information system (ICCAT-DB) is a relational database management system (RDBMS servers: MS-SQL 2016 as the main server & MariaDB 10.3 for various purposes) with about 40 databases built to manage all the structured information received by the Secretariat. It has various frontend/backend tools including, client applications developed mostly with Java technologies, SQL scripts, and, some VBA tools. These tools are used to interact with the information (validation, transformation, processing, statistical analysis, data mining, standard outputs, etc.) and for data dissemination (web, ICCAT publications, meetings data provision, etc.).

In addition to the statistical and scientific information managed, ICCAT-DB system also manages a large portion of the information associated with the Commission's compliance requirements. Since 2009, the workload of compliance-related information, mainly in response to the increase of regulatory measures has steadily increased the database management and related tasks (control, verification, storage and backup).

The Secretariat started in May 2019 the development of the ICCAT Integrated Online Management System (IOMS), a system designed to manage online all the ICCAT data requirements in the future. It is a long-term project intended to entirely replace the current ICCAT data reporting system. Two new senior software developer experts, Jose Sanz (front-end developer) and Manuel Maestre (back-end developer), hired for one year in 2019, were incorporated into ICCAT Secretariat staff in 2020 to continue the phase 2 IOMS implementation, with the supervision and partial contribution to the development made by the Secretariat. The ICCAT Online Reporting Technology Working Group (WG-TOR), whose mandate was established under Resolution 16-19, and extended through Recommendation 19-12, will govern all the IOMS implementation process.

In 2020 the Secretariat refined the databases to store information related to tropical support vessels, FAD deployments, and port sampling for tropical tunas, reported using forms ST07, ST08 and ST09, respectively. It has underway the redesign of four additional databases (Task 1, Task 2, Vessels, and, Tagging) aimed to be integrated into the IOMS project. The full ICCAT-DB documentation, composed of several parts (database reference manuals, user guides, "javadoc" for JAVA tools documentation, special articles, etc.) has been undergoing a merging process with the documentation related to IOMS implementation (IOMS embedded event driven "help", REST API and other web-services, articles for cloud deployments, constant development/integration [CD/CI] practices, etc.). Both will share the same databases, which will allow the elimination of redundant documentation. This ongoing work is being continuously merged and updated in parallel with the improvements made to the ICCAT-DB and the progress of the IOMS.

As in the most recent years, the exceptional circumstances in 2020 obliged the Secretariat to delay or postpone several projects. The most important ones were: the replacement of the stand-alone MS-ACCESS databases with Task 2 data (T2CE: "t2ce.mdb", T2SZ/CS: "t2sz.mdb") by the SQLite; the "ICCAT forms" online Task 1/2 validation prototype; delay of the GIS project (aimed at geo-referencing all the ICCAT datasets, and to create a "marine-rich" PostGIS server); delay of the conventional/electronic tagging work (database redesign, automatic data integration tools, sex recoveries by individuals, etc.).

3.1 Statistics

3.1.1 Task 1 and Task 2

All the electronic forms used to collect Task 1 and Task 2 data (ST01-T1FC, ST01-T1NC, ST03-T2CE, ST04-T2SZ, ST05-CAS and ST06-T2FM) were updated to version "2020a" to incorporate the required changes of the SCRS (codes, structures, filtering criteria, etc.). The respective databases were updated accordingly. The Secretariat completed the automatic data integration of the information received in forms

ST07, ST08, ST09 and ST10 forms, and, also improved the automation processes to handle Task 1 and Task 2 forms. The Secretariat has plans to also develop automatic data integration for the conventional tagging forms TG01 and TG02. Extension of this automatic integration framework for all the “ST” and “TG” forms will occur progressively (2021 and beyond) due to its complexity.

3.1.2 Catch distribution (CATDIS)

The CATDIS update, covering the period 1950 to 2018, was postponed to October due to the lack of time. This will also delay the ICCAT annual Statistical Bulletin, which will be completed by the end of October. It will not include the estimations of four additional species: spearfish (SPF), blue shark (BSH), shortfin mako (SMA) and porbeagle (POR), due to the lack of sufficient information in T2CE for these species (**Appendix 1**).

3.1.3 Catch at size/Catch at age

The catch-at-size (CAS) database is complete and functional, with an active connection between the size data and the substitution tables used for the CAS estimation. This year, the Secretariat has completed a full revision of Mediterranean swordfish (period 1972-2018) and a partial update to the bluefin tuna (Eastern/Western stocks) adding the period 2015-2018.

3.1.4 FAD forms

In 2014, an electronic form (ST08-FadsDep) was created to collect information on the number of FADs deployed according to Rec. 13-01. This form has been revised several times and in 2018 the SCRS approved a new version addressing the main concerns raised by CPCs. In addition to the information provided on the ST08 forms, CPCs are also requested to submit FAD Management Plans according to paragraph 18 of [Rec. 16-01](#) and [Rec. 19-02](#). Countries fishing for tropical tunas that have submitted information about their FAD fisheries and their FAD Management Plans, as well the ST08-FADsDep data in 2020 is summarized in **Appendix 2**.

3.2 Compliance

In recent years, several compliance-related measures adopted by the Commission include several reporting requirements of various kinds on Contracting Parties. The Secretariat maintains databases for these sets of information separately from the traditional fishery statistics (Tasks I and II). Since 2011, following the Commission’s adoption of the Confidentiality Data Policy, the Secretariat has provided compliance-related information to the SCRS to fill gaps, complement or cross-check fishery statistics. This section of the report includes the available data that has been summarized for the SCRS in 2020.

3.2.1 ICCAT Vessel record

The Secretariat maintains the ICCAT Record of Vessels database in accordance with Recs. 13-13/14-10, 16-05, 16-06, 16-07, 16-15, 17-02, 17-03, 19-02 and 19-04). The Record comprises a total of 11 vessel lists. Since 2015, the ICCAT vessel record database is synchronised daily with the t-RFMOs Consolidated List of Authorized Vessels (CLAV) and the electronic Bluefin Catch Documentation Program (e-BCD). In coordination with CPCs, the Secretariat also carries out continuous revision and updates of the ICCAT vessel record database, covering also the elimination of vessel duplicates. The Secretariat is currently working on an online module for reporting this information (see sections 3 and 11 of this report).

3.2.2 Bluefin tuna fisheries

Recommendation 19-04 establish several reporting requirements for CPCs fishing and / or farming bluefin tuna:

- List of vessels authorized to catch eastern bluefin (Paras. 49 and 51 of Rec. 19-04)
- List of other bluefin tuna vessels authorized to operate in the eastern bluefin tuna fishery (Para. 49 and 51 of Rec. 19-04)
- Record of Joint Fishing Operations (Paras 56-60 of Rec. 19-04)
- Detailed information on bluefin tuna catches in the eastern Atlantic and Mediterranean in the preceding fishing year (Para. 57 of Rec. 19-04)
- Weekly eastern bluefin tuna catch reports by vessel and traps (Para. 74 of Rec. 19-04)
- Monthly western bluefin tuna catch reports (Para 24 of Rec. 17-06)
- VMS messages (Para. 5 of Rec. 07-08 and Para. 105 of Rec. 19-04)
- List of bluefin tuna traps (Paras 55-56 of Rec. 19-04)
- Bluefin tuna farming facilities (Para. 9b) of Rec. 06-07)
- Bluefin tuna farming reports (Para. 5 of Rec. 06-07)
- The use of stereoscopic cameras systems in the context of caging operations (Para. 99 and Annex 9, Rec. 19-04)
- Carry over of caged bluefin tuna (Para. 7 of Rec. 18-13)
- Bluefin tuna caging declarations (Para. 2b of Rec. 06-07 and Para. 102 of Rec. 19-04)
- List of ports in which vessels are authorized to land and/or tranship eastern bluefin tuna (Para. 69 and 70 of Rec. 19-04)
- Data and information collected under each CPCs domestic observer programme (Para. 83 of Rec. 19-04)

3.2.3 VMS messages

The VMS information received under Rec. 19-04 consists of vessel ID (name, flag, radio call sign) and a position every hour. This information can, in theory, be used to infer fishing effort distribution and intensity. **Figure 2** shows the number of messages received in 1° by 1° degree squares from 1 October 2019 to 5 October 2020 (reporting period). The plot represents only the Mediterranean Sea VMS messages that were originated at sea.

3.2.4 Bluefin Catch Document (BCD) and electronic BCD

In compliance with Rec. 18-13, the Secretariat receives paper copies of bluefin tuna catch documents and re-export certificates that are intended to track bluefin tuna from the catch location to the market. Very few paper copies are received now, as the use of the electronic system (eBCD system) become mandatory on 1 May 2016. Since 2016 the Secretariat had continued to work with the eBCD Technical Working Group on further developments and support for the eBCD system. **Table 18** summarizes the BCD / eBCD catches (weight and number) currently available as of 5 October 2020.

3.2.5 Bluefin catch reports

Under Recs. 17-06 and 19-04, bluefin catch reports are sent to the Secretariat. **Table 19** and **Table 20** summarize the information available from the monthly (West) and weekly (East) catch reports (as of 5 October 2020), respectively.

3.2.6 Caging declarations

Caging declarations are submitted by farming Contracting Parties in compliance with Recs. 18-02 and 19-04. The caged amounts reported by different fleets and introduced into cages are shown in **Table 21**. The data shown represents data submitted up to 5 October 2020. Recommendation 18-13 also requires CPCs to submit the amounts remaining in cages from the previous year, and Recommendation 06-07 requires a summary report of amounts farmed, as well as quantities marketed, mortalities and estimated growth.

3.2.7 *Statistical Document Programme*

Recs. 01-21 and 01-22 track international trade of certain types of fish products of bigeye and swordfish, under the ICCAT statistical document programme. **Table 22** summarises the number of biannual reports (SD: statistical documents; RC: re-export certificates) received from ICCAT CPCs during the reporting period. **Table 23** and **Table 24** compare (swordfish and bigeye, respectively) for the period 2012 to 2020 (2020 only first semester) current Task 1 nominal catch against trade statistics (SDs and RCs, in product weight) received during the reporting period.

3.2.8 *Transshipments*

Rec. 16-15 established a programme to monitor at-sea transshipments by large-scale longliners. The amounts transhipped are reported in **Table 25**. Note that, there are many product types for which there are no conversion factors to a common weight unit.

3.2.9 *Bluefin Tuna Regional Observer Programme (ROP-BFT)*

The data sets from this programme have been made available by the implementing consortium to the Bluefin Tuna Species Group. Given the complexity of the data base, such data sets are provided on request.

3.2.10 *Bluefin Tuna Farming Operations*

In 2017 the Secretariat presented an updated review of the size at harvest of bluefin from farming operations (Ortiz 2017³). This information was used in the 2017 Bluefin Stock Assessment. A new database integrating farming size at caging and harvesting operations and auxiliary information has been developed with the collaboration of the GBYP to address research on bluefin tuna growth during caging.

3.3 *FAD management plans*

The *Recommendation by ICCAT on a Multi-Annual Conservation and Management Programme for Tropical Tunas* (Recs. 19-02, 16 -01) states that each year by 31 January, CPCs with purse seine and baitboat vessels fishing for bigeye, yellowfin and skipjack tunas in association with objects that could affect fish aggregation, including FADs, shall submit Management Plans to the Executive Secretary for the use of such aggregating devices by vessels flying their flag. The elaboration of the plan in Annex 6 provides an extensive list of criteria that must be included in the Plan.

In 2020, ST08-FadsDep forms were received from 10 CPCs. Of these, three reported not using or deploying FADs. Data reported for the remaining CPCs are summarized in **Appendix 2**. Some of the requirements for the Plan are covered by the FAD data collection forms (ST08-FAD).

4. **Work in support of the SCRS Intersessional Meetings**

The main task of the Secretariat is to provide full support for all intersessional and annual meetings of the SCRS, including provision of the fisheries statistic data (Task 1, 2, tagging) and auxiliary data as requested by the Working Groups. The Secretariat also provides scientific support in collaboration with scientists and modelers for all the assessment methods, normally following an intersessional work plan approved by the Sub-Committees, Species Groups and/or Working Groups. During the meetings the Secretariat also collaborates with the compilation and integration of results, creating Status and Kobe plots, projections, auxiliary analysis and the backup of all analyses and main results in support of the management advice provided by the SCRS. Finally, in collaboration with Rapporteurs, the Secretariat provides support for research work plans, Call for tenders and other activities with the aim of making the best use of the available funds for science and data collection.

During 2020 the Secretariat provided support to the following SCRS meetings:

³ Ortiz M. 2017. Update review of bluefin tuna (*Thunnus thynnus*) size and weight measures taken with stereo video cameras at caging operations in the Mediterranean Sea 2015. ICCAT Coll. Vol. Sci. Pap. 73(7): 2289-2298.

- SCRS Process and Protocol meeting
 - The meeting was held in Madrid, Spain, 20-22 February 2020
- Intersessional Meeting of the Bluefin MSE Technical Group
 - The meeting was held in Madrid, Spain, 24-28 February 2020
- Intersessional Meeting of the Swordfish Species Group
 - The meeting was held online, 16-19 March 2020
- Intersessional Meeting of the Sub-Committee on Ecosystems
 - The meeting was held online, 4-6 May 2020
- Meeting of the Working Group on Stock Assessment Methods
 - The meeting was held online, 7-8 May 2020
- Intersessional Meeting of the Bluefin Tuna Species Group
 - The meeting was held online, 14-22 May 2020
- Mediterranean Swordfish Stock Assessment Meeting
 - The meeting was held online, 25 May- 2 June 2020
- Bluefin tuna Sub-group on Growth in Farms Meeting
 - The meeting was held online, 3 June 2020
- Swordfish MSE technical Group Meeting
 - The meeting was held online, 4-5 June 2020
- Porbeagle Stock Assessment Meeting
 - The meeting was held online, 15-22 June 2020
- Atlantic Albacore Stock Assessment Meeting
 - The meeting was held online, 29 June-8 July 2020
- Billfishes, Small tunas and Tropical Tuna Species Group meetings
 - The meetings were held online, 15-17 July 2020
- Intersessional Meeting of the Bluefin Tuna Species Group
 - The meeting was held online, 20-28 July 2020
- Swordfish, Sharks, Albacore, Bluefin Tuna and Tropical Tuna Species Group meetings
 - The meetings were held online, 31 August-9 September 2020

5. Infrastructure and technology

Described below are the most significant improvements made to the Secretariat's IT department.

5.1 Purchase of 3 new HP servers

Three new HP servers were purchased to replace the current ones, in addition to two HP switches to connect the new servers to one another and to shared storage. We also have a new storage cabinet provided by the supplier free of charge.

5.2 Use of the Palo Alto 820 firewall VPN during the COVID-19 pandemic

The Secretariat office's Palo Alto 820 VPN service was used to allow staff to work remotely during the COVID-19 lockdown. Remote support was given to staff as required.

5.3 Endpoint security software subscription replacement

The Endpoint security software has been replaced with a Sophos solution for Symnatec user computers and servers.

5.4 Backup service with disaster recovery for virtual servers and user computers

Work has continued on the virtual machine backup service to guarantee continuity in the event of a physical disaster at the Secretariat facilities.

Backups of user computers continue to be made in order to allow them to keep working with the same data and/or complete system, as required, in the event that the computer is damaged.

5.5 Possibility of buying a Zoom license for online meetings

The possibility of buying a Zoom license has been studied in the event that it is needed for online meetings. It allows for simultaneous interpreting. A specialised online events company has been located to manage online meetings on Zoom or its own application with simultaneous interpreting.

5.6 IP thermometer for the DPC

An IP thermometer has been purchased to monitor the temperature of the server room.

5.7 Purchase of server and computer management software

Manage Engine's Desktop Control software program has been purchased to manage servers and user computers, improving security.

5.8 Purchase of DPC IT asset management software

Manage Engine's oPManager software program has been purchased to monitor over 50 servers/switches/firewalls, etc.

5.9 Cybersecurity and regulatory compliance consultation services

We have been looking for an external company to help us fulfill the Spanish Data Protection Act and create Security Policies, in line with ISO 27001, which includes security regulations related to teleworking. It is based on a preliminary audit and a vulnerability analysis, in addition to penetration testing. It is based on an analysis of the risks to be covered by the Secretariat.

5.10 Passwordless access solution

Work is currently being carried out on a passwordless access solution, which allows users to log in to their computer with a USB stick, as well as access Microsoft 365 (Office) software and the Palo Alto VPN to connect to our office. It is based on Yubkey by Yubico. It is a 2FA (Two-Factor Authentication) solution.

5.11 Additional email security layer

An email protection solution based on Fortimail and FortiSandbox, and managed by an SOC (Security Operations Center), has been acquired.

5.12 New computers for staff

Two new computers have been delivered —one desktop computer and one laptop — to ICCAT staff.

5.13 Work environment for person covering maternity leave

A remote work environment has been prepared for the person covering the maternity leave of a member of the ICCAT staff.

5.14 Fax virtualization

The ICCAT Secretariat's fax service has been virtualized.

6. Publications

6.1 ICCAT series of periodic publications

For the current year, the Secretariat has continued the series of periodic publications developed throughout the history of ICCAT. **Table 26** shows the volumes of these series that were published in 2020. Due to the request from the Commission to reduce costs, all the ICCAT periodic publications are only published in electronic format and are all available for download on the ICCAT publications webpage.

Volume 4 of the Biennial Report was published for the first time in 2011. This Volume contains the reports generated by the Secretariat for the SCRS and the Commission, such as the Secretariat Report on Statistics and Coordination of Research, the Financial and Administrative Reports, and the ICCAT Secretariat Reports to the Conservation and Management Measures Compliance Committee (COC) and the Permanent Working Group for the Improvement of ICCAT Statistics and Conservation Measures (PWG).

Volume 46 of the Statistical Bulletin will be published in October as an electronic version, providing the catches and other statistics series for the period 1950 to 2018.

Given the Secretariat's workload and the request to reduce the time of publication of the ICCAT Collective Volume of Scientific Papers, and considering that a significant number of authors do not follow the publication guidelines provided, the SCRS agreed in 2014 that those papers not meeting the minimum standards would not be published. As a result of applying this practice since 2017, the list of unpublished papers in the volume includes those withdrawn by the authors and those which failed to meet the minimum established publication standards. The Secretariat also adopted the necessary measures in 2017 to ensure that documents be published in electronic format soon after Sub-committees and Species Groups and Working Group meetings. As a result of improvements imposed in the publication process, throughout 2020 the Secretariat completed publishing of volume 76 (completed issues 7 to 11) and already published issues 1 to 5 of volume 77 of the ICCAT Collective Volume of Scientific Papers.

6.2 ICCAT- Aquatic Living Resources (ALR) Agreement

In 2007, ICCAT signed an agreement with ALR, with the aim of providing wider dissemination of the work of the SCRS within the scientific community. This agreement meant the development of a thematic section on tunas in the journal, to include documents presented to the SCRS and selected by the SCRS to be inserted in this section. Since that date, six volumes of the journal have been published with this section and a total of 24 ICCAT documents. However, in 2014 ALR changed its editorial line towards an ecosystem approach of fisheries management, which considerably reduces the possibilities of publishing the documents presented to the SCRS.

In 2015, the former ALR editor, Dr Brigitte Milcendon, informed the Secretariat that ALR would continue as a peer-reviewed journal, with a new editing team and without the participation of IFREMER in the publication. Dr. Milcendon also expressed the new team's will to maintain the agreement with ICCAT. The field of interest of the journal in its new phase will continue to have an ecosystem approach, but with a broader outlook than in its last phase, which will open the publication up to a larger number of SCRS documents. In 2016 the Secretariat contacted the new ALR editorial team, which reiterated their willingness to enhance the collaboration with ICCAT and requested greater involvement of the SCRS in the process of selection, review and publication of the documents through an Editorial Committee. On the other hand, ALR expressed their willingness to publish a few more ICCAT papers (12-15) on an annual basis. However, in 2016 only 2 papers were selected by the Sub-committees Conveners and Species Group Rapporteurs as of potential interest for publication in the ALR. In 2017 and 2018 no papers were selected. Based on this fact, which precludes ALR having an annual ICCAT issue, the Secretariat and the SCRS Chair presented in 2018 an alternative option, according to which the Sub-Committee's conveners and the Species/Working Group Rapporteurs should identify a specific paper in their workplan for 2020 that will be put forward for publication in the primary literature. This issue was discussed in the 2020 SCRS Process and Protocol meeting, which reiterated the value of having each SCRS Species Group Chair identify 1-2 papers in their work plans for submission to the peer-reviewed journal during the following year. A proposal was made to engage scientists from developing CPCs in the drafting of such papers.

6.3 ICCAT Manual

In 2019 and 2020, a request has been made regarding the Manual. The Small Tuna Species Group recommended extending the species description chapter(s) of the ICCAT Manual for other small tuna species, including wahoo (*Acanthocybium solandri*), serra Spanish mackerel (*Scomberomorus brasiliensis*), West African Spanish mackerel (*Scomberomorus tritor*), dolphinfish (*Coryphaena hippurus*), plain bonito (BOP, *Orcynopsis unicolor*) and cero mackerel (CER, *Scomberomorus regalis*), and update all other species chapters, which were last updated in 2006, except for *Thunnus atlanticus*, which was updated in 2013. The Secretariat will launch a Call for Tenders during the 4th quarter of 2020 regarding the signing of a short-term contract with an expert to proceed with the update of the ICCAT Manual.

6.4 ICCAT web site

The ICCAT web site, in the three official languages of the Commission, continues to be updated on a regular basis to provide better service to users.

The development of the web page and search engine for MSE documents has been completed. Likewise, improvements have been made to the structure, databases, documents and pages with the aim of improving browsing and results in the global search engine, which will be made available on our web site as soon as possible.

We continue to adapt the web site to new navigator functionalities.

7. International activities

7.1 Coordinating Working Group on Fishery Statistics (CWP)

No meetings were scheduled by FAO-CWP technical workshop on global harmonization of tuna fisheries statistics in 2020. However, the Secretariat has maintained close collaboration with FAO-CWP and FAO-FIRMS experts at the technical level on the solution of various data issues (data corrections, coding systems, application of CWP fisheries harmonization standards and concepts, data exchange, etc.). The ICCAT Secretariat also has activities under way for the accomplishment of the data provision for the FAO-FIRMS Global Tuna Atlas as described in the FAO FIRMS Steering Committee eleventh session report (FS11, May 2019 Rome-Italy: <http://www.fao.org/3/ca5247en/ca5247en.pdf>). These activities will continue until the public dissemination of the FAO Global Tuna Atlas, planned for October 2020.

7.2 Fisheries and Resources Monitoring System (FIRMS)

ICCAT is partner of the FAO/FIRMS that provides access to information on the global monitoring and management of fishery marine resources. As such the Secretariat provides regular updates for the stock status of ICCAT species (<http://firms.fao.org/firms/en>) assessed by the SCRS. In early 2020, the Secretariat updated the species identification sheets for white marlin and yellowfin tuna which were assessed by the SCRS in 2019.

7.3 ASFA

The Secretariat has prepared a few new entries for the Aquatic Sciences and Fisheries Abstracts (ASFA-ProQuest) database of the papers published in the most recent issues of the ICCAT Collective Volume of Scientific Papers.

7.4 EU Regional Coordination Group Large Pelagics (RCG LP)

The ICCAT Secretariat has participated in the European Union (EU) Regional Coordination Group on Large Pelagics (RCG LP) Annual Meeting, held online (25-26 June, 2020), as one of the potential beneficiaries of the outcomes planned by the RCG-LP on the provision by EU Member States of fisheries and biological data, through the EU data collection framework (DCF). The Secretariat considers that the DCF system has the potential to be used in ICCAT by EU Member States to fulfil their data obligations. The Secretariat presented to the Group the various aspects of the ICCAT data collection system, namely the data call process, the types

of fisheries and biological data and respective formats, and the submission and the validation process using some of the SCRS instruments recently developed (filtering criteria, report cards, catalogues, and scorecard), among others. Special attention was given to the way the data transmission failures are handled by the EU and ICCAT in relation to EU Member State data provision. The Group recognised that the existing practice of sending a yearly report to the EU (DG-MARE) (prepared by the ICCAT Secretariat around October) on the “EU reporting status” is a good instrument used to track with some level of detail the data provision failures of EU Member States. The Secretariat noted that the report still has potential for improvements in the future.

7.5 Cooperation agreement with SEAFO

In 2019 a draft MoU was submitted for the consideration of the Commission. Based on the 2019 Commission adoption of the text, in August 2020 a MoU was signed between the two Secretariats.

8. ICCAT Scientific programmes

The activities of the Atlantic-Wide Bluefin Research Programme (ICCAT GBYP), Atlantic Ocean Tropical tuna Tagging Programme (ICCAT AOTTP), Year Research Programme for Small Tunas (ICCAT SMTYP), the Shark Research and Data Collection Programme (SRDCP), and the Enhanced Research Programme for Billfish (ICCAT ERPB), are separately presented in reports to the SCRS (see Appendices 3, 4, 5, 6 and 7, respectively). The Secretariat’s participation in these programmes mainly consists in administrative and scientific support. In the administrative area the Secretariat aids with the coordination of proposal research, Call for tenders/Quotation request, and funds administration, and oversees the auditory and accounting responsibilities of these programmes. Regarding scientific support, the Secretariat plays a major role between the SCRS and the programme coordinator in the design of research proposals, Call for tenders, evaluation of proposals, coordination of research and database management, as well as IT support to each of the programmes. As in the past, during 2020 the Secretariat actively participated in several of the research programmes components.

In addition to the above mentioned programmes, the Secretariat has been providing administrative and scientific support to other research activities (see item 6.6), namely regarding the ongoing work of the Sub-Committee on Ecosystems, swordfish and albacore Species Groups, as well as, the Working Group on Stock Assessment Methods. Such support involved coordination of research of proposals, Call for tenders, administration of allocated funds and accounting responsibilities of the different contracts issued.

9. Other activities

9.1 T-RMFO Bycatch Working Group Sharks Meeting

The Secretariat organized a meeting of the tRMFO Bycatch Working Group on sharks. This was the first meeting of the tRMFO Bycatch Working Group dedicated to sharks. The meeting was convened to promote discussions on the assessment and management of elasmobranchs across the globe. It was held on 16–18 December 2019 in Porto Portugal. The [meeting report](#) is published on the ICCAT webpage.

9.2 International Whale Commission (IWC)

The Bycatch Coordinator was invited to review an IWC report entitled “A Review of Regional Fishery Management Organization Efforts in Addressing Cetacean Bycatch”. The absence of any ICCAT recommendation on cetaceans was identified as an important shortcoming affecting ICCAT’s low overall ranking in the IWC’s report. The Secretariat and the SCRS coordinated to draft a response, noting some errors in the arguments and facts of the IWC’s report. The Bycatch Coordinator attended the IWC Scientific Committee’s Bycatch Working Group meeting, held 12-24 May online, and discussed the report. A revised version of the IWC’s report largely reflected the revisions sent by ICCAT. It was clear that the IWC wishes to engage with ICCAT to develop measures to quantify and mitigate marine mammal bycatch in ICCAT fisheries.

9.3 *The Western Pacific Fisheries Management Council's International Workshop on Area-Based Management of Blue Water Fisheries*

The Bycatch Coordinator was invited to participate in this meeting, held from 15-17 June 2020. The objectives of the meeting were to: review and define objectives and performance metrics for area-based management in blue water ecosystems; examine spatial management measure designs for blue water fisheries; review evidence of ecological objectives met by spatial management measures for pelagic marine fisheries; define research needs for area-based management in pelagic fisheries; review methods to evaluate and monitor area-based management measures; and carry out a social impact assessment of area-based management measures. The participants are drafting a primary paper summarizing their findings, which they plan to submit for publication in September 2020.

9.4 *Fish and Ships*

This workshop was jointly organised by Stanford University and the Virginia Polytechnic Institute and State University. The objective of the workshop was to better understand the challenges and benefits of combining pelagic fish electronic tagging data with vessel tracking datasets. The ICCAT Secretariat participated in the Atlantic online meeting from 30-31 July 2020 (separate sessions were held for Pacific CPCs and RMFOs). The Secretariat provided information on which datasets it held of electronic tagging and vessel tracking information. The workshop identified technical issues associated with using electronic tagging datasets and remotely sensed fisheries information together, with the aim of collaboratively synthesizing these datasets in the future. It is anticipated that future workshops will follow as collaborations develop regionally. A report of the meeting's proceedings will be published once it is available.

9.5 *Mediterranean Advisory Council (MEDAC)*

The Mediterranean Advisory Council's (MEDAC) role includes the preparation of opinions on fisheries management and socio-economic aspects in support of the fisheries sector in the Mediterranean, to be submitted to the European Member States and institutions in order to facilitate the achievement of the objectives of the European Union Common Fisheries Policy. The ICCAT Secretariat receives an annual invitation to attend one of their meetings and to provide a presentation on the recent findings of the SCRS as regards the status of the stocks of eastern Atlantic and Mediterranean bluefin tuna, as well as for the Mediterranean albacore and swordfish stocks. The Secretariat provided a presentation to the MEDAC on 29 September, of the 2020 SCRS work and advice to the Commission regarding these two stocks.

10. *ICCAT funds for data improvement and capacity building*

To improve data collection and strengthen the capacity of the scientists from developing Parties, the Japanese Government created an initial data improvement project, which was continued in a second phase by the ICCAT/Japan Data and Management Improvement Project (JDMIP), in a third phase by the ICCAT/Japan Capacity-Building Assistance Improvement Project (JCAP), and since December 2019 in a fourth phase by the ICCAT/Japan Capacity-Building Assistance Improvement Project (Phase 2) (JCAP-2) (the report is contained in document **SCI-09**).

Besides this project, there is also a Data Fund, which was established through the *Resolution by ICCAT on Improvements in Data Collection and Quality Assurance* [Res. 03-21]. The Data Fund is open to voluntary contributions from the Contracting Parties. To date, only the United States has contributed to this fund.

The European Union and the United States created their own capacity building funds for data collection and analysis of data and stock assessment methods, as well as to facilitate participation in SCRS meetings.

In 2014, the Commission adopted the *Recommendation by ICCAT amending Recommendation [11-26] on the Establishment of a Meeting Participation Fund for Developing Contracting Parties* [Rec. 14-14], for the participation in both the SCRS and Commission meetings.

In 2013, the Commission adopted the *Recommendation by ICCAT on the Establishment of a Scientific Capacity Building Fund for Developing States which are ICCAT Contracting Parties* [Rec. 13-19] which establishes a Special Capacity Building Fund (SCBF) to support scientists from ICCAT Contracting Parties that are developing States, regarding their need to acquire knowledge and develop capacities in ICCAT related issues.

In 2017 the Commission decided to keep this fund but no budget has been allocated to it since 2018, whereas it was also decided to move the respective balance as of 31 December 2017 to the Science Envelope budgetary line.

To support the SCRS work, at its 2019 meeting, the Commission approved a total amount of €150,000 for the 2020 Science Envelope. In addition, in 2020 the EU committed an additional contribution of €850,000 and the USA provided a total of €77,000 to the Enhanced Programme for Billfish Research Data Fund.

In 2012, the SCRS approved a protocol to use the Data Fund and other ICCAT funds. This protocol defines a broad structure for use of the funds which includes improvement of statistics, training and support of SCRS work, including attendance to meetings. The protocol also includes the criteria to be followed for allocation of funds.

On the basis of this protocol, in 2020 the funds have been used as follows:

- Participation at SCRS meetings: arrangements were made for 5 scientists from Algeria, Brazil, Mauritania, Namibia and Tunisia to attend the swordfish Species Group meeting, which was subsequently canceled and held online.
- Improvement of statistics: A training course has been planned on building the capacity of data collection in industrial tropical tuna fisheries in Gabon (date to be confirmed) and rebuilding the statistical and fisheries data collection system in Liberia, financially supported by the ICCAT - Japan Capacity-Building Assistance Project (JCAP-2).
- SCRS activities funded the following:
 - Short-term contract for collection of biological samples for growth study on billfish in the eastern Atlantic;
 - Short-term contract for collection of biological samples for studies on genetics, growth and maturity - SMTYP;
 - Short-term contract for ICCAT swordfish biological samples collection for growth, reproduction and genetics studies;
 - Short-term contract for modelling approaches: support for the ICCAT North Atlantic swordfish from MSE process.
 - Short-term contract to improve the working framework for assessment of the North Atlantic albacore management strategy;
 - Electronic PSAT tagging of Atlantic swordfish, Atlantic albacore and Atlantic pelagic sharks;
 - Study on the genetic structure of the shortfin mako shark stock based on mitochondrial analysis;
 - Workshop on sampling and biology of ICCAT small tunas (funding for 12 participants).

11. Major statistical and IT Tasks planned for 2021

The Secretariat has been working since 2017 on the Integrated Online Managements System (ICCAT IOMS). This project started with two prototypes, the FORS (Fisheries online reporting system, financed by GEF) and the "ICCAT forms" (recommended by the SCRS and made by the Secretariat) aimed to validate online Task 1 and Task 2 forms. In 2018, the Sub-Committee on Statistics recommended (after evaluating the two web-applications presented) that both projects be merged. The SCRS and the Commission's Online Reporting Technical Working Group has supported and recommended to continue with this project, including its extension to all the compliance and statistical data submission requirements of ICCAT. The Commission also recognized that implementing the project ICCAT IOMS system does require a commitment for financial and expertise support for moving forward and completing it in a near future to fulfil the recommendations from the Online Reporting Technology Working Group. In 2019 the Commission

approved Phase 1 of the ICCAT IOMS project. The Secretariat started its development with the hire of two senior software developers in June 2019. The IOMS Phase 1 workplan and specifications are described in document COC_317_IOMS_Phase1_Proposal. The new IOMS development phases will be specified by the ICCAT WG-TOR. In 2020, due to the COVID 19 pandemic, the meetings of the IOMS Working Group were postponed. Nevertheless, the Secretariat has continued with the project development workplan and will report to the Working Group at the next meeting.

The following tasks represent continuous database improvements and maintenance that will continue during 2021 and beyond. The priority tasks (including the ones postponed in 2019/20) for 2021 include:

- Replace the stand-alone MS-ACCESS Task 2 databases on the web by SQLite equivalent ones.
- Improve the “client applications” that manage the databases of ICCAT-DB system.
- Continue the tagging database redesign, including the addition of the model structure for electronic tagging, TG forms standardization, and automatic data integration of TG forms.
- Continue the development of the GIS project (create a PostGIS server and geo-reference all the ICCAT data available in ICCAT-DB).
- The standardization of electronic forms of compliance and statistics for automatic data integration.
- The adaptation of all the databases of ICCAT-DB to the ICCAT IOMS system.

12. Secretariat staff and organization

In June 2020, Javier Martínez joined the Secretariat staff as a Full Stack Developer (eBCD). Detailed information on the structure and the Secretariat staff is available on the ICCAT web site (www.iccat.int/en/staff.html).

The Secretariat went into telework activities on 16 March, 2020 in response to the Spanish Government’s recommendations and mandates due to the COVID-19 pandemic state of alarm. Since then, the Secretariat has been following the health and work recommendations implemented by the national and regional authorities. However, all the activities of the Secretariat were maintained, including those related to the online meetings. The Secretariat thanks all CPCs’ authorities and scientists for their efforts and support during these difficult times and expresses their wishes for a healthy and prompt return to normal activities. Thanks are also due to the staff, for their commitment and ability to rapidly adjust to remote working, while maintaining the standards of the work.

Table 2. Task 1 nominal catch (form ST02-T1NC) submission status for 2019 data ("green": before deadline; "yellow": after deadline; "orange": has not passed Filter 1 (scenario 2); "blank": not submitted or zero catch).

Tableau 2. Situation de la soumission des données de la prise nominale de la Tâche 1 (formulaire ST02-T1NC) pour les données de 2019 (vert: déclarées dans le respect des délais impartis; jaune: déclarées après la date limite; "orange": n'a pas passé le Filtre 1 (scénario 2); cellule vide: non déclarées ou prises zéro).

Tabla 2. Estado de la presentación de los datos de captura nominal de Tarea 1 (formulario ST02-T1NC) para los datos de 2019 ("verde": dentro del plazo; "amarillo": fuera de plazo; "naranja": no pasó el Filtro 1 (escenario 2); "en blanco": no se han enviado datos o captura cero).

Status	Party	Flag	Deadline (+1 day tolerance): 2020-08-01															
			Tuna (major sp.)										Small tun		Sharks (major sp.)			
			ALB	BET	BFT	BUM	SAI	SKJ	SPF	SWO	WHM	YFT	STGrp	BSH	POR	SMA		
CP	ALBANIA	Albania	1	1	1	1	1	1	1	1	1	1	1	1	1	1	1	1
	ALGÉRIE	Algerie	1	1	1	1	1	1	1	1	1	1	1	1	1	1	1	1
	ANGOLA	Angola	-0.2	-0.2	-0.2	-0.2	-0.2	-0.2	-0.2	-0.2	-0.2	-0.2	-0.2	-0.2	-0.2	-0.2	-0.2	-0.2
	BARBADOS	Barbados	-0.2	-0.2	-0.2	-0.2	-0.2	-0.2	-0.2	-0.2	-0.2	-0.2	-0.2	-0.2	-0.2	-0.2	-0.2	-0.2
	BELIZE	Belize	-0.2	-0.2	-0.2	-0.2	-0.2	-0.2	-0.2	-0.2	-0.2	-0.2	-0.2	-0.2	-0.2	-0.2	-0.2	-0.2
	BRAZIL	Brazil	1	1	1	1	1	1	1	1	1	1	1	1	1	1	1	
	CANADA	Canada	1	1	1	1	1	1	1	1	1	1	1	1	1	1	1	
	CAP-VERT	Cape Verde	1	1	1	1	1	1	1	1	1	1	1	1	1	1	1	
	CHINA PR.	China PR	1	1	1	1	1	1	1	1	1	1	1	1	1	1	1	
	CÔTE D'IVOIRE	Côte d'Ivoire	-0.2	-0.2		-0.2	-0.2	-0.2		-0.2	-0.2	-0.2	-0.2	-0.2	-0.2	-0.2	-0.2	-0.2
	CURAÇAO	Curaçao	-0.2	-0.2	-0.2	-0.2	-0.2	-0.2	-0.2	-0.2	-0.2	-0.2	-0.2	-0.2	-0.2	-0.2	-0.2	-0.2
	EGYPT	Egypt	-0.2	-0.2	-0.2	-0.2	-0.2	-0.2	-0.2	-0.2	-0.2	-0.2	-0.2	-0.2	-0.2	-0.2	-0.2	-0.2
	EL SALVADOR	El Salvador	-0.2	-0.2	-0.2	-0.2	-0.2	-0.2	-0.2	-0.2	-0.2	-0.2	-0.2	-0.2	-0.2	-0.2	-0.2	-0.2
	EUROPEAN UNION	EU.Bulgaria	1	1	1	1	1	1	1	1	1	1	1	1	1	1	1	1
		EU.Croatia	1	1	1	1	1	1	1	1	1	1	1	1	1	1	1	1
		EU.Cyprus	1	1	1	1	1	1	1	1	1	1	1	1	1	1	1	1
		EU.Denmark	1	1	1	1	1	1	1	1	1	1	1	1	1	1	1	1
		EU.España	1	1	1	1	1	1	1	1	1	1	1	1	1	1	1	1
		EU.France	-0.2	-0.2	-0.2	-0.2	-0.2	-0.2	-0.2	-0.2	-0.2	-0.2	-0.2	-0.2	-0.2	-0.2	-0.2	-0.2
		EU.Germany																
		EU.Greece	1	1	1	1	1	1	1	1	1	1	1	1	1	1	1	1
		EU.Ireland	1	1	1	1	1	1	1	1	1	1	1	1	1	1	1	1
		EU.Italy	-0.2	-0.2	-0.2	-0.2	-0.2	-0.2	-0.2	-0.2	-0.2	-0.2	-0.2	-0.2	-0.2	-0.2	-0.2	-0.2
		EU.Latvia	0	0	0	0	0	0	0	0	0	0	0	0	0	0	0	0
		EU.Lithuania																
		EU.Malta	0	0	0	0	0	0	0	0	0	0	0	0	0	0	0	0
		EU.Netherlands	1	1	1	1	1	1	1	1	1	1	1	1	1	1	1	1
		EU.Portugal	1	1	1	1	1	1	1	1	1	1	1	1	1	1	1	1
		EU.United Kingdom	1	1	1	1	1	1	1	1	1	1	1	1	1	1	1	1
	FRANCE (St-Pierre et Miquelon)	FR.St Pierre et Miquelon																
	GABON	Gabon	0	0	0	0	0	0	0	0	0	0	0	0	0	0	0	0
	GAMBIA	Gambia																
	GHANA	Ghana	1	1	1	1	1	1	1	1	1	1	1	1	1	1	1	1
	GRENADA	Grenada																
	GUATEMALA	Guatemala	0	0	0	0	0	0	0	0	0	0	0	0	0	0	0	0
	GUINEA BISSAU	Guinea Bissau																
	GUINEA ECUATORIAL	Guinea Ecuatorial		0			0	0			0	0	0					
	GUINÉE REP.	Guinée Rep.																
	HONDURAS	Honduras																
	ICELAND	Iceland																
	JAPAN	Japan	1	1	1	1	1	1	1	1	1	1	1	1	1	1	1	1
	KOREA REP.	Korea Rep.	1	1	1	1	1	1	1	1	1	1	1	1	1	1	1	1
	LIBERIA	Liberia	0	0	0	0	0	0	0	0	0	0	0	0	0	0	0	0
	LIBYA	Libya	0	0	0	0	0	0	0	0	0	0	0	0	0	0	0	0
	MAROC	Maroc	1	0	0	0	0	0	0	0	1	0	0	0	0	1	0	0
	MAURITANIA	Mauritania	-0.2	-0.2	-0.2	-0.2	-0.2	-0.2	-0.2	-0.2	-0.2	-0.2	-0.2	-0.2	-0.2	-0.2	-0.2	-0.2
	MEXICO	Mexico	1	1	1	1	1	1	1	1	1	1	1	1	1	1	1	1
	NAMIBIA	Namibia	1	1		1		1		1		1		1		1		1
	NICARAGUA	Nicaragua																
	NIGERIA	Nigeria																
	NORWAY	Norway	1	1	1	1	1	1	1	1	1	1	1	1	1	1	1	1
	PANAMA	Panama	0	0	0	0	0	0	0	0	0	0	0	0	0	0	0	0
	PHILIPPINES	Philippines																
	RUSSIA	Russian Federation	0	0	0	0	0	1	0	0	0	0	0	1	1	1	1	1
	S. TOMÉ E PRINCIPE	S. Tomé e Príncipe	-0.2	-0.2	-0.2	-0.2	-0.2	-0.2	-0.2	-0.2	-0.2	-0.2	-0.2	-0.2	-0.2	-0.2	-0.2	-0.2
	SENEGAL	Senegal	0	0	0	0	0	0	0	0	0	0	0	0	0	0	0	0
	SIERRA LEONE	Sierra Leone																
	SOUTH AFRICA	South Africa	1	1	1	1	1	1	1	1	1	1	1	1	1	1	1	1
	St VINCENT & GRENADINES	St. Vincent and Grenadines	-0.2	-0.2	-0.2	-0.2	-0.2	-0.2	-0.2	-0.2	-0.2	-0.2	-0.2	-0.2	-0.2	-0.2	-0.2	-0.2
	SYRIA	Syria	1	1	1	1	1	1	1	1	1	1	1	1	1	1	1	1
	TRINIDAD & TOBAGO	Trinidad and Tobago	1	1	1	1	1	1	1	1	1	1	1	1	1	1	1	1
	TUNISIE	Tunisie	1	1	1	1	1	1	1	1	1	1	1	1	1	1	1	1
	TURKEY	Turkey	1	1	1	1	1	1	1	1	1	1	1	1	1	1	1	1
	UNITED KINGDOM (O.Territories)	UK.Bermuda	-0.2	-0.2	-0.2	-0.2	-0.2	-0.2	-0.2	-0.2	-0.2	-0.2	-0.2	-0.2	-0.2	-0.2	-0.2	-0.2
		UK.British Virgin Islands																
		UK.Sta Helena	1	1	1	1	1	1	1	1	1	1	1	1	1	1	1	1
		UK.Turks and Caicos																
	UNITED STATES	U.S.A.	1	1	1	1	1	1	1	1	1	1	1	1	1	1	1	1
	URUGUAY	Uruguay																
	VANUATU	Vanuatu																
	VENEZUELA	Venezuela	0	0	0	0	0	0	0	0	0	0	0	0	0	0	0	0
NCC	Bolivia	Bolivia																
	Chinese Taipei	Chinese Taipei	1	1	1	1	1	1	1	1	1	1	1	1	1	1	1	1
	Colombia	Colombia																
	Costa Rica	Costa Rica																
	Guyana	Guyana																
	Suriname	Suriname																
NCO	Non-contracting parties	Jamaica	-0.2	-0.2	-0.2	-0.2	-0.2	-0.2	-0.2	-0.2	-0.2	-0.2	-0.2	-0.2	-0.2	-0.2	-0.2	-0.2
		Sta. Lucia	-0.2	-0.2	-0.2	-0.2	-0.2	-0.2	-0.2	-0.2	-0.2	-0.2	-0.2	-0.2	-0.2	-0.2	-0.2	-0.2

NOTES: NO FISHING ACTIVITY (flags in green, 14 flags): EU.Germany, FR.St Pierre et Miquelon, Honduras, Iceland, Nicaragua, Nigeria, Sierra Leone, UK.British Virgin Islands, UK.Turks and Caicos, Uruguay, NO TARGETING ACTIVITIES (some by-catch): EU.Denmark, EU.Germany, EU.Netherlands, and, EU.United Kingdom. ERRORS/UNDER REVISION: Côte d'Ivoire, EU-France, EU-España, Ghana, Guatemala, Panama, etc.

Table 5. Consolidated view of the Report Cards for 2019 data (Tables 1 to 4, where at least one cell is not empty). The order of priority given to the colours on the consolidation was: orange/yellow/green.

Tableau 5. Vision consolidée des cartes de déclaration pour les données de 2019 (tableaux 1 à 4, où au moins une cellule n'est pas vide). L'ordre de priorité donné aux couleurs dans la consolidation est : orange/jaune/vert.

Tabla 5. Visión consolidada de los catálogos de comunicación para los datos de 2019 (Tablas 1 a 4, con al menos hay una celda no vacía). El orden de prioridad asignado a los colores en la consolidación es: naranja/amarillo/verde.

Status	Party	Flag	Task I		Task II	
			T1FC	T2NC	T2CE	T2SZ/CS
CP	ALBANIA	Albania	1	1	-0.2	
	ALGÉRIE	Algerie	1	1	-0.2	-0.2
	ANGOLA	Angola		-0.2		
	BARBADOS	Barbados	-0.2	-0.2	-0.2	-0.2
	BELIZE	Belize	1	-0.2		
	BRAZIL	Brazil	1	1	1	1
	CANADA	Canada	1	1	1	1
	CAP-VERT	Cape Verde	-0.2	1	1	-0.2
	CHINA PR.	China PR	1	1	1	1
	CÔTE D'IVOIRE	Côte d'Ivoire	1	-0.2	-0.2	
	CURAÇAO	Curaçao	-0.2	-0.2	1	1
	EGYPT	Egypt	-0.2	-0.2		
	EL SALVADOR	El Salvador	1	-0.2	1	1
	EUROPEAN UNION	EU.Bulgaria	1	1	1	
		EU.Croatia	1	1	1	1
		EU.Cyprus	1	1	1	1
		EU.Denmark		1		
		EU.España	-0.2	1	-0.2	0
		EU.France		-0.2	1	1
		EU.Germany				
		EU.Greece	1	1	1	1
		EU.Ireland	1	1		
		EU.Italy	1	-0.2	1	1
		EU.Latvia	0	0		
		EU.Lithuania				
		EU.Malta	1	0	0	1
		EU.Netherlands	-0.2	1		
		EU.Portugal	1	1	1	1
		EU.United Kingdom	1	1	1	
	FRANCE (St-Pierre et Miquelon)	FR.St Pierre et Miquelon				
	GABON	Gabon		0		
	GAMBIA	Gambia				
	GHANA	Ghana	1	1		
	GRENADA	Grenada				
	GUATEMALA	Guatemala	-0.2	0	0	0
	GUINEA BISSAU	Guinea Bissau				
	GUINEA ECUATORIAL	Guinea Ecuatorial		0		
	GUINÉE REP.	Guinée Rep.				
	HONDURAS	Honduras				
	ICELAND	Iceland				
	JAPAN	Japan	1	1	1	1
	KOREA REP.	Korea Rep.	1	1	1	1
	LIBERIA	Liberia	0	0		0
	LIBYA	Libya	0	0		1
	MAROC	Maroc	0	0	-0.2	0
	MAURITANIA	Mauritania		-0.2		
	MEXICO	Mexico	-0.2	1	1	1
	NAMIBIA	Namibia	1	1	1	1
	NICARAGUA	Nicaragua				
	NIGERIA	Nigeria				
	NORWAY	Norway	-0.2	1	1	1
	PANAMA	Panama	0	0	-0.2	-0.2
	PHILIPPINES	Philippines				
	RUSSIA	Russian Federation	1	0	1	0
	S. TOMÉ E PRINCIPE	S. Tomé e Príncipe		-0.2		
	SENEGAL	Senegal	0	0	0	-0.2
	SIERRA LEONE	Sierra Leone				
	SOUTH AFRICA	South Africa		1	1	-0.2
	St VINCENT & GRENADINES	St. Vincent and Grenadines		-0.2	1	1
	SYRIA	Syria	1	1	1	
	TRINIDAD & TOBAGO	Trinidad and Tobago	1	1	0	0
	TUNISIE	Tunisie	1	1	1	1
	TURKEY	Turkey	1	1	1	1
	UNITED KINGDOM (O.Territories)	UK.Bermuda	1	-0.2	1	
		UK.British Virgin Islands				
		UK.Sta Helena	1	1	1	-0.2
		UK.Turks and Caicos				
	UNITED STATES	U.S.A.	1	1	1	1
	URUGUAY	Uruguay				
	VANUATU	Vanuatu				
	VENEZUELA	Venezuela	0	0	-0.2	-0.2
NCC	Bolivia	Bolivia				
	Chinese Taipei	Chinese Taipei	1	1	1	1
	Colombia	Colombia				
	Costa Rica	Costa Rica				
	Guyana	Guyana	-0.2			
	Suriname	Suriname				

NOTES: NO FISHING ACTIVITY (flags in green, 14 flags): EU.Germany, FR.St Pierre et Miquelon, Honduras, Iceland, Nicaragua, Nigeria, Sierra Leone, UK.British Virgin Islands, UK.Turks and Caicos, Uruguay, Vanuatu, Colombia, Guyana, Suriname.

NO TARGETTING ACTIVITIES (some by-catch): EU.Denmark, EU.Germany, EU.Netherlands, and, EU.United Kingdom.

ERRORS/UNDER REVISION: Côte d'Ivoire, EU-France, EU-España, Ghana, Guatemala, Panama, etc.

Table 6. SCRS scorecard on Task 1/2 data availability for all the major ICCAT species by stock/region (methodology in SCRS/2019/045).

Tableau 6. Fiche de score du SCRS sur la disponibilité des données de Tâche 1/2 pour toutes les principales espèces relevant de l'ICCAT, par stock/région (méthodologie détaillée dans SCRS/2019/045).

Tabla 6. Ficha de puntuaciones del SCRS sobre disponibilidad de datos de Tarea 1/2 para todas las especies principales de ICCAT por stock/région (metodología en el SCRS/2019/045).

SCORECARD on Task 1/2 availability for the main ICCAT fisheries (final year: 2019)										
Fishery ID	Species group	Species	Species/stock	SCORES (by time series)			N. flag fisheries ranked			Change (%) againt 1989-18 (30 yrs)
				10 years (2010-19)	20 years (2000-19)	30 years (1990-19)	10 years (2010-19)	20 years (2000-19)	30 years (1990-19)	
1	Temperate tunas	ALB	ALB-N stock	7.32	7.38	7.07	11	14	12	-1%
2			ALB-S stock	6.09	5.98	5.65	9	10	10	2%
3			ALB-M stock	6.78	3.78	2.52	6	9	11	12%
4		BFT	BFT-E stock (ATE region)	8.72	7.13	5.98	8	8	10	2%
5			BFT-E stock (MED region)	5.85	4.46	3.38	17	21	28	2%
6			BFT-W stock	9.68	8.88	8.68	7	8	9	1%
7	Tropical tunas	BET	BET-A stock (AT + MD)	7.65	7.21	6.40	27	28	29	-1%
8		YFT	YFT-E region	7.96	7.46	6.52	16	20	23	0%
9			YFT-W region	5.38	5.01	4.63	21	24	24	0%
10		SKJ	SKJ-E stock	7.89	7.77	6.88	15	16	18	0%
11			SKJ-W stock	4.44	4.67	4.09	3	3	4	-12%
12	SWO & billfish	SWO	SWO-N stock	8.62	8.66	7.87	10	10	11	4%
13			SWO-S stock	7.09	7.26	7.03	9	9	9	3%
14			SWO-M stock	6.76	5.30	4.46	8	10	11	1%
15		BUM	BUM-A stock (AT + MD)	3.67	3.90	4.08	31	30	30	-1%
16		WHM	WHM-A stock (AT + MD)	5.80	5.37	5.31	15	18	17	-1%
17		SAI	SAI-E stock	3.34	3.60	3.04	11	13	14	1%
18			SAI-W stock	4.17	3.58	3.60	11	16	18	1%
19		SPF	SPF-E stock	4.75	5.23	2.81	3	4	3	29%
20			SPF-W stock	3.29	3.81	3.48	6	6	6	-1%
21	Major shark species	BSH	BSH-N region	7.00	4.98	3.74	4	5	5	6%
22			BSH-S region	6.82	5.81	4.18	7	6	6	6%
23		POR	POR-ANE stock	1.08	0.63	0.39	11	12	8	4%
24			POR-ANW stock	3.18	2.86	2.73	8	6	4	3%
25			POR-ASE stock	2.67	1.13	0.70	2	3	4	2%
26			POR-ASW stock	1.42	0.77	0.44	3	5	6	0%
27		SMA	SMA-N region	5.95	4.55	3.02	7	7	6	9%
28			SMA-S region	7.33	6.26	3.85	6	8	7	6%
29	Small tuna species	BLF	A+M	4.05	3.72	3.04	10	12	15	1%
30		BLT	A+M	2.78	1.51	0.94	18	20	22	17%
31		BON	ATL	3.07	2.68	2.17	22	28	35	13%
32			MED	1.51	1.26	0.74	8	8	8	-11%
33		BRS	A+M	2.50	1.38	0.92	1	3	3	0%
34		DOL	A+M	3.42	2.42	1.82	15	14	14	7%
35		FRI	ATL	5.73	5.36	4.44	21	23	28	3%
36		KGM	A+M	2.65	1.46	1.34	4	7	7	3%
37		LTA	ATL	5.23	4.66	3.76	21	25	32	4%
38			MED	1.12	0.88	0.57	12	15	18	22%
39		MAW	A+M	2.07	2.23	2.05	12	15	21	2%
40		SSM	A+M	0.00	0.00	0.50	3	3	4	-14%
41		WAH	A+M	2.14	2.24	1.71	20	28	36	1%

Table 7. Summary of the total number of conventional tags reported (released and/or recovered, covering all ICCAT species) by flag CPC between 2019-10-01 and 2020-10-05. The figures shown include data received directly by ICCAT, as well as those provided by the GBYP and AOTTP projects.

Tableau 7. Résumé du nombre total de marques conventionnelles soumises (apposées et/ou récupérées, couvrant toutes les espèces de l'ICCAT) par CPC de pavillon entre 2019-10-01 et 2020-10-05. Les chiffres indiqués incluent les données reçues directement par l'ICCAT ainsi que les données fournies par les projets GBYP et AOTTP.

Tabla 7. Resumen de número marcas convencionales comunicadas (colocadas y recuperadas, para todas las especies de ICCAT) por CPC de pabellón entre 2019-10-01 y el 2020-10-05. Las cifras mostradas incluyen los datos recibidos directamente por ICCAT, así como los aportados por los proyectos GBYP y AOTTP.

	Release Flag																	TOTAL
	Brasil	Canada	Côte D'Ivoire	EU.Denmark	EU.España	EU.France	EU.IRL	EU.Italy	EU.Portugal	EU.United Kingdom	Norway	S. Tomé e Príncipe	South Africa	U.S.A.	UK.Sta. Helena	Uruguay	UNCL.FLEETS	
Recovered by																		
Algerie					2													2
Bahamas					6													6
Belize					5													5
Brasil	809				39											2		850
Canada		3															9	12
Cape Verde	2				124				10			8			1			145
Côte D'Ivoire	4		2355		838				2			10			1			3210
Cuba		1																1
Curaçao	5		1		642				3			8			6			665
El Salvador	1		1		354				19			8			3			386
EU.Croatia																	3	3
EU.España	3	9	5		5517	2			121	10		19		65	3	1	31	5786
EU.France	5		35		469				2	1		3			5		7	527
EU.Italy								1									9	10
EU.Malta					1												36	37
EU.Netherlands					5													5
EU.Portugal	1				145				310					2				458
EU.United Kingdom																	1	1
Ghana	8		85		461				1			34			7			596
Guatemala	2				62				1			4			3			72
Kiribati					1													1
Marococ					2				2								3	7
Panama	3		2		430				9			9			2			455
S. Tomé e Príncipe												16						16
Senegal	1		7		4033				35			2			2			4080
South Africa													7					7
St. Vincent and Grenadines														1				1
Tunisie																	7	7
Turkey																	14	14
U.S.A.					2				1					51			3	57
UK.Sta. Helena															962			962
Venezuela																	24	24
Total recovered	844	13	2491	0	13138	2	0	1	516	11	0	121	7	119	995	3	147	18408
Not yet recovered (at sea)	32317	549	9177	50	40628	16	26	169	7580	101	4	6886	188	1882	4781	23		104377
TOTAL	33161	562	11668	50	53766	18	26	170	8096	112	4	7007	195	2001	5776	26	147	122785

Table 8. Summary of the conventional tags distributed by the Secretariat between 2019-10-01 and 2020-10-05.

Tableau 8. Résumé des marques conventionnelles distribuées par le Secrétariat entre le 2019-10-01 et le 2020-10-05.

Tabla 8. Resumen de las marcas convencionales distribuidas por la Secretaría entre 2019-10-01 y el 2020-10-05.

TagAlfa	From	To	Quantity	DateSent	Institution	Principal Investigator	Country
BYP	11075	11574	500	2019-09-25	DINARA-Dirección Nacional de Recursos Acuáticos	Rodrigo Forselledo	URUGUAY
BYP	50050	50549	500	2019-09-25	DINARA-Dirección Nacional de Recursos Acuáticos	Rodrigo Forselledo	URUGUAY
BYP	31876	31975	100	2019-10-17	APR - Alleanza Pescatori Ricreativi	Laura Pisano	EU.ITALY
BYP	11575	11674	100	2020-02-18	IEO-Málaga	David Macias	EU.ESPAÑA
SEC	50550	50649	100	2020-02-18	IEO-Málaga	David Macias	EU.ESPAÑA
BYP	31976	32075	100	2020-05-14	DIRECTORATE OF FISHERIES	Maja K. Rodriguez Brix	NORWAY
BYP	63951	64150	200	2020-05-14	Portuguese Ocean and Atmosphere Institute (IPMA)	Pedro Lino	EU.PORTUGAL
BYP	80051	80550	500	2020-06-10	Marine Institute	Alan Drumm	EU.IRELAND
BYP	80551	80850	300	2020-08-19	Marine Institute	Alan Drumm	EU.IRELAND
BYP	80851	80900	50	2020-08-19	Havsfiskelaboratoriet	Andreas Sundelöf	EU.SWEDEN
BYP	64151	64200	50	2020-08-19	Havsfiskelaboratoriet	Andreas Sundelöf	EU.SWEDEN
BYP	32076	32225	150	2020-08-19	Havsfiskelaboratoriet	Andreas Sundelöf	EU.SWEDEN

Table 9. Summary of information provided in form ST09-DomObPrg on by-catch species (including discards) by CPCs for 2019. Values are in numbers and weight in kg.

Tableau 9. Informations saisies dans le formulaire ST09-DomObPrg sur les espèces de prise accessoire (rejets y compris) par CPC au titre de 2019. Les valeurs sont exprimées en kg et nombre.

Table 9. Información de 2019 sobre especies de captura fortuita (descartés incluidos) proporcionada por las CPC en el formulario ST09-DomObPrg. Los valores están expresados en kg y en número.

Row Labels	1-Tuna (major sp.)	2-Tuna (small)	3-Tuna (other)	4-Sharks (major)	5-Sharks (other)	7-Turtles	8-Seabirds
Sum of observed catch number							
Belize	1488	183		27	42		
Brazil	6956	260	64	12812	52	0	
Canada	2758			102	11	0	
Cape Verde	48	335		0	0	0	
China PR	9626	132	17	628	72	0	
Chinese Taipei	80970	507	96	1035	96		
Curaçao	767	4037	0	0	2	1	
EU.Cyprus	2434			3	75		
EU.España	1326	755	7	2	0	0	0
EU.France	1973	13976	2	0	5	1	
EU.Greece	1008						
EU.Italy	4076						
EU.Portugal	2997	54	13	9851	506	59	
Japan					0	0	0
Korea Rep.	27797	115	20467	7897			
Mexico	24770	2449	52	31	165		
Norway	233						
Russian Federation	9781	875883		0	0		
Tunisie	18754						
Turkey	208						
U.S.A.	25205	10045	1	1151	134	0	0
Algerie	33						
El Salvador	34	3200	0	0	5	0	
Maroc	788			928			
Sum of live discards (numbers)							
Belize	0	0		0	0		
Brazil	104	0	0	0	38	26	
Canada	66			1441	196	1	
Cape Verde	0	0		1	41	1	
China PR	21	43	4	702	90	11	
Chinese Taipei	39	0	0	6	0		
Curaçao	5	45	0	19	1198	113	
EU.Cyprus	0			3	6		
EU.España	1	0	0	0	4	6	
EU.France	9	198	0	20	1369	187	
EU.Greece	0						
EU.Italy	0						
EU.Portugal	11	0	1	47	103	43	
Japan					1458	146	20
Korea Rep.	3	0	0	1323			
Mexico	1771	57	1	13	23		
Norway	0						
Russian Federation	0	0		0	0		
Tunisie	0						
Turkey	0						
U.S.A.	2535	1240	231	3688	3645	123	6
Algerie	0						
El Salvador	24	1	0	36	3016	146	
Maroc	0			6			
Sum of dead discards (numbers)							
Belize	0	0		0	0		
Brazil	112	0	0	0	26	2	
Canada	38	0		92	50	0	
Cape Verde	0	0		0	19	0	
China PR	180	81	22	797	63	5	
Chinese Taipei	810	3	0	69	0		
Curaçao	62861	25067	23609	6	548	0	
EU.Cyprus	0			0	0		
EU.España	0	0	0	0	0	1	
EU.France	119589	184852	19	21	890	0	
EU.Greece	90						
EU.Italy	0						
EU.Portugal	63	3	12	9	296	16	
Japan					936	76	1156
Korea Rep.	0	0	0	4596			
Mexico	558	19	0	0	1		
Norway	0						
Russian Federation	0	0		0	0		
Tunisie	11						
Turkey	0						
U.S.A.	5419	1971	169	301	1636	3	3
Algerie	0						
El Salvador	437	410	5	10	722	0	
Maroc	6			20			
Sum of discards of unknown fate (numbers)							
Belize	0	0		0	0		
Brazil	0	0	0	0	0	0	
Canada	0			29	3	0	
Cape Verde	0	0		0	0	0	
China PR	0	0	0	0	0	0	
Chinese Taipei	12	0	0	3	0		
Curaçao	0	0	0	0	0	0	
EU.Cyprus	15			0	3		
EU.España	145	13	2	44	0	0	0
EU.France	0	0	0	0	0	0	
EU.Greece	0						
EU.Italy	0						
EU.Portugal	43	0	0	0	22	0	
Japan					8	12	58
Korea Rep.	0	0	0	0			
Mexico	0	0	0	0	0		
Norway	0						
Russian Federation	0	0		0	0		
Tunisie	0						
Turkey	0						
U.S.A.	0	0	0	0	0	0	0
Algerie	0						
El Salvador	0	0	0	0	0	0	
Maroc	0			0			
Sum of observed fish weight (kg)							
Belize	44520	1590		585	600		
Brazil	3	0	0	0	0	0	
Canada	165783			3875	678	0	
Cape Verde	4253	2294		0	0	0	
China PR	358899	2194.4	210	2865	814	0	
Chinese Taipei	1804110	2556	2553	30741	1470		
Curaçao	41070	37255	0	0	152	53	
EU.Cyprus	20230			90	858		
EU.España	49272.87	7938.94	58	17.85	0	0	0
EU.France	62000	192030	2043	0	59	40	
EU.Greece	19858						
EU.Italy	185217						
EU.Portugal	0	0	0	0	0	0	
Japan					0	0	0
Korea Rep.	821255	1343	1201905	176790			
Mexico	922532	23879	956	2059	11944		
Norway	47699						
Russian Federation	25000	1475000		0	0		
Tunisie	1880016						
Turkey	11595.9						
U.S.A.	0	0	0	0	0	0	0
Algerie	5280						
El Salvador	3407	37895	0	0	199	0	
Maroc	30499.6			22526.1			
Total Sum of observed catch number	224030	911931	20719	34467	1165	61	0
Total Sum of live discards (numbers)	4589	1584	237	7305	11154	801	32
Total Sum of dead discards (numbers)	190174	212406	23836	5921	5185	102	1160
Total Sum of discards of unknown fate (numbers)	215	13	2	76	36	12	58
Total Sum of observed fish weight (kg)	6502497.37	1783975.34	1207725	239548.95	16774	93	0

Table 10. Information on dead discards (DD), live discards (DL) reported in T1NC by CPCs for 2019. Values are expressed in tons.

Tableau 10. Informations fournies sur les débarquements (T1NC) d'espèces accessoires, par CPC, pour 2019. Les valeurs sont exprimées en tonnes.

Tabla 10. Información facilitada sobre desembarques (T1NC) de especies de captura fortuita por CPC para 2019. Los valores están expresados en toneladas.

	CANADA		Chinese Taipei		EUROPEAN UNION		JAPAN	KOREA REPUBLIC	MEXICO		UK (O.Territories)		UNITED STATES		VENEZUELA		GABON	Grand Total
	DD	DL	DD	DL	DD	DL	DD	DD	DL	DD	DL	DD	DL	DD	DL	DD		
1-Tuna (major sp.)	5	35	94	339	0	95			4	15	0	15	337	106		205		1250
ALB	0	0				39						0				151		190
BET	0	2		10		15					0	0						27
BFT	3	21		4		9				1			6					44
BUM		0	22	9	0	8			0	1	0	13	31	67				151
SAI			5	2	0				0	0			5	3				15
SKJ				208					0	0		0						208
SPF			8			9					0	0						17
SWO	2	9	57	89		8			0	0	0	0	291	36				493
WHM	0	3	3			1			0	0		1	4	0	54			66
YFT	0	0		17		5			3	13	0	1						40
2-Tuna (small)				103	1				0	0		0					9	114
FRI				26													2	27
BLF										0		0						0
BON																	2	2
DOL				2	0				0	0		0						3
LTA				69								0						69
WAH				6	1				0	0		0						7
MAW																	6	6
3-Tuna (other)			3	5						0								8
GES				0														0
SSP			3								0							3
TUN				5														5
4-Sharks (major)	8	506	179	1	1	330	36			1		1	43					1105
BSH	4	446	176	0	1	298	36					1	29					990
POR	3	47	0										13					64
SMA	1	12	3	1	1	32				1		0	2					52
5-Sharks (other)	2	31	10	28	135				0	1	0	1	66		1	0		276
ALV			8															8
BSK	2	19																21
BTH			1										17		0			18
CCG												0						0
FAL			0	13	19					1	0	0	7		0	0		41
LMA													13					13
MAN					0													0
OCS			1		0					0			2		0			3
PLS	0	1		0	0							0						2
RHN					81													81
RMB		0			1													1
RMM				4	11													16
RMT				0	1													2
RSK											0	0						1
SPK		2	0		3													5
SPL			0	0	3								4		0			8
SPN					0				0	0			7					7
SPZ			0	10	14								1					24
THR	0	1								0			16					18
TIG		8																8
6-Other Species				99	246							0						345
ALM				0	0													0
CFW				0	0													0
CNT				23	39													62
DIY					0													0
GBA				1	0													1
LGH				0	0													0
MOX				0	2							0						2
MRW					0													0
NAU				0	0													0
POA				0	0													0
RRU				27	107							0						134
RUB				44	94													139
TRG				0	0													0
YTL				3	3													6
7-Sea turtles		11			9													20
DKK		11			2													13
LKV					3													3
LKY					0													0
TTL		0.1125			3.631													3.7435
TUG					0.27													0.27
Grand Total	15.7	582.6	286.3	574.4	392.7	424.7	35.8	3.8	17.3	0.5	16.9	446.7	105.7	205.5	0.0	9.4		3117.9

Table 11. Sea turtle species dead discard (DD) and live discards (DL) data reported on form ST09-DomObPrg by CPCs and cooperating parties for 2019.

Tableau 11. Informations saisies dans le formulaire ST09-DomObPrg sur les espèces de tortues marines (rejets y compris) par CPC au titre de 2019.

Table 11. Información de 2019 sobre especies de tortugas marinas (descartes incluidos) proporcionada por las CPC en el formulario ST09-DomObPrg.

Row Labels	Green turtle	Hawksbill turtle	Kemp's ridley turtle	Leatherback turtle	Loggerhead turtle	Marine turtles nei	Olive Ridley turtle	Grand Total
Sum of observed catch number								
Brazil				0			0	0
Canada				0				0
Cape Verde				0				0
China PR				0			0	0
Curaçao		0	0	0	1	0	0	1
EU.España				0	0			0
EU.France	0		0	0	0	1	0	1
EU.Portugal				21	4		34	59
Japan				0	0	0	0	0
U.S.A.				0	0			0
El Salvador	0	0		0	0		0	0
Sum of live discards (numbers)								
Brazil				14			12	26
Canada				1				1
Cape Verde				1				1
China PR				10			1	11
Curaçao		2	5	7	61	1	37	113
EU.España					4			4
EU.France	11		1	8	83	0	84	187
EU.Portugal				21	4		18	43
Japan				22	42	4	78	146
U.S.A.				87	36			123
El Salvador	17	6		3	11		109	146
Sum of Dead Discards (numbers)								
Brazil				0			2	2
Canada				0				0
Cape Verde				0				0
China PR				4			1	5
Curaçao		0	0	0	0	0	0	0
EU.España					0			0
EU.France	0		0	0	0	0	0	0
EU.Portugal				0	0		16	16
Japan				2	54	2	18	76
U.S.A.				2	1			3
El Salvador	0	0		0	0		0	0
Sum of discards of unknown status (numbers)								
Brazil				0			0	0
Canada				0				0
Cape Verde				0				0
China PR				0			0	0
Curaçao		0	0	0	0	0	0	0
EU.España					0			0
EU.France	0		0	0	0	0	0	0
EU.Portugal				0	0		0	0
Japan				6	2	2	2	12
U.S.A.				0	0			0
El Salvador	0	0		0	0		0	0
Sum observed catch weight (kg)								
Brazil				0			0	0
Canada				0				0
Cape Verde				0				0
China PR				0			0	0
Curaçao		0	0	0	53	0	0	53
EU.España					0			0
EU.France	0		0	0	0	40	0	40
EU.Portugal				0	0		0	0
Japan				0	0	0	0	0
U.S.A.				0	0			0
El Salvador	0	0		0	0		0	0
Total Sum of observed catch number	0	0	0	21	5	1	34	61
Total Sum of live discards (numbers)	28	8	6	174	241	5	339	801
Total Sum of NoDD	0	0	0	8	55	2	37	102
Total Sum of discards of unknown status (numbers)	0	0	0	6	2	2	2	12
Total Sum observed catch weight (kg)	0	0	0	0	53	40	0	93

Table 17. Summary of Task 2 size information historical series updated during 2019 (number of fish by species flag, gear, time-area stratification) and already in ICCAT-DB system.
 Tableau 17. Résumé des séries historiques des données de tailles de Tâche 2 mises à jour en 2019 (nombres de poissons par espèce, pavillon, engin, stratification spatio-temporelle) et déjà saisies dans le système ICCAT-DB.
 Tabla 17. Resumen de las series históricas de información sobre talla de Tarea 2 actualizadas durante 2019 (número de ejemplares por especie, pabellón, arte, estratificación espacio-temporal) ya en el sistema ICCAT-DB.

DSet	Species	Gear group	Flag	Time strata	Geog. strata	Freq. Type	Decade/Year																													Remarks						
							1970						1980						1990						2000																	
							1972	1973	1974	1975	1976	1977	1978	1979	1980	1981	1982	1983	1984	1985	1986	1987	1988	1989	1995	1996	1998	1999	2000	2001	2002	2003	2004	2005	2006		2007	2008	2009	2010	2011	2012
T2SZ	SWO	LL	EU.Italy	mm	LattLon	LJFL (1 cm)																																SCRS/2020/020 (adopted)				
			EU.Greece	mm	5x10	LJFL (1 cm)																																GTserpers (adopted)				
	HP	EU.Italy	mm	LattLon	LJFL (1 cm)	219	261	366	269	298	306	320	324	285	321	200	243	193	201	321	226	325	244																		SCRS/2020/020 (adopted)	
	GN	EU.Italy	mm	LattLon	LJFL (1 cm)	517	652	510	543	490	552	468	562	528	615	552	491	526	542	625	610	524	546																			
BFT	LL	U.S.A.	mm	ICCAT	SFL (1 cm)																																	USA correction (adopted)				
						HP	U.S.A.	mm	ICCAT	CFL (1 cm)																															USA correction (adopted)	
	PS	EU.España	mm	5x5	SFL (1 cm)																																					
						EU.Italy	mm	5x5	SFL (1 cm)																																	
	EU.Greece	mm	5x5	SFL (1 cm)																																						
	Maroc	mm	5x5	SFL (1 cm)																																						
	Tunisie	mm	5x5	SFL (1 cm)																																						
	Turkey	mm	5x5	SFL (1 cm)																																						
	EU.Croatia	mm	5x5	SFL (1 cm)																																						
	EU.Malta	mm	5x5	SFL (1 cm)																																						
	EU.Cyprus	mm	5x5	SFL (1 cm)																																						
	U.S.A.	mm	ICCAT	CFL (1 cm)																																						
	RR	U.S.A.	mm	ICCAT	CFL (1 cm)																																		USA correction (adopted)			

Table 18. Bluefin tuna catches (t) report from the Bluefin Catch Document Program (e-BCD, 2018-2020). Updated as of 2020-10-05.

Tableau 18. Déclaration de capture du thon rouge (t) du programme de documentation des captures de thon rouge (e-BCD, 2018-2020). Actualisé au 2020-10-05

Tabla 18. Informes de capturas (t) de atún rojo del Programa de documentación de capturas de atún rojo (e-BCD, 2018-2020). Actualizado a 2020-10-05.

Year (catch)	Month	Fishing CPC												TOTAL	
		ALBANIA	ALGÉRIE	CHINA REP	EGYPT	EUROPEAN UNION	JAPAN	KOREA REP.	LIBYA	MAROC	NORWAY	SYRIA	TUNISIE		TURKEY
2018	1					40									40
2018	2					61									61
2018	3					220				0			0		221
2018	4					522							0		522
2018	5					8529			65	1781		764	290		11429
2018	6	100	1300		181	4682			1729	661		66	1328	982	11029
2018	7					361				16				2	379
2018	8					426				14	0			5	446
2018	9					346		6		38	11			1	402
2018	10			79		190	1649	174		55	1			1	2148
2018	11					87	677							3	766
2018	12					62									62
2018 Total		100	1300	79	181	15526	2326	179	1795	2565	12	66	2092	1284	27504
2019	1					69									69
2019	2					131									131
2019	3					367					0				367
2019	4					448								1	449
2019	5				59	6178				1823		72	241	425	8800
2019	6	156	1437		204	7991			2044	856			2133	1336	16157
2019	7					572				126				1	699
2019	8					421				57	3			2	482
2019	9					309				35	47			3	394
2019	10			27		220	1615	183		24	0			1	2069
2019	11			62		149	918	18							1147
2019	12					142	50							3	196
2019 Total		156	1437	89	263	16998	2583	200	2044	2920	51	72	2374	1771	30959
2020	1					84	0	0							84
2020	2					159									159
2020	3					225									225
2020	4					460								0	460
2020	5	168				9880			130	2111			557	607	13452
2020	6		1333		122	6049			1884	795		79	2027	1645	13934
2020	7		299			902			221	250			60		1732
2020	8					514				140	44			1	700
2020	9					341				108	132			0	582
2020	10					33				23					56
2020 Total		168	1632	0	122	18647	0	0	2235	3428	177	79	2643	2253	31384

Table 20. Reported catch (t) of BFT (Eastern and Western stocks) according to the Monthly Catch Reports (2020 is incomplete) as of 2020-10-05..
 Tableau 20. Prises déclarées (t) de thon rouge (stocks de l'Est et de l'Ouest) d'après les rapports mensuels de capture (l'année 2020 est incomplète) au 2020-10-05..
 Tabla 20. Captura declarada (t) de atún rojo (stocks del Este y del Oeste) según los informes de captura mensuales (2020 está incompleto) a 2020-10-05..

Catch (t)		Eastern Stock Unit															Grand Total			
Season Year	Fishing Year	Month	Albania	Algerie	China PR	Egypt	European Union	Iceland	Japan	Korea Rep	Libya	Maroc	Norway	Syria	Tunisie	Turkey				
2018	2018	1					43										0	43		
		2					60											0	60	
		3					229							0				0	229	
		4					528												0	528
		5		0			8658					84	1781			0	765	290	11578	
		6		1300			4718					1682	661		66	1328	982		10738	
		7					416	0					16		0	0	0	2	434	
		8					272	0					14		0	0	2	5	293	
		9					318	0				6	38		12	0	3	1	377	
		10				79	175	0	1880		174		55				5	1	2368	
		11					67	0	291									3	361	
		12					55	0										0	55	
2018 Total				1300	79		15539	0	2171	179	1767	2564	12	66	2104	1284		27065		
2019	2019	1					25											0	25	
		2					133											0	133	
		3					368											0	368	
		4					442						0					1	442	
		5	0	0		59	6025					0	1837		72	259	425	8678		
		6	156	1437		204	6967					2044	856		0	0	2117	1336	15116	
		7					496						126			0		1	623	
		8					419	0					57				4	2	484	
		9					329	0					34						3	366
		10					236	0			183		24						1	443
		11					104	0			18								0	122
		12					66	0											3	69
2019 Total			156	1437		263	15610	0		200	2044	2934	3	72	2380	1771		26870		
2020	2020	1					81												81	
		2					154												154	
		3					225												225	
		4					446												446	
		5	169	0		0	7702					112	2048			572	607	11210		
		6		1350		122	5738					765	765		79	2016	1645	12481		
		7		299			850						250			60				
		8					251						105		44					
		9					165					31	107		55					358
		10										31	15							46
2020 Total			169	1649		122	15612			62	878	3290	99	79	2648	2252		25002		

Catch (t)		Western Stock Unit						Grand Total		
Season Year	Fishing Year	Month	Canada	FR.St Pierre et Miquelon	Japan	Mexico	U.S.A.		UK. Bermuda	
2018	2018	1		0			2	11		12
		2		0			2	68		71
		3		0			33	17		50
		4		0			26	6		31
		5		0			14	13		27
		6	3	0			0	52		55
		7	5	0			0	196		201
		8	48	0			0	223		271
		9	123	0			0	253		376
		10	235	0	122		0	126		484
		11	88	0	273		0	47		409
		12	4	0			2	16		23
2018 Total			506	0	396	79	1029		2009	
2019	2019	1		0			3	28		31
		2		0			5	97		102
		3		0			21	17		38
		4		0			13	6		20
		5		0			0	21		21
		6	43	0			0	72		115
		7	4	0			0	319		323
		8	68	0			0	167		235
		9	240	0			0	249		489
		10	228	0	147		0	203		578
		11	57	0	259		0	12		328
		12	2	0			1	24		27
2019 Total			642	0	406	44	1215		2307	
2020	2020	1		0			0	29	1	30
		2					2	114	1	117
		3		0			11	9	0	20
		4		0			13	5	0	18
		5		0			2	5	0	7
		6	7	0			0	58	0	65
		7	2	0			0	143	0	145
		8	34	0			0	354	0	387
2020 Total			43	0		29	717	1	790	

Table 21. Quantity (t) of BFT caged by fishing and farming flag CPCs, between 2018 and 2020, as reported under Rec. [08-05] as of 2020-10-05.

Tableau 21. Volumes (t) de thon rouge mis en cages, par CPC de pavillon de pêche ou CPC de ferme, entre 2018 et 2020, tels que déclarés en vertu de la Rec. 08-05 au 2020-10-05.

Tabla 21. Cantidades (t) de atún rojo por CPC del pabellón pesquero o CPC de la granja introducido en jaulas entre 2018 y 2020 tal y como se declararon con arreglo a la Rec. 08-05 a 2020-10-05.

Caging Wgt (t)		Farming Flag							Grand Total
Farming Year	Fishing Flag	EU.Croatia	EU.España	EU.Malta	Maroc	Tunisie	Turkey	EU.Portugal	
2018	EU.España		4873						4873
	EU.France		387						387
	EU.Italy			1425					1425
	EU.Malta		365	6456					6822
	Maroc				4054				4054
	Tunisie			1384			655		2038
	Turkey							1736	1736
	EU.Portugal								125
	Belize			162					162
EU.Croatia		673						673	
2018 Total		673	5788	9266	4054	655	1736	125	22296
2019	EU.España		4832						4832
	EU.France		366						366
	EU.Italy			2151					2151
	EU.Malta		176	6549			160		6886
	Libya						239		239
	Maroc				5491				5491
	Tunisie						1299		1299
	Turkey							2634	2634
	EU.Portugal								111
Belize			507					507	
EU.Croatia		745						745	
2019 Total		745	5882	8700	5491	1698	2634	111	25262
2020	EU.España		479						479
	EU.France			564					564
	EU.Italy			2275					2275
	EU.Malta			4338					4338
	Libya			556					556
	Maroc				3098				3098
	Tunisie						2177		2177
	Turkey							2599	2599
	EU.Portugal								190
EU.Croatia		823						823	
2020 Total		823	479	7733	3098	2177	2599	190	17099

Table 22. Bi-annual Statistical Documents (SD) and Re-export Certificates (RC) reported to ICCAT, by species, between 2019-10-01 and 2020-10-02.

Tableau 22. Documents statistiques (SD) et Certificats de réexportation (RC) semestriels déclarés à l'ICCAT, par espèce, entre le 2019-10-01 et le 2020-10-02.

Tabla 22. Documentos estadísticos (DE) y Certificados de reexportación (CR) semestrales comunicados a ICCAT, por especies, entre el 2019-10-01 y el 2020-10-02.

Reporting CPC	Year	Semester	Date reported	BET		SWO		* Other
				SD	RC	SD	RC	
Canada	2019	2	2020-04-02	√		√		
China PR	2019	2	2020-03-31	√	√	√		
	2020	1	2020-09-15	√		√	√	
Chinese Taipei	2019	2	2020-04-01	√		√		
	2020	1	2020-09-14	√	√	√		
Côte d'Ivoire	2019	1	2019-10-01	√				
		2	2020-02-25	√				
EU (all flags combined)	2019	2	2020-03-31	√	√	√	√	
	2020	1	2020-09-15	√	√	√	√	
Ghana	2019	1	2020-07-29		√			
		2	2020-07-29		√			
Japan	2019	2	2020-03-25	√	√	√	√	
	2020	1	2020-09-15	√	√	√	√	
Korea Rep.	2019	2	2020-06-03	√	√	√	√	
	2020	1	2020-09-02	√	√	√	√	
Panama	2019	1	2019-11-13	√		√		
		2	2019-11-13	√		√		
Senegal	2019	2	2020-01-28					√
Turkey	2019	2	2020-04-01	√		√		
	2020	1	2020-08-25	√		√		√
U.S.A.	2019	1	2020-03-30			√	√	
		2	2020-03-30	√				√
	2020	1	2020-09-16	√		√	√	√

* Cannot be classified into SD or RC documents types (includes all 2 species).

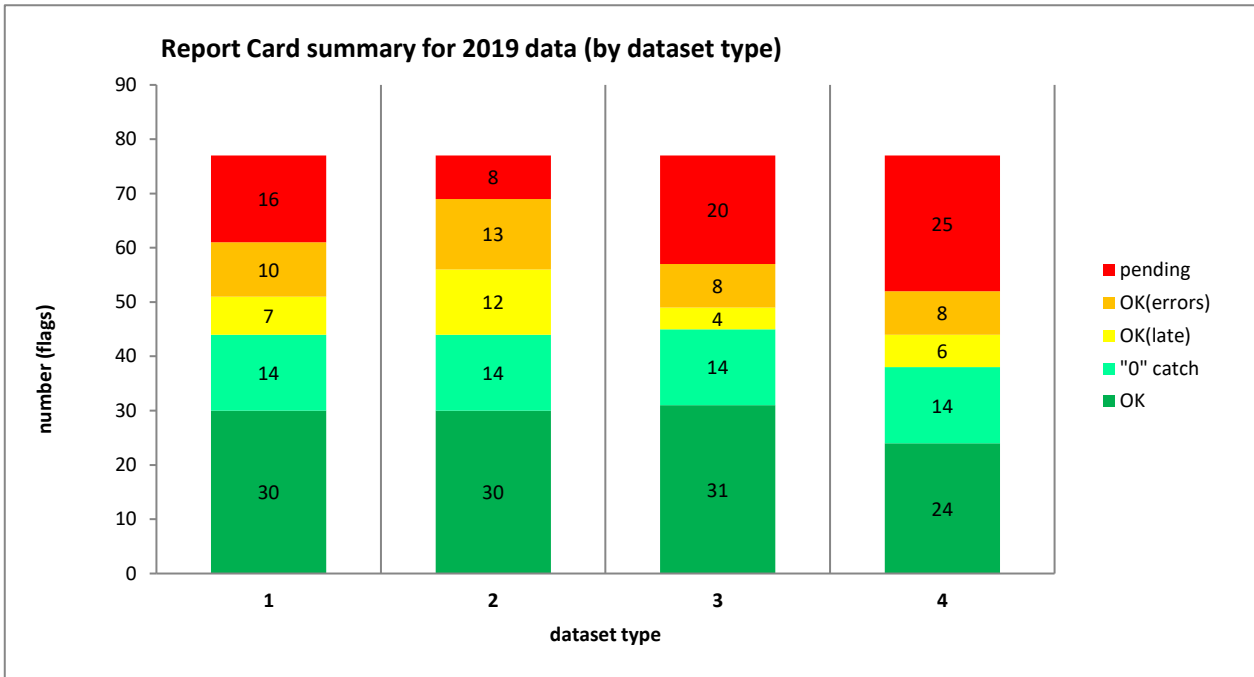
Table 26. Volumes published in 2019 within the ICCAT series of periodic publications.

Tableau 26. Volumes publiés en 2019 dans les séries des publications périodiques de l'ICCAT.

Tabla 26. Volúmenes publicados en 2019 dentro de las series periódicas de publicaciones de ICCAT.

Publication			Period	Format			Content
Name	Vol #	No.		Paper	CD	WEB	
Collect. Vol. Sci. Pap.	76		2019			√	Informes de las reuniones intersesiones y los documentos presentados a dichas reuniones
Collect. Vol. Sci. Pap.	77		2020			√	Informes de las reuniones intersesiones y los documentos presentados a dichas reuniones
Informe Bienal	2018- 2019 (Part II)	1	2019			√	Report of the 26th Regular Meeting of the Commission
		2	2019			√	Informe del SCRS
		3	2019			√	Informes anuales
		4	2019			√	Informes de la Secretaría (Investigación y estadísticas, administrativo, financiero, al COC y al PWG)
Boletín estadístico	46		1950-2018			√	Estadísticas ICCAT
Newsletter	31		Feb. 2020			√	Noticias
	32		Sept. 2020			√	

Figure 1. Summary of CPCs reporting status for 2019 data.
 Figure 1. Résumé de la situation de déclaration des CPC pour les données de 2019.
 Figura 1. Resumen del estado de comunicación de las CPC para datos de 2019.



As of 2020-10-05 (upper figure)

Values	Rep. status	Dataset type			
		T1FC	T2NC	T2CE	T2SZ/CS
number	OK	30	30	31	24
	"0" catch	14	14	14	14
	OK(late)	7	12	4	6
	OK(errors)	10	13	8	8
	pending	16	8	20	25
	TOTAL	77	77	77	77
%	OK	39%	39%	40%	31%
	"0" catch	18%	18%	18%	18%
	OK(late)	9%	16%	5%	8%
	OK(errors)	13%	17%	10%	10%
	pending	21%	10%	26%	32%

As of 2020-09-03

Values	Rep. status	Dataset type			
		T1FC	T2NC	T2CE	T2SZ/CS
number	OK	30	30	31	21
	"0" catch	14	14	14	14
	OK(late)	6	11	4	7
	OK(errors)	8	12	7	8
	pending	19	10	21	27
	TOTAL	77	77	77	77
%	OK	39%	39%	40%	27%
	"0" catch	18%	18%	18%	18%
	OK(late)	8%	14%	5%	9%
	OK(errors)	10%	16%	9%	10%
	pending	25%	13%	27%	35%

Appendix 1. Standard SCRS catalogues on statistics (Task-I and Task-II) of the 13 major ICCAT species (10 tuna & tuna like species and 3 shark species) by stock, major fishery (flag/gear combinations ranked by order of importance) and year (1990 to 2019). Only the most important fisheries (representing $\pm 97.5\%$ of Task-I total catch) are shown. For each data series, Task I (DSet= "t1", in t) is visualised against its equivalent Task II availability (DSet= "t2") scheme. The Task-II colour scheme, has a concatenation of characters ("a"= T2CE exists; "b"= T2SZ exists; "c"= T2CS exists) that represents the Task-II data availability in the ICCAT-DB. See the legend for the colour scheme pattern definitions.

Appendice 1. Catalogues standard du SCRS sur les statistiques (Tâche I et Tâche II) des 13 espèces principales de l'ICCAT (10 espèces de thonidés et espèces apparentées et 3 espèces de requins) par stock, pêcherie principale (combinaisons pavillon-engin classées par ordre d'importance) et année (1990 à 2019). Seules les pêcheries les plus importantes (représentant $\pm 97,5\%$ de la prise de Tâche I) sont présentées. Chaque série de données de la Tâche I (DSet= "t1", en tonnes) est représentée par rapport au schéma de disponibilité équivalent de la Tâche II (DSet= "t2"). Le schéma de couleurs de Tâche II présente une concaténation de caractères ("a"= T2CE existe; "b"= T2SZ existe; "c"= T2CS existe) qui représente la disponibilité des données de Tâche II dans la base de données de l'ICCAT. Veuillez vous reporter aux légendes pour les définitions du schéma de couleurs.

Apéndice 1. Catálogos estándar del SCRS sobre estadísticas (Tarea I y Tarea II) de las 13 especies principales de ICCAT (10 especies de túnidos y especies afines y 3 especies de tiburones) por stock, pesquería principal (combinaciones arte/pabellón clasificadas por orden de importancia) y año (1990 a 2019). Solo se muestran las pesquerías más importantes (que representan $\pm 97,5\%$ de la captura total de Tarea I). Cada serie de datos de Tarea I (DSet= "t1", en t) se visualiza con respecto a su esquema equivalente de disponibilidad de Tarea II (DSet= "t2"). En el esquema de colores de Tarea II, se incluye una concatenación de caracteres ("a"= T2CE existe; "b"= T2SZ existe; "c"= T2CS existe) que representa la disponibilidad de datos de Tarea II en la base de datos de ICCAT. Véase la leyenda para las definiciones del patrón del esquema

Table # Fishery

- 1 ALB-N stock
- 2 ALB-S stock
- 3 ALB-M stock
- 4 BFT-E stock (ATE region)
- 5 BFT-E stock (MED region)
- 6 BFT-W stock
- 7 BET-A stock (AT + MD)
- 8 YFT-E region
- 9 YFT-W region
- 10 SKJ-E stock
- 11 SKJ-W stock
- 12 SWO-N stock
- 13 SWO-S stock
- 14 SWO-M stock
- 15 BUM-A stock (AT + MD)
- 16 WHM-A stock (AT + MD)
- 17 SAI-E stock
- 18 SAI-W stock
- 19 SPF-E stock
- 20 SPF-W stock
- 21 BSH-N region
- 22 BSH-S region
- 23 POR-NE region
- 24 POR-NW region
- 25 POR-SE region
- 26 POR-SW region
- 27 SMA-N region
- 28 SMA-S region

LEGEND and color schemes used to show Task 2 (t2) availability

as of 2020-10-05

character	represents
a	T2CE
b	T2SZ
c	T2CS (*)

(*) Only 6 species require T2CS data: ALB, BFT, BET, YFT, SKJ, SWO

color scheme	
Concatenated string	represents
-1	no T2* data
a	T2CE only
b	T2SZ only
c	T2CS only
bc	T2SZ + T2CS
ab	T2CE + T2SZ
ac	T2CE + T2CS
abc	all

Table3. ALB-M stock

				T1 Total	1896	2379	2202	2138	1349	1587	3150	2541	2698	4856	5577	4870	5608	7898	4874	3529	5965	6520	2970	4024	2124	4628	2047	1503	2400	3554	4319	2780	2434	2484											
Species	Stock	Status	FlagName	GearGrp	DSet	1990	1991	1992	1993	1994	1995	1996	1997	1998	1999	2000	2001	2002	2003	2004	2005	2006	2007	2008	2009	2010	2011	2012	2013	2014	2015	2016	2017	2018	2019	Rank	%	%cum							
ALB	MED	CP	EU.Italy	LL	t1	624	523	436	402	347	81	366	172	172	307	2712	2445	3631	3786	1555	1189	1995	2721	2083	1497	1109	1634	1117	605	1342	1356	1480	1322	1029	1268	1	37.5%	37%							
ALB	MED	CP	EU.Italy	LL	t2	-1	-1	-1	b	a	a	a	a	a	a	ab	ab	a	ab	b	b	ab	b	bc	abc	abc	abc	abc	abc	abc	abc	abc	bc	abc	1										
ALB	MED	CP	EU.Italy	GN	t1	565	668	1025	873	759	1027	1383	1222	1222	2254	916	379	397																			2	12.1%	50%						
ALB	MED	CP	EU.Italy	GN	t2	a	a	a	ab	a	-1	-1	-1	-1	-1	ab	b	-1	b																		2								
ALB	MED	CP	EU.Italy	PS	t1													3079	2100	1046	2589	1249	15	1230			866		10	9	244	4	26	13	17	3	11.9%	61%							
ALB	MED	CP	EU.Italy	PS	t2													-1	-1	-1	b	-1	-1	-1		-1		-1	-1	-1	abc	-1	-1			3									
ALB	MED	CP	EU.Greece	UN	t1	500	500	500	1	1		952	741	1152	1950	1735	1786	1304																			4	10.6%	72%						
ALB	MED	CP	EU.Greece	UN	t2	-1	-1	-1	-1	-1		-1	-1	-1	-1	-1	-1	-1																				4							
ALB	MED	CP	EU.Cyprus	LL	t1													17	243	337	451	695	204	220	206	247	321	357	385	505	558	568	624	652			5	6.3%	78%						
ALB	MED	CP	EU.Cyprus	LL	t2													a	a	a	ab	abc	abc	abc	abc	abc	ab	a	abc	abc	abc	abc	abc	abc	abc	abc			5						
ALB	MED	CP	EU.Greece	LL	t1													35	33	40	36	445	427	323	242	257	191	116	125	126	126	165	287	541	1332	608	522	297	6	6.0%	84%				
ALB	MED	CP	EU.Greece	LL	t2													-1	-1	-1	-1	a	a	-1	a	-1	-1	-1	b	b	a	abc	a	ab	ab	ab			6						
ALB	MED	CP	EU.España	LL	t1																																		7	3.7%	88%				
ALB	MED	CP	EU.España	LL	t2	ab	ab	ab	ab	ab	ab	ab	ab	ac	ac	ac	ac	ac	37	1	109	148	322	421	abc	abc	abc	a	abc	ab	abc	abc	ab	abc	abc	abc	abc	abc			7				
ALB	MED	CP	Turkey	GN	t1																																		8						
ALB	MED	CP	Turkey	GN	t2																																			8					
ALB	MED	CP	EU.España	BB	t1	83	499	171	231	81	163	205							33	96	88	77	29																	9	1.7%	92%			
ALB	MED	CP	EU.España	BB	t2	ac	ac	ac	c	ac	ac	ac							ac	ac	a	ac	-1	ac															9						
ALB	MED	CP	Libya	LL	t1																																			10	1.5%	94%			
ALB	MED	CP	Libya	LL	t2																																			10					
ALB	MED	CP	EU.Greece	PS	t1																																			11	1.3%	95%			
ALB	MED	CP	EU.Greece	PS	t2																																			11					
ALB	MED	CP	EU.España	TR	t1		48	50	59	129	306	119	202	45	73																									12	1.1%	96%			
ALB	MED	CP	EU.España	TR	t2	abc	abc	abc	abc	abc	abc	abc	abc	abc	abc	abc	abc	abc	abc	abc	abc	abc	abc	abc	abc	abc	abc	abc	abc	abc	abc	abc	abc	abc	abc	abc	abc	abc	abc	abc			12		
ALB	MED	CP	Turkey	PS	t1																																				13	1.1%	97%		
ALB	MED	CP	Turkey	PS	t2																																				13				

Table 4. BFT-E stock (ATE region)

				T1 Total	6313	6543	7396	9317	7054	9780	12098	16379	11630	10247	10061	10086	10347	7394	7402	9023	7529	8441	8243	6684	4379	3984	3834	4163	3918	4841	5969	7216	8157	9326					
Species	Stock	Status	FlagName	GearGrp	DSet	1990	1991	1992	1993	1994	1995	1996	1997	1998	1999	2000	2001	2002	2003	2004	2005	2006	2007	2008	2009	2010	2011	2012	2013	2014	2015	2016	2017	2018	2019	Rank	%	%cum	
BFT	ATE	CP	Japan	LL	t1	1464	2981	3350	2484	2075	3971	3341	2905	3195	2690	2895	2425	2536	2695	2015	2598	1896	1612	2351	1904	1155	1089	1093	1129	1134	1386	1578	1911	2270	2524	1	28.0%	28%	
BFT	ATE	CP	EU.España	BB	t1	1614	1200	1046	3718	1999	2878	4979	6634	2605	1278	1939	2319	2478	1278	1847	2207	1190	2307	2326	1197	641	562	197	163	92	130	983	1109	617	754	2	22.0%	50%	
BFT	ATE	CP	EU.España	BB	t2	abc	abc	abc	abc	abc	abc	abc	abc	abc	abc	abc	abc	ac	ac	abc	abc	ac	bc	abc	abc	abc	abc	abc	abc	abc	abc	abc	abc	abc	abc	abc	3	17.3%	67%
BFT	ATE	CP	EU.España	TP	t1	2181	1040	1271	1244	1136	941	1207	2723	1926	3106	1416	1240	1548	784	862	880	1126	1348	1194	1209	887	902	1106	1370	1173	1466	968	1299	1764	1892	3	17.3%	67%	
BFT	ATE	CP	EU.España	TP	t2	ac	ac	ab	ab	ac	ab	ab	ac	ac	ab	ac	ac	c	c	abc	b	a	abc	abc	abc	abc	abc	ab	abc	abc	abc	bc	abc	4	16.0%	83%			
BFT	ATE	CP	Maroc	TP	t1	323	482	94	387	494	210	699	1240	1615	852	1540	2330	1670	1305	1098	1518	1744	2417	1947	1909	1348	1055	990	960	959	1176	1433	1703	2164	2476	4	16.0%	83%	
BFT	ATE	CP	Maroc	TP	t2	-1	-1	-1	-1	-1	-1	-1	-1	-1	-1	a	a	-1	-1	-1	-1	bc	abc	ab	abc	abc	ab	abc	abc	abc	abc	abc	abc	abc	abc	5	3.5%	87%	
BFT	ATE	CP	EU.France	TW	t1	101	70	441	436	224	400		57	259	247	394	456	599	518	289	423	829	501	180	295	122	28	36	120	118	166	211	228	315	309	5	3.5%	87%	
BFT	ATE	CP	EU.France	TW	t2	-1	-1	-1	-1	-1	-1	-1	-1	-1	-1	-1	-1	-1	-1	-1	-1	-1	-1	abc	abc	ab	ab	abc	abc	ab	ab	b	ab	ab	a	ab	5	3.5%	87%
BFT	ATE	CP	Maroc	PS	t1	54	46	462	24	213	458	323	828	692	709	660	150	884	490	855	871	179															6	3.3%	90%
BFT	ATE	CP	Maroc	PS	t2	b	b	-1	-1	-1	-1	-1	-1	-1	-1	-1	-1	-1	-1	-1	-1	-1	-1	-1	-1	-1	-1	-1	-1	-1	-1	-1	-1	-1	-1	-1	6	3.3%	90%
BFT	ATE	CP	EU.France	BB	t1	367	448	372	164	66	181	310	134	282	270	91	105	150	130	47	69	65	128	67	62	83	74	85	74	2	42	99	77	71	88	7	1.8%	92%	
BFT	ATE	CP	EU.France	BB	t2	-1	-1	-1	-1	-1	-1	-1	-1	-1	-1	-1	-1	-1	-1	-1	-1	-1	a	a	a	a	a	a	ab	ab	b	ab	a	a	ab	7	1.8%	92%	
BFT	ATE	CP	EU.Portugal	LL	t1	14	98	124	89	143	134	97	246	18	404	398	383	160	33	1	66	72	6	12	5		8	0		0	9	13	112	237	8	1.2%	93%		
BFT	ATE	CP	EU.Portugal	LL	t2	-1	a	a	-1	a	-1	-1	a	a	-1	-1	a	a	a	a	a	a	a	a	a	a	a	a	a	b	ab	ab	ab	ab	ab	8	1.2%	93%	
BFT	ATE	CP	EU.Portugal	TP	t1						1	15	19	45	2	40	15	17	27	18	9	25	23	24	46	57	180	215	233	243	263	315	361	330	225	9	1.2%	94%	
BFT	ATE	CP	EU.Portugal	TP	t2						b	abc	ac	ac	ab	ab	ab	ab	ab	b	b	b	b	b	b	ab	ab	ab	ab	ab	ab	ab	ab	ab	ab	9	1.2%	94%	
BFT	ATE	NCC	Chinese Taipei	LL	t1				6	20	4	61	226	350	222	144	304	158				10	4													10	0.6%	95%	
BFT	ATE	NCC	Chinese Taipei	LL	t2				-1	ab	ab	ab	ab	ab	ab	ab	ab	ab				ab	ab														10	0.6%	95%
BFT	ATE	CP	EU.France	GN	t1	42	47	74	497	21	144	253	3	72	71	57	68	6																			11	0.6%	96%
BFT	ATE	CP	EU.France	GN	t2	-1	-1	-1	-1	-1	-1	-1	-1	-1	-1	-1	-1	-1	-1	-1	-1	-1	-1	-1	-1	-1	-1	-1	-1	-1	-1	-1	-1	-1	-1	-1	11	0.6%	96%
BFT	ATE	CP	Korea Rep.	LL	t1				4	205	92	203				6	1		0	3																12	0.5%	96%	
BFT	ATE	CP	Korea Rep.	LL	t2				-1	a	a	a				a	a	a	a	a	a	a	a	a	a	a	a	a	a	a	a	a	a	a	a	12	0.5%	96%	
BFT	ATE	CP	China PR	LL	t1							85	103	80	68	39	19	41	24	42	72	119	42	38	36	36	38	37	45	54	64	79	89			13	0.5%	97%	
BFT	ATE	CP	China PR	LL	t2							-1	a	a	a	a	a	a	a	a	a	a	a	a	a	a	a	ab	abc	ab	abc	abc	abc	abc	abc	13	0.5%	97%	
BFT	ATE	CP	EU.España	HL	t1							162	28	33	126	61	63	109	87	11	4	10	6	2	21	19	25	21	16	59	35	101	107	82		14	0.5%	97%	
BFT	ATE	CP	EU.España	HL	t2							ab	ac	ac	ab	ac	ac	c	c	ab	ab	abc	abc	abc	abc	abc	abc	abc	abc	abc	abc	abc	abc	abc	abc	14	0.5%	97%	
BFT	ATE	CP	EU.Portugal	BB	t1			5	4	2	219	34	80	447	252	5	2	2	7	1	8	6	7	1												15	0.5%	98%	
BFT	ATE	CP	EU.Portugal	BB	t2	a	b	-1	a	ab	ab	abc	abc	ab	ab	a	a	a	ab	abc	ab	a	a			a											15	0.5%	98%

Table 6. BFT-W stock

		T1 Total																																						
Species	Stock	Status	FlagName	GearGrp	DSet	1990	1991	1992	1993	1994	1995	1996	1997	1998	1999	2000	2001	2002	2003	2004	2005	2006	2007	2008	2009	2010	2011	2012	2013	2014	2015	2016	2017	2018	2019	Rank	%	%cum		
BFT	ATW	CP	U.S.A.	RR	t1	752	696	324	540	462	844	840	931	777	760	683	1244	1523	991	716	425	376	634	658	860	682	592	568	365	478	694	867	795	880	980	1	33.1%	33%		
BFT	ATW	CP	U.S.A.	RR	t2	abc	abc	abc	abc	abc	abc	bc	abc	abc	abc	abc	abc	ab	ab	ab	ab	abc	abc	abc	abc	abc	abc	abc	abc	abc	abc	abc	abc	abc	abc	abc	1			
BFT	ATW	CP	Japan	LL	t1	550	688	512	581	427	387	436	330	691	365	492	506	575	57	470	265	376	277	492	162	353	578	289	317	302	347	345	346	407	406	2	18.6%	52%		
BFT	ATW	CP	Japan	LL	t2	abc	abc	abc	abc	abc	abc	abc	abc	abc	abc	abc	abc	abc	abc	abc	abc	abc	abc	abc	abc	abc	abc	abc	abc	abc	abc	abc	abc	abc	abc	abc	2			
BFT	ATW	CP	Canada	RR	t1	28	32	30	88	71	195	155	245	303	348	433	402	508	407	421	497	629	389	475	390	324	295	347	325	331	389	323	344	382	470	3	14.4%	66%		
BFT	ATW	CP	Canada	RR	t2	a	ab	ab	ab	ab	ab	ab	ab	ab	bc	abc	abc	abc	abc	abc	abc	abc	abc	abc	abc	abc	abc	abc	abc	abc	abc	abc	abc	abc	abc	abc	3			
BFT	ATW	CP	U.S.A.	LL	t1	275	305	347	177	177	185	211	235	191	156	222	242	130	224	299	275	211	205	173	233	335	239	241	295	208	222	89	105	115	103	92	4	9.6%	76%	
BFT	ATW	CP	U.S.A.	LL	t2	abc	abc	abc	abc	abc	abc	abc	abc	abc	abc	abc	b	ab	abc	abc	ab	abc	abc	abc	abc	abc	abc	abc	abc	abc	abc	abc	abc	abc	abc	abc	4			
BFT	ATW	CP	U.S.A.	PS	t1	384	237	300	295	301	249	245	250	249	248	275	196	208	265	32	178	4	28			11			43	42	39						5	6.1%	82%	
BFT	ATW	CP	U.S.A.	PS	t2	bc	bc	abc	abc	abc	abc	abc	abc	abc	abc	abc	ab	ab	b	b	b	bc	bc	4		bc	bc	2		43	42	bc	bc	39			5			
BFT	ATW	CP	Canada	TL	t1	404	447	403	284	203	262	298	138	172	125	81	79	39	42	49	44	35	23	24	37	40	30	34	52	40	35	15	23	3	12	6	5.2%	87%		
BFT	ATW	CP	Canada	TL	t2	ab	ab	ab	ab	ab	ab	ab	ab	ab	abc	abc	abc	abc	abc	abc	abc	abc	abc	abc	abc	abc	abc	abc	abc	abc	abc	abc	abc	abc	abc	abc	abc	6		
BFT	ATW	CP	U.S.A.	HP	t1	129	129	105	88	88	68	77	96	98	133	116	184	102	55	88	41	32	30	23	30	66	29	70	52	45	68	77	53	82	44	118	7	3.5%	91%	
BFT	ATW	CP	U.S.A.	HP	t2	bc	bc	bc	bc	bc	bc	bc	bc	bc	bc	bc	bc	bc	b	b	b	bc	bc	bc	bc	bc	bc	bc	bc	bc	bc	bc	bc	bc	bc	bc	bc	7		
BFT	ATW	CP	Canada	LL	t1	4	6	9	25	5	4	22	12	32	31	47	20	53	28	43	36	48	58	30	64	89	112	65	67	61	74	85	74	91	143	8	2.2%	93%		
BFT	ATW	CP	Canada	LL	t2	ab	a	a	a	ab	ab	ab	ab	ab	abc	abc	bc	abc	abc	abc	bc	abc	abc	abc	abc	abc	abc	abc	abc	abc	abc	abc	abc	abc	abc	abc	abc	8		
BFT	ATW	CP	U.S.A.	HL	t1	210	341	218	224	228	66	33	17	29	15	3	9	4			1	2	0		1	0	3	1	1	0				1	5	1	9	2.1%	95%	
BFT	ATW	CP	U.S.A.	HL	t2	bc	bc	bc	bc	bc	bc	bc	bc	bc	bc	bc	bc	b	b	b	b	c			c	bc	bc	bc	bc	bc	bc	bc	bc	bc	bc	bc	9			
BFT	ATW	CP	Canada	TP	t1	2		1	29	79	72	90	59	68	44	16	16	28	84	32	8	3	4	23	23	39	26	17	11	20	6	10	13	3	4	10	1.3%	96%		
BFT	ATW	CP	Canada	TP	t2	ab		ab	ab	ab	ab	ab	ab	ab	abc	abc	abc	abc	abc	abc	abc	abc	abc	abc	abc	abc	abc	abc	abc	abc	abc	abc	abc	abc	abc	abc	abc	10		
BFT	ATW	NCO	NEI (Flag related)	LL	t1											429	270	49																			11	1.1%	97%	
BFT	ATW	NCO	NEI (Flag related)	LL	t2											-1	-1	-1																			11			
BFT	ATW	CP	Canada	HP	t1				33	34	43	32	55	36	38	18	20	13	10	7	14	20	17	24	18	37	30	31	25	11	26	25	17	30	38	12	1.1%	98%		
BFT	ATW	CP	Canada	HP	t2				ab	ab	ab	ab	ab	ab	abc	abc	abc	abc	abc	abc	abc	abc	abc	abc	abc	abc	abc	abc	abc	abc	abc	abc	abc	abc	abc	abc	abc	12		
BFT	ATW	CP	Mexico	LL	t1	2	9	15	17	4	23	19	2	8	14	29	10	12	22	9	10	14	7	7	10	14	14	52	23	51	53	55	34	80	39	13	1.0%	99%		
BFT	ATW	CP	Mexico	LL	t2	-1	-1	-1	-1	ab	b	ab	ab	ab	ab	ab	bc	b	ab	ab	ab	ab	abc	abc	abc	abc	abc	abc	abc	abc	abc	abc	abc	abc	abc	abc	abc	13		

Table 11. SKJ-W stock

				T1 Total	26110	33404	30155	33221	29949	21860	27562	31712	29087	27356	29193	31451	21600	24749	27461	28517	26453	25443	22022	25774	25907	32411	32835	35081	27196	20711	22083	23569	21965	19357							
Species	Stock	Status	FlagName	GearGrp	DSet	1990	1991	1992	1993	1994	1995	1996	1997	1998	1999	2000	2001	2002	2003	2004	2005	2006	2007	2008	2009	2010	2011	2012	2013	2014	2015	2016	2017	2018	2019	Rank	%	%cum			
SKJ	ATW	CP	Brazil	BB	t1	20130	20548	18533	17762	20582	16530	22517	25821	23570	22948	24691	24038	18185	20416	23036	25269	23029	23783	20632	23077	22627	29322	30569	32127	24787	17499	16418	14577	14886	15355	1	80.2%	80%			
SKJ	ATW	CP	Venezuela	PS	t1	3014	6186	6893	10049	5692	2059	3348	3604	3607	2696	2590	5189	2000	2296	2769	848	1806	806	688	1808	1931	1308	1573	908	1081	1974	1912	2150	1226	868	2	10.2%	90%			
SKJ	ATW	CP	Venezuela	PS	t2	a	ab	ab	ab	ab	ab	ab	ab	ab	ab	ab	ab	ab	ab	ab	ab	ab	ab	ab	ab	ab	ab	ab	ab	ab	ab	ab	ab	ab	ab	ab	ab	2			
SKJ	ATW	CP	Brazil	HL	t1							0											5		4	4	159	244	222	369	465	1169	5293	4461	2195	3	1.8%	92%			
SKJ	ATW	CP	Brazil	HL	t2							-1											-1		4	-1	a	-1	-1	-1	a	-1	-1	ab	ab	a	3				
SKJ	ATW	NCO	Cuba	BB	t1	1443	1596	1638	1017	1268	886	1000	1000	651	651	651				624	545	514	536														4	1.7%	94%		
SKJ	ATW	NCO	Cuba	BB	t2	-1	-1	-1	-1	-1	-1	-1	-1	-1	-1	-1	-1	b		-1	-1	-1	-1														4				
SKJ	ATW	CP	Venezuela	BB	t1	777	1952	941	1123	1005	328	224	224	506	282	299	1104	552	950	501	245	201		115	69	441	177	146	124	60	27	39	393	70	41	55	5	1.6%	96%		
SKJ	ATW	CP	Venezuela	BB	t2	a	a	a	ab	ab	ab	ab	ab	ab	ab	ab	ab	ab	ab	ab	ab	ab	ab	ab	ab	ab	ab	ab	ab	ab	ab	ab	ab	ab	ab	ab	ab	5			
SKJ	ATW	CP	Brazil	PS	t1								743	219	240	473	108	116						1119	239	403	213	223		552	9						6	0.6%	96%		
SKJ	ATW	CP	Brazil	PS	t2								-1	-1	a		-1	-1	-1					a	a	a	a	a	a	-1	-1						6				
SKJ	ATW	CP	EU.España	PS	t1		1592	1120	397																													7	0.5%	97%	
SKJ	ATW	CP	EU.España	PS	t2		-1	ac	-1			ac	ac	a	ac		a	ac						ac		abc	abc	abc	abc	abc	ac	abc	ac	-1	ac	a	192	7			
SKJ	ATW	CP	Brazil	LL	t1		0	2	9	6	30	9																										8	0.4%	97%	
SKJ	ATW	CP	Brazil	LL	t2		-1	b	a	-1	-1	-1												38		1													8		
SKJ	ATW	CP	U.S.A.	RR	t1	66	86	49	81	66	21	82	64	86	99	30	49	70	61	74	15	49	52	49	102	102	86	98	91	323	172	92	176	195	76	42	9	0.3%	97%		
SKJ	ATW	CP	U.S.A.	RR	t2	ab	ab	ab	ab	ab	ab	b	ab	ab	ab	ab	ab	ab	abc	abc	abc	abc	abc	abc	ab	abc	ab	ab	ab	ab	ab	ab	ab	ab	ab	ab	ab	ab	9		
SKJ	ATW	NCC	Colombia	UN	t1				789	1583																												10	0.3%	98%	
SKJ	ATW	NCC	Colombia	UN	t2				-1	-1																													10		
SKJ	ATW	NCO	Sta. Lucia	TR	t1																																		11	0.3%	98%
SKJ	ATW	NCO	Sta. Lucia	TR	t2																																		11		
SKJ	ATW	NCC	Colombia	PS	t1				2074																														12	0.3%	98%
SKJ	ATW	NCC	Colombia	PS	t2				-1																														12		

Table 13. SWO-S stock

		T1 Total	17305	13893	13813	16130	18958	21931	18289	18542	14027	15502	15728	15128	14104	12634	13082	13163	14245	15629	12411	12727	12698	11368	10686	9191	9970	10345	10661	10557	10403	10104							
Species	Stock	Status	FlagName	GearGrp	DSet	1990	1991	1992	1993	1994	1995	1996	1997	1998	1999	2000	2001	2002	2003	2004	2005	2006	2007	2008	2009	2010	2011	2012	2013	2014	2015	2016	2017	2018	2019	Rank	%	%cum	
SWO	ATS	CP	EU.España	LL	t1	6166	5760	5651	6974	7937	11290	9622	8461	5832	5758	6388	5789	5741	4527	5483	5402	5300	5283	4073	5183	5801	4700	4852	4184	4113	5059	4992	4654	4404	4224	1	42.0%	42%	
SWO	ATS	CP	Brazil	LL	t1	1696	1312	2609	2013	1571	1970	1892	4100	3844	4721	4579	4075	2903	2917	2984	3780	4430	4243	3413	3386	2926	2984	2831	2381	2892	2594	2935	2406	2792	2859	2	21.8%	64%	
SWO	ATS	CP	Japan	LL	t1	6708	4459	2870	5256	4699	3619	2197	1494	1186	775	790	685	833	924	686	480	1090	2155	1600	1340	1314	1233	1162	684	976	659	637	915	640	658	3	12.8%	77%	
SWO	ATS	NCC	Chinese Taipei	LL	t1	896	1453	1686	846	2829	2876	2873	2562	1147	1168	1303	1149	1164	1254	745	744	377	671	727	612	410	428	496	582	451	554	480	527	472	395	4	7.7%	84%	
SWO	ATS	CP	Uruguay	LL	t1	302	156	210	260	165	499	644	760	889	650	713	789	768	850	1105	843	620	464	370	501	222	179	40	103							5	2.9%	87%	
SWO	ATS	CP	Namibia	LL	t1				22					374	452	607	504	187	549	832	1118	1038	518	25	408	366	22	129	395	225	466	600	881	811	6	2.5%	90%		
SWO	ATS	CP	EU.Portugal	LL	t1					380	389	441		384	381	392	393	380	354	345	493	440	428	271	367	232	263	184	125	252	236	250	466	369	323	7	2.1%	92%	
SWO	ATS	CP	China PR	LL	t1									29	534	344	200	423	353	278	91	300	473	470	291	296	248	316	196	206	328	222	302	355	211	8	1.6%	93%	
SWO	ATS	CP	South Africa	LL	t1					1				240	143	327	547	649	293	295	199	186	207	142	170	145	97	50	171	152	218	164	189	189	251	9	1.2%	95%	
SWO	ATS	CP	Ghana	GN	t1	146	73	69	121	51	103	140	44	106	121	117	531	372	734	343	55	32	65	177	132	116	60	54	37	26	56	36	55	6	10	1.0%	96%		
SWO	ATS	CP	S. Tomé e Príncipe	TR	t1	-1	-1	-1	-1	-1	-1	ab	b	ab	b	ab	ab	ab	ab	ab	ab	ab	ab	a	a	a	a	a	a	a	a	a	a	a	a	11	0.9%	96%	
SWO	ATS	CP	S. Tomé e Príncipe	TR	t2	-1	-1	-1	-1	-1	-1	-1	-1	-1	-1	-1	-1	-1	-1	-1	-1	-1	-1	-1	-1	-1	-1	-1	-1	-1	-1	-1	-1	-1	-1	11			
SWO	ATS	NCO	Cuba	LL	t1	448	209	246	192	452	778	60	60																								12	0.6%	97%
SWO	ATS	NCO	Cuba	LL	t2	a	-1	-1	-1	-1	-1	-1	-1																								12		
SWO	ATS	CP	Senegal	LL	t1																		77	138	195	180	264	162	178	143	97	173	160	92	166	13	0.5%	98%	
SWO	ATS	CP	Senegal	LL	t2																		-1	a	-1	a	a	a	a	a	a	a	a	a	a	-1	13		
SWO	ATS	CP	Korea Rep.	LL	t1	50	147	147	198	164	164	7	18	7	5	10	0	2	24	70	36	94	176	223	10	147	70	65	47	53	5	16	9	15	7	14	0.5%	98%	
SWO	ATS	CP	Korea Rep.	LL	t2	ab	ab	a	a	a	a	a	a	a	a	a	a	a	a	a	a	a	a	a	a	a	a	a	a	a	a	a	a	a	a	14			

Table 19. SPF-E stock

		T1 Total	417	131	255	419	198	207	128	194	192	257	181	81	84	54	51	68	84	66	60	78	128	73	170	95	16	18	15	29	36	60								
Species	Stock	Status	FlagName	GearGrp	DSet	1990	1991	1992	1993	1994	1995	1996	1997	1998	1999	2000	2001	2002	2003	2004	2005	2006	2007	2008	2009	2010	2011	2012	2013	2014	2015	2016	2017	2018	2019	Rank	%	%cum		
SPF	ATE	NCC	Chinese Taipei	LL	t1	8	6	135	263	63	97	41	94	73	112	75	52	62	25	15	25	37	22	2	6	16	9	6	0	0	1	1	1	2	3	1	32.6%	33%		
SPF	ATE	NCC	Chinese Taipei	LL	t2	-1	-1	-1	-1	-1	-1	-1	-1	-1	-1	-1	-1	-1	-1	-1	-1	-1	-1	-1	-1	a	ab	ab	ab	ab	ab	ab	a	a	ab	ab	1			
SPF	ATE	NCO	Mixed flags (FR+ES)	PS	t1	373	107	92	112	98	78	59	68	86	81	60																				2	31.6%	64%		
SPF	ATE	NCO	Mixed flags (FR+ES)	PS	t2	-1	-1	-1	-1	-1	-1	-1	-1	-1	-1	-1																				2				
SPF	ATE	CP	Japan	LL	t1	32	10	27	31	36	26	25	30	22	33	29	20	16	25	36	40	21	36	53	59	49	39	134	85	3	0	4	2	15	11	3	24.7%	89%		
SPF	ATE	CP	Japan	LL	t2	b	-1	b	b	ab	ab	a	a	ab	ab	ab	ab	a	a	a	a	ab	ab	ab	ab	ab	ab	ab	a	a	a	a	a	a	3					
SPF	ATE	CP	EU España	LL	t1			0	12		5	1	1	9	31	17	9	6	5		3	3		2	7	32	12	10	9	13	17	10	13	13	19	4	6.7%	96%		
SPF	ATE	CP	EU España	LL	t2			-1	b		-1	b	b	b	b	b	b	b	b	-1		b	b		-1	b	b	-1	b	b	-1	-1	-1	b	-1	4				
SPF	ATE	CP	EU Portugal	LL	t1																															5	3.3%	99%		
SPF	ATE	CP	EU Portugal	LL	t2																	a	a	a	a	a	a									5				
SPF	ATE	CP	Korea Rep.	LL	t1	4	8	1	1	1	1	3	1																							6	0.5%	99%		
SPF	ATE	CP	Korea Rep.	LL	t2	-1	-1	-1	-1	-1	-1	-1	a																								6			
SPF	ATE	CP	St. Vincent and Grenadines	LL	t1																																7	0.3%	100%	
SPF	ATE	CP	St. Vincent and Grenadines	LL	t2																																7			
SPF	ATE	CP	Senegal	LL	t1																																	8	0.1%	100%
SPF	ATE	CP	Senegal	LL	t2																																	8		
SPF	ATE	CP	China PR	LL	t1																																	9	0.1%	100%
SPF	ATE	CP	China PR	LL	t2																																	9		
SPF	ATE	NCO	NEI (BIL)	LL	t1																																	10	0.1%	100%
SPF	ATE	NCO	NEI (BIL)	LL	t2																																	10		

Table 20. SPF-W stock

			T1 Total	64	83	19	120	122	33	37	7	74	50	97	107	95	79	137	101	256	102	106	62	117	80	58	352	36	62	62	321	138	58								
Species	Stock	Status	FlagName	GearGrp	DSet	1990	1991	1992	1993	1994	1995	1996	1997	1998	1999	2000	2001	2002	2003	2004	2005	2006	2007	2008	2009	2010	2011	2012	2013	2014	2015	2016	2017	2018	2019	Rank	%	%cum			
SPF	ATW	NCC	Chinese Taipei	LL	t1	41	36	16	111	116	19	18	2	64	16	11	24	39	12	11	20	17	20	0		5	12	3	1	3	3	1	2	2	5	1	20.8%	21%			
SPF	ATW	NCC	Chinese Taipei	LL	t2	-1	-1	-1	-1	-1	-1	-1	-1	-1	-1	-1	-1	-1	-1	-1	-1	-1	-1	-1	-1		ab	ab	ab	a	ab	ab	ab	ab	ab	ab	1				
SPF	ATW	CP	EU.España	LL	t1			0	5	1			0	0	22	47	20	5	21			5	14		2	5	10	10	9	11	19	14	259	19	17	2	17.0%	38%			
SPF	ATW	CP	EU.España	LL	t2			-1	b	b		-1	b	b	-1	b	b	b	b	b		b	b		-1	b	b	-1	b	b	-1	-1	b	-1	-1	2					
SPF	ATW	CP	Japan	LL	t1	13	46	1	1	2	3	4	1	8	11	11	3	12	40	41	58	54	25	45	26	57	12	13	3	1			0	0	3	16.2%	54%				
SPF	ATW	CP	Japan	LL	t2	b		-1	b		-1	a	a	a	a	ab	ab	ab	ab	ab	ab	ab	ab	ab	ab	ab	ab	ab	ab	ab	ab	ab	ab	ab	ab	ab	3				
SPF	ATW	CP	Brazil	LL	t1											27	56	39	3				0	5	4			24	4	310			6		4	15.8%	70%				
SPF	ATW	CP	Brazil	LL	t2											-1	-1	-1	a	a	a	a	ab	a	ab	a	a	a	a	a	a	a	a	a	a	4					
SPF	ATW	CP	St. Vincent and Grenadines	LL	t1													82				135	23	13	7	8	5	4	3	3	1						5	14.5%	84%		
SPF	ATW	CP	St. Vincent and Grenadines	LL	t2														a	a	a	a	a	a	a	a	a	a	a	a	a	a	a	a	a	a	5				
SPF	ATW	CP	Venezuela	LL	t1												4	0	3	3	17	5	15	3	14	24	11	24	11	13	32	35	6	10	4	6	7.8%	92%			
SPF	ATW	CP	Venezuela	LL	t2			b	ab	ab	b	a	ab	ab	ab																						6				
SPF	ATW	CP	EU.Portugal	LL	t1																	26	15	44	10	10	0	1									7	4.7%	97%		
SPF	ATW	CP	EU.Portugal	LL	t2																	a	a	a	a	a	a	a	a	a	a	a	a	a	a	a	7				
SPF	ATW	CP	Korea Rep.	LL	t1	9	0	1	2	4	4	10	4																								8	1.1%	98%		
SPF	ATW	CP	Korea Rep.	LL	t2	-1	-1	-1	-1	-1	-1	-1	-1	-1																								8			
SPF	ATW	CP	Brazil	HL	t1																							15	6								9	0.7%	99%		
SPF	ATW	CP	Brazil	HL	t2																																	9			
SPF	ATW	CP	Belize	LL	t1																						12	3									10	0.5%	99%		
SPF	ATW	CP	Belize	LL	t2																																	10			
SPF	ATW	CP	Mexico	LL	t1												1																					11	0.3%	99%	
SPF	ATW	CP	Mexico	LL	t2																																		11		

Table 21. BSH-N region

				T1 Total	3038	4306	3561	9591	8592	8468	7396	29285	26764	26172	28174	21128	20066	23006	21741	22359	23218	26927	30725	35199	37239	38092	36783	37087	36579	39627	44068	39664	33995	27279					
Species	Stock	Status	FlagName	GearGrp	DSet	1990	1991	1992	1993	1994	1995	1996	1997	1998	1999	2000	2001	2002	2003	2004	2005	2006	2007	2008	2009	2010	2011	2012	2013	2014	2015	2016	2017	2018	2019	Rank	%	%cum	
BSH	ATN	CP	EU.España	LL	t1								24497	22504	21811	24112	17362	15666	15975	17314	15006	15464	17038	20788	24465	26094	27988	28666	28562	29041	30078	29019	27316	21685	16314	1	68.9%	69%	
BSH	ATN	CP	EU.España	LL	t2								-1	-1	-1	-1	-1	-1	-1	-1	-1	-1	-1	-1	b	b	b	b	b	b	b	b	b	b		2	16.6%	85%	
BSH	ATN	CP	EU.Portugal	LL	t1	1387	2257	1583	5726	4669	4722	4843	2630	2440	2227	2081	2110	2265	5642	1751	4026	4337	5283	6164	6248	8256	6508	3725	3694	2994	3808	7679	5610	5162	4475	3	6.3%	92%	
BSH	ATN	CP	EU.Portugal	LL	t2	-1	-1	-1	-1	a	a	a	a	a	a	a	a	ab	ab	ab	ab	ab	ab	ab	ab	ab	ab	ab	ab	ab	ab	ab	ab	ab	ab	ab	4	2.2%	94%
BSH	ATN	CP	Japan	LL	t1				1203	1145	618	489	340	357	273	350	386	558	1035	1729	1434	1921	2531	2007	1763	1227	2437	1808	3287	4011	4217	4444	4111	3917	5				
BSH	ATN	CP	Japan	LL	t2				-1	-1	-1	-1	-1	-1	-1	-1	-1	-1	-1	-1	-1	-1	-1	-1	ab	ab	ab	a	a	a	a	a	a	a	a	6	0.9%	95%	
BSH	ATN	CP	Canada	LL	t1	680	774	1277	1702	1260	1494	528	831	612	547	624	581	836	346	965	1134	977	843	0	0	0	0	1	0	1	5	16	32	71	4	7			
BSH	ATN	CP	Canada	LL	t2	-1	-1	-1	-1	-1	a	a	a	a	a	a	a	a	a	a	a	a	a	a	a	a	a	a	a	a	a	a	a	a	a	8			
BSH	ATN	CP	U.S.A.	LL	t1	742	772	186	1146	582	623	608	181	173	96	138	106	68	56	70	68	47	54	138	107	178	238	127	117	147	82	43	42	11	29	9			
BSH	ATN	CP	U.S.A.	LL	t2	-1	-1	-1	-1	-1	-1	-1	-1	-1	-1	-1	-1	-1	b	c					ab	ab	ab	ab	ab	ab	ab	ab	ab	ab	ab	ab	10		
BSH	ATN	CP	Belize	LL	t1																															11			
BSH	ATN	CP	Belize	LL	t2																															12			
BSH	ATN	NCC	Chinese Taipei	LL	t1					487	167	132	203	246	384	165	59																				13		
BSH	ATN	NCC	Chinese Taipei	LL	t2					-1	-1	-1	-1	-1	-1	-1	-1			ab	ab	ab	ab	ab	ab	ab	ab	ab	ab	ab	ab	ab	ab	ab	ab	ab	14	0.7%	96%
BSH	ATN	CP	Panama	LL	t1											9																				15			
BSH	ATN	CP	Panama	LL	t2												-1																			16			
BSH	ATN	CP	Maroc	PS	t1																																17		
BSH	ATN	CP	Maroc	PS	t2																																18		
BSH	ATN	CP	EU.France	UN	t1	130	187	276	322	350	266	278	213	163	399	395	207	221	57	95	120	99	50	46	30	3	6	0	0	105						19	0.5%	98%	
BSH	ATN	CP	EU.France	UN	t2	-1	-1	-1	-1	-1	-1	-1	-1	-1	-1	-1	-1	-1	-1	-1	-1	-1	-1	-1	-1	-1	-1	-1	-1	-1	a						20		
BSH	ATN	CP	Maroc	LL	t1																																21		
BSH	ATN	CP	Maroc	LL	t2																																22		
BSH	ATN	CP	U.S.A.	RR	t1	87	308	214	672	21	19	277	210	252	217	291	39																				23	0.4%	99%
BSH	ATN	CP	U.S.A.	RR	t2	-1	-1	-1	-1	-1	-1	-1	-1	-1	-1	-1	-1	-1																			24		
BSH	ATN	CP	Korea Rep.	LL	t1																																25		
BSH	ATN	CP	Korea Rep.	LL	t2																																26	0.2%	99%
BSH	ATN	CP	China PR	LL	t1												185	104	148																		27	0.2%	99%
BSH	ATN	CP	China PR	LL	t2																																28		

Table 22. BSH-S region

			T1 Total																																																		
			0	8	107	10	2704	3108	4252	10145	8797	10829	12444	14044	12682	14966	14440	20642	20493	23487	23097	23459	27799	35069	26421	20672	26148	22498	25417	28373	34383	34784																					
Species	Stock	Status	FlagName	GearGrp	DSet	1990	1991	1992	1993	1994	1995	1996	1997	1998	1999	2000	2001	2002	2003	2004	2005	2006	2007	2008	2009	2010	2011	2012	2013	2014	2015	2016	2017	2018	2019	Rank	%	%cum															
BSH	ATS	CP	EU.España	LL	t1								5272	5574	7173	6951	7743	5368	6626	7366	6410	8724	8942	9615	13099	13953	16978	14348	10473	11447	10133	10107	11486	13515	18497	1	45.9%	46%															
BSH	ATS	CP	EU.España	LL	t2								-1	-1	-1	-1	-1	-1	-1	-1	-1	-1	-1	-1	-1	b	b	b	b	b	-1	b	b	-1	1																		
BSH	ATS	CP	EU.Portugal	LL	t1								847	867	1336	876	1110	2134	2562	2324	1841	1863	3184	2751	4493	4866	5358	6338	7642	2424	1646	1622	2420	5609	6663	8015	6753	2	17.1%	63%													
BSH	ATS	CP	EU.Portugal	LL	t2								-1	a	a	a	a	a	a	a	a	ab	ab	ab	ab	ab	ab	ab	ab	ab	ab	ab	ab	ab	ab	ab	2																
BSH	ATS	CP	Brazil	LL	t1								743	1103			179	1683	2173	1966	2160	1568	2520	2533	2309	1625	1268	1500	1913	1607	2013	2551	2420	1334	2177	3010	3784	3	8.8%	72%													
BSH	ATS	CP	Brazil	LL	t2								-1	a			-1	ab	a	a	a	a	a	a	a	ab	ab	a	a	a	a	a	a	ab	ab																		
BSH	ATS	CP	Namibia	LL	t1													0	2213	2316	1906	6616	3536	3419	1829	207	2351	2633	1176	1147	2471	2137	2775	1357	3290	ab	ab	4	8.3%	80%													
BSH	ATS	CP	Namibia	LL	t2														-1	ab	ab	ab	ab	ab	ab	ab	ab	a	a	a	a	a	a	ab	ab	ab	4																
BSH	ATS	NCC	Chinese Taipei	LL	t1																																	5	7.9%	88%													
BSH	ATS	NCC	Chinese Taipei	LL	t2																																		5														
BSH	ATS	CP	Japan	LL	t1																																			6	6.8%	95%											
BSH	ATS	CP	Japan	LL	t2																																			6													
BSH	ATS	CP	Uruguay	LL	t1																																				7	1.2%	96%										
BSH	ATS	CP	Uruguay	LL	t2																																				7												
BSH	ATS	CP	South Africa	LL	t1																																				8	0.9%	97%										
BSH	ATS	CP	South Africa	LL	t2																																					8											
BSH	ATS	CP	Ghana	GN	t1																																					9	0.7%	97%									
BSH	ATS	CP	Ghana	GN	t2																																						9										
BSH	ATS	CP	China PR	LL	t1																																						10	0.6%	98%								
BSH	ATS	CP	China PR	LL	t2																																							10									
BSH	ATS	CP	Belize	LL	t1																																								11	0.6%	99%						
BSH	ATS	CP	Belize	LL	t2																																									11							
BSH	ATS	CP	Korea Rep.	LL	t1																																										12	0.3%	99%				
BSH	ATS	CP	Korea Rep.	LL	t2																																											12					
BSH	ATS	CP	Côte d'Ivoire	LL	t1																																											13	0.2%	99%			
BSH	ATS	CP	Côte d'Ivoire	LL	t2																																														13		

Table 23. POR-NE region

				T1 Total	679	467	637	777	1045	749	428	444	371	424	567	506	610	527	578	367	302	421	391	349	21	14	25	10	5	8	9	8	4	0							
Species	Stock	Status	FlagName	GearGrp	DSet	1990	1991	1992	1993	1994	1995	1996	1997	1998	1999	2000	2001	2002	2003	2004	2005	2006	2007	2008	2009	2010	2011	2012	2013	2014	2015	2016	2017	2018	2019	Rank	%	%cum			
POR	ANE	CP	EU.France	UN	t1	551	300	496	633	820	565	267	315	219	240	410	361	461	303	194	276	194	83	83	153												1	64.5%	64%		
POR	ANE	CP	EU.France	UN	t2	-1	-1	-1	-1	-1	-1	-1	-1	-1	-1	-1	-1	-1	-1	-1	-1	-1	-1	-1	-1	-1											1				
POR	ANE	CP	EU.Denmark	UN	t1	46	85	80	91	93	86	72	69	85	107	73	76	42	21	20	4	3	2	1		0											2	9.9%	74%		
POR	ANE	CP	EU.Denmark	UN	t2	-1	-1	-1	-1	-1	-1	-1	-1	-1	-1	-1	-1	-1	-1	-1	-1	-1	-1	-1	-1		a										2				
POR	ANE	CP	EU.France	LL	t1													185					271	184	46		1										3	6.4%	81%		
POR	ANE	CP	EU.France	LL	t2													-1					-1	-1	-1		-1										3				
POR	ANE	CP	EU.España	LL	t1	26	47	15	21	52	19	41	25	25	18	13	24	54	27	11	14	34	8	41	77		0										4	5.5%	86%		
POR	ANE	CP	EU.España	LL	t2	-1	-1	-1	-1	-1	-1	-1	-1	-1	-1	-1	-1	-1	-1	-1	-1	-1	-1	-1	-1	-1		-1									4				
POR	ANE	CP	Norway	UN	t1	43	32	41	24	24	26	28	17	27	32	22			19					1	8	9	6	12	11	17								5	3.7%	90%	
POR	ANE	CP	Norway	UN	t2	-1	-1	-1	-1	-1	-1	-1	-1	-1	-1	-1	-1	-1	-1	-1	-1	-1	-1	-1	-1	-1	-1	-1	-1	-1	-1	-1	-1	-1	-1	-1	-1	5			
POR	ANE	CP	EU.Portugal	LL	t1	2	1	0	1	1	1	1	1	1	1	0	7	4	10	101	5	14	6	0	3	17	7	0	0									6	2.1%	92%	
POR	ANE	CP	EU.Portugal	LL	t2	-1	-1	-1	-1	-1	-1	-1	-1	-1	-1	-1	-1	-1	-1	a	a	a	a	a	a	a	a	a	a	a	a	a	a	a	a	a	a	6			
POR	ANE	NCO	Faroe Islands	LL	t1					48	44	8	9	7	10	13	8	10	14	5	19	21																6			
POR	ANE	NCO	Faroe Islands	LL	t2					-1	-1	-1	-1	-1	-1	-1	-1	-1	-1	-1	-1	-1	-1	-1	-1	-1	-1	-1	-1	-1	-1	-1	-1	-1	-1	-1		7	2.0%	94%	
POR	ANE	CP	EU.United Kingdom	UN	t1	9					0					1	6	8	12	10	25	24																8	0.9%	95%	
POR	ANE	CP	EU.United Kingdom	UN	t2	-1					-1					-1	-1	-1	-1	-1	-1	-1	-1	-1	-1												8				
POR	ANE	CP	Norway	GN	t1													6	3				8	26	1	2	2											9	0.7%	96%	
POR	ANE	CP	Norway	GN	t2														-1	-1	-1	-1	-1	-1	-1												9				
POR	ANE	CP	EU.Ireland	UN	t1											8	2	6	3	11	18	3	4	8	7	0	0											10	0.7%	96%	
POR	ANE	CP	EU.Ireland	UN	t2											-1	-1	-1	-1	-1	-1	-1	-1	-1	-1	-1	-1	-1	-1	-1	-1	-1	-1	-1	-1	-1		10			
POR	ANE	CP	EU.France	TW	t1																24			22	14		1	3										11	0.6%	97%	
POR	ANE	CP	EU.France	TW	t2																-1			-1	-1													11			
POR	ANE	CP	EU.United Kingdom	GN	t1																	8	10	14	13	10													12	0.5%	97%
POR	ANE	CP	EU.United Kingdom	GN	t2																a	a	a	-1	a													12			

Table 25. POR-SE region

		T1 Total		0	0	0	0	0	0	0	3	19	1	6	0	1	1	9	3	1	0	5	30	37	6	7	26	29	38	3	1	0	4	0				
Species	Stock	Status	FlagName	GearGrp	DSet	1990	1991	1992	1993	1994	1995	1996	1997	1998	1999	2000	2001	2002	2003	2004	2005	2006	2007	2008	2009	2010	2011	2012	2013	2014	2015	2016	2017	2018	2019	Rank	%	%cum
POR	ASE	CP	Japan	LL	t1							3	13										5	29	25	6	7	25	15	13	3	1	0	1	63.3%	63%		
POR	ASE	CP	Japan	LL	t2							-1	-1										-1	-1	a	a	a	a	a	a	a	a	a	a	2	13.6%	77%	
POR	ASE	CP	EU.España	LL	t1							2	1	2			1	1	9	3			0	1	11										3	10.8%	88%	
POR	ASE	CP	EU.España	LL	t2							-1	-1	-1			-1	-1	-1	-1			-1	-1	-1									4	7.7%	95%		
POR	ASE	CP	Ghana	PS	t1																														5	3.4%	99%	
POR	ASE	CP	Ghana	PS	t2																														6	0.6%	99%	
POR	ASE	CP	Korea Rep.	LL	t1																														7	0.4%	100%	
POR	ASE	CP	Korea Rep.	LL	t2																														8	0.2%	100%	
POR	ASE	NCO	Benin	UN	t1							4	0	4																					9	0.0%	100%	
POR	ASE	NCO	Benin	UN	t2							-1	-1	-1																					10	0.0%	100%	
POR	ASE	NCC	Chinese Taipei	LL	t1																														11	0.0%	100%	
POR	ASE	NCC	Chinese Taipei	LL	t2																															12	0.0%	100%
POR	ASE	CP	EU.Portugal	LL	t1																															13	0.0%	100%
POR	ASE	CP	EU.Portugal	LL	t2																															14	0.0%	100%
POR	ASE	CP	Guinea Ecuatorial	HL	t1																															15	0.0%	100%
POR	ASE	CP	Guinea Ecuatorial	HL	t2																															16	0.0%	100%
POR	ASE	CP	EU.España	PS	t1																															17	0.0%	100%
POR	ASE	CP	EU.España	PS	t2																															18	0.0%	100%
POR	ASE	CP	Curaçao	PS	t1																															19	0.0%	100%
POR	ASE	CP	Curaçao	PS	t2																															20	0.0%	100%
POR	ASE	CP	Guatemala	PS	t1																															21	0.0%	100%
POR	ASE	CP	Guatemala	PS	t2																															22	0.0%	100%
POR	ASE	CP	El Salvador	PS	t1																															23	0.0%	100%
POR	ASE	CP	El Salvador	PS	t2																															24	0.0%	100%
POR	ASE	CP	Panama	PS	t1																															25	0.0%	100%
POR	ASE	CP	Panama	PS	t2																															26	0.0%	100%

Table 26. POR-SW region

		T1 Total	328	256	385	213	284	170	327	159	261	172	214	141	181	187	105	133	122	143	55	26	10	14	12	0	0	0	0	0	0	0	0	0	0	0							
Species	Stock	Status	FlagName	GearGrp	DSet	1990	1991	1992	1993	1994	1995	1996	1997	1998	1999	2000	2001	2002	2003	2004	2005	2006	2007	2008	2009	2010	2011	2012	2013	2014	2015	2016	2017	2018	2019	Rank	%	%cum					
POR	ASW	NCC	Chinese Taipei	LL	t1	142	73	192	85	146	57	168	65	170	73	84	29	93	95	39	43	47	99		2											0	1	43.6%	44%				
POR	ASW	NCC	Chinese Taipei	LL	t2	-1	-1	-1	-1	-1	-1	-1	-1	-1	-1	-1	-1	-1	-1	-1	-1	-1	-1	-1		a											1						
POR	ASW	CP	Brazil	LL	t1	95	81	128	60	32	49	33	36	38	58	60	67	74	49	37	52	32	23														2	25.8%	69%				
POR	ASW	CP	Brazil	LL	t2	-1	-1	-1	-1	-1	-1	-1	-1	-1	-1	-1	-1	-1	-1	-1	-1	-1	-1	-1														2					
POR	ASW	CP	Uruguay	LL	t1	27	18	24	7	5	3	19	5	14	3	4	20	8	34	8	28	34	3	40	14	6	12	12									3	8.9%	78%				
POR	ASW	CP	Uruguay	LL	t2	-1	-1	-1	-1	-1	-1	-1	-1	-1	-1	-1	-1	-1	-1	-1	-1	-1	-1	a	a	b	a											3					
POR	ASW	CP	EU.España	LL	t1	1	13	12	32	35	43	28	25	1	12	7	13	1	0	0	0	3	5	3	2													4	6.0%	84%			
POR	ASW	CP	EU.España	LL	t2	-1	-1	-1	-1	-1	-1	-1	-1	-1	-1	-1	-1	-1	-1	-1	-1	-1	-1	-1	-1													4					
POR	ASW	NCO	NEI (Flag related)	LL	t1	13	8	14	10	22	8	46	23	37	11	15	3	1																				5	5.4%	90%			
POR	ASW	NCO	NEI (Flag related)	LL	t2	-1	-1	-1	-1	-1	-1	-1	-1	-1	-1	-1	-1	-1	-1	-1	-1	-1	-1	-1	-1													5					
POR	ASW	CP	Japan	LL	t1	37	48	12	13	14	6	6	1	1	1	7	4	3	2	11	3	3	4	4	12	10	2											6	5.1%	95%			
POR	ASW	CP	Japan	LL	t2	-1	-1	-1	-1	-1	-1	-1	-1	-1	-1	-1	-1	-1	-1	-1	-1	-1	-1	-1	-1	a	a												6				
POR	ASW	CP	Panama	LL	t1	8	14	2	6	24	4	21	3		0	1																						7	2.1%	97%			
POR	ASW	CP	Panama	LL	t2	-1	-1	-1	-1	-1	-1	-1	-1		-1	-1																							7				
POR	ASW	CP	China PR	LL	t1				0	1	0					13	36	4																					8	1.9%	99%		
POR	ASW	CP	China PR	LL	t2				-1	-1	-1					-1	-1	-1																						8			
POR	ASW	CP	Korea Rep.	LL	t1		3	3	1	1	2	1	6	1																										9	0.6%	99%	
POR	ASW	CP	Korea Rep.	LL	t2	-1	-1	-1	-1	-1	-1	-1	-1	-1																											9		
POR	ASW	CP	EU.Portugal	LL	t1									1				1	1	1	4	1	1	2																10	0.3%	100%	
POR	ASW	CP	EU.Portugal	LL	t2									-1				-1	-1	-1	a	a																		10			
POR	ASW	CP	Philippines	LL	t1										0	0	0	0	0	0	1	3	1																		11	0.1%	100%
POR	ASW	CP	Philippines	LL	t2										-1	-1	-1	-1	-1	-1	-1	-1	-1	-1																	11		

Table 27. SMA-N region

				T1 Total	2389	2296	3233	4114	3659	5306	5306	3534	3845	2858	2587	2677	3426	3987	4000	3695	3574	4158	3800	4541	4782	3720	4437	3603	3467	3281	3356	3119	2373	1863						
Species	Stock	Status	FlagName	GearGrp	DSet	1990	1991	1992	1993	1994	1995	1996	1997	1998	1999	2000	2001	2002	2003	2004	2005	2006	2007	2008	2009	2010	2011	2012	2013	2014	2015	2016	2017	2018	2019	Rank	%	%cum		
SMA	ATN	CP	EU.España	LL	t1	1537	1390	2145	1964	2164	2209	3294	2416	2223	2051	1561	1684	2047	2068	2088	1751	1918	1814	1895	2216	2091	1667	2308	1509	1481	1362	1574	1784	1165	866	1	52.6%	53%		
SMA	ATN	CP	EU.España	LL	t2	-1	-1	-1	-1	-1	-1	-1	-1	-1	-1	-1	-1	-1	-1	-1	-1	-1	-1	-1	-1	b	b	b	b	b	b	b	b	b	b	2	17.7%	70%		
SMA	ATN	CP	EU.Portugal	LL	t1	193	314	220	796	649	657	691	354	307	327	318	378	415	1249	399	1109	951	1540	1033	1169	1432	1045	1023	817	209	213	257	270	268	284	2				
SMA	ATN	CP	EU.Portugal	LL	t2	-1	-1	-1	-1	-1	a	a	a	a	a	a	a	a	a	a	a	ab	ab	ab	ab	ab	ab	ab	ab	ab	ab	ab	ab	ab	ab	3				
SMA	ATN	CP	U.S.A.	RR	t1	268	210	250	667	317	1422	232	164	148	69	290	214	248	0	336	282	257	158	156	163	183	180	236	227	816	480	168	192	125	25	3	7.9%	78%		
SMA	ATN	CP	U.S.A.	RR	t2	-1	-1	-1	-1	-1	-1	-1	-1	-1	-1	-1	-1	-1	-1	-1	-1	-1	-1	-1	-1	-1	-1	-1	-1	-1	-1	-1	-1	-1	4					
SMA	ATN	CP	Maroc	LL	t1													147	169	215	220	151	283	476	636	390	380	616	580	807	1000	320	423	357	4	6.7%	85%			
SMA	ATN	CP	Maroc	LL	t2													-1	-1	-1	-1	-1	-1	-1	-1	-1	-1	-1	-1	-1	-1	-1	-1	-1	5					
SMA	ATN	CP	Japan	LL	t1	221	157	318	425	214	592	790	258	892	120	138	105	438							82	131	98	116	53	56	33	69	45	74	89	20	34	5	6.0%	91%
SMA	ATN	CP	Japan	LL	t2	-1	-1	-1	-1	-1	-1	-1	-1	-1	-1	-1	-1	-1	-1	-1	-1	-1	-1	-1	-1	-1	-1	-1	-1	-1	-1	-1	-1	-1	-1	6				
SMA	ATN	CP	U.S.A.	LL	t1	146	176	273	249	269	259	166	179	146	124	123	135	123	105	61	63	69	74	64	64	39	50	39	37	28	35	53	84	82	109	54	62	7	4.2%	95%
SMA	ATN	CP	U.S.A.	LL	t2	-1	-1	-1	-1	-1	-1	-1	-1	-1	-1	-1	-1	-1	-1	-1	-1	-1	-1	-1	-1	-1	-1	-1	-1	-1	-1	-1	-1	-1	-1	8				
SMA	ATN	CP	Canada	LL	t1						93	56	99	55	54	59	60	61	63	69	74	64	64	39	50	39	37	28	35	53	84	82	109	54	62	7	1.4%	96%		
SMA	ATN	CP	Canada	LL	t2						-1	a	a	a	a	a	a	a	a	a	a	a	a	a	abc	ab	ab	ab	ab	ab	ab	ab	ab	ab	ab	ab	7			
SMA	ATN	NCC	Chinese Taipei	LL	t1	9	39	16	9	29	32	45	42	47	75	56	47	53	37	70	68	40	6	23	11	14	13	15	8	4	15	8	1	3	1	8	0.8%	97%		
SMA	ATN	NCC	Chinese Taipei	LL	t2	-1	-1	-1	-1	-1	-1	-1	-1	-1	-1	-1	-1	-1	-1	-1	-1	-1	-1	-1	-1	-1	-1	-1	-1	-1	-1	-1	-1	-1	-1	-1	8			
SMA	ATN	CP	Maroc	PS	t1																																9	0.7%	98%	
SMA	ATN	CP	Maroc	PS	t2																																9			
SMA	ATN	CP	Belize	LL	t1																																10	0.3%	98%	
SMA	ATN	CP	Belize	LL	t2																																10			

Table 28. SMA-S region

		T1 Total	1255	1062	1183	1743	2182	3100	2395	2187	2008	1606	2588	2107	2103	3235	2526	3259	3036	2786	1881	2063	2486	3258	2905	2183	3274	2774	2765	2786	3158	2309									
Species	Stock	Status	FlagName	GearGrp	DSet	1990	1991	1992	1993	1994	1995	1996	1997	1998	1999	2000	2001	2002	2003	2004	2005	2006	2007	2008	2009	2010	2011	2012	2013	2014	2015	2016	2017	2018	2019	Rank	%	%cum			
SMA	ATS	CP	EU.España	LL	t1	552	327	421	772	552	1084	1482	1356	984	861	1090	1235	811	1158	703	584	664	654	628	922	1192	1535	1207	1083	1077	862	882	1049	1044	1090	1	38.6%	39%			
SMA	ATS	CP	EU.España	LL	t2	-1	-1	-1	-1	-1	-1	-1	-1	-1	-1	-1	-1	-1	-1	-1	-1	-1	-1	-1	-1	-1	-1	-1	-1	-1	-1	-1	-1	-1	-1	1					
SMA	ATS	CP	Namibia	LL	t1										1			459	375	509	1415	1243	1002	295	23	306	328	554	9	950	661	799	194	980	2	14.0%	53%				
SMA	ATS	CP	Namibia	LL	t2										-1			a		-1	ab	ab	ab	ab	ab	ab	a	ab	a	a	a	ab	ab	ab	2						
SMA	ATS	CP	Japan	LL	t1	538	506	460	701	1369	1617	514	244	267	151	264	56	133	118	398						72	115	108	103	132	291	114	182	109	77	96	93	55	3	12.3%	65%
SMA	ATS	CP	Japan	LL	t2	-1	-1	-1	-1	-1	-1	-1	-1	-1	-1	-1	-1	-1	-1	-1	-1	-1	-1	-1	-1	-1	-1	-1	-1	-1	-1	-1	-1	-1	-1	-1	3				
SMA	ATS	CP	EU.Portugal	LL	t1					92	94	165	116	119	388	140	56	625	13	242	493					375	321	502	336	409	176	132	127	158	393	503	300	243	4	9.0%	74%
SMA	ATS	CP	EU.Portugal	LL	t2					-1	-1	a	a	a	a	a	a	a	a	a	a	a	a	a	a	a	a	a	a	a	a	a	a	a	a	a	4				
SMA	ATS	CP	Brazil	LL	t1	103	79	158	122	95	119	83	190	233	27	219	409	226	a	283	a	177	426	ab	ab	ab	ab	ab	ab	ab	ab	ab	ab	ab	ab	ab	ab	739	5	8.6%	83%
SMA	ATS	CP	Brazil	LL	t2	-1	-1	-1	-1	-1	-1	-1	-1	-1	-1	-1	-1	-1	-1	-1	-1	-1	-1	-1	-1	-1	-1	-1	-1	-1	-1	-1	-1	-1	-1	-1	-1	5			
SMA	ATS	CP	South Africa	LL	t1			64	43	23	46	36	29	168	66	103	68	12	115	101	111	86	224	137	146	152	218	108	250	476	613	339	305	244	110	6	6.1%	89%			
SMA	ATS	CP	South Africa	LL	t2			-1	-1	-1	-1	-1	-1	-1	-1	-1	-1	-1	-1	-1	-1	-1	-1	-1	-1	-1	-1	-1	-1	-1	-1	-1	-1	-1	-1	-1	-1	6			
SMA	ATS	NCC	Chinese Taipei	LL	t1	36	80	44	31	65	87	117	139	130	198	162	120	146	83	180	226	166	147	124	117	144	204	158	157	161	154	95	88	66	44	7	5.1%	94%			
SMA	ATS	NCC	Chinese Taipei	LL	t2	-1	-1	-1	-1	-1	-1	-1	-1	-1	-1	-1	-1	-1	-1	-1	-1	-1	-1	-1	-1	-1	-1	-1	-1	-1	-1	-1	-1	-1	-1	-1	-1	7			
SMA	ATS	CP	China PR	LL	t1				34	45	23	27	19	74	126	305	22	208	260	68	45	70	77	6	24	32	29	8	9	5	3	1					8	2.1%	96%		
SMA	ATS	CP	China PR	LL	t2				-1	-1	-1	-1	-1	-1	-1	-1	-1	-1	-1	-1	-1	-1	-1	-1	-1	-1	-1	-1	-1	-1	-1	-1	-1	-1	-1	-1	-1	-1	8		
SMA	ATS	CP	Uruguay	LL	t1	26	13	20	28	12	17	26	20	23	21	35	40	38	188	249	146	68	36	41	106	23	76	36	1									9	1.8%	98%	
SMA	ATS	CP	Uruguay	LL	t2	-1	-1	-1	-1	-1	-1	-1	-1	-1	-1	-1	-1	-1	-1	-1	-1	-1	-1	-1	-1	-1	-1	-1	-1	-1	-1	-1	-1	-1	-1	-1	-1	-1	9		
SMA	ATS	CP	Côte d'Ivoire	GN	t1		9	13	10	20	13	15	23	10	10	9	15	15	30	15	14	16	25				19	33	19	11	13	161	4	8	10	0.7%	98%				
SMA	ATS	CP	Côte d'Ivoire	GN	t2																																10				

Appendix 2. Summary of FAD information received in FAD Management Plans and ST08 forms for 2019 (some datasets could require revisions).
 Appendice 2. Résumé des informations sur les DCP consignées dans les plans de gestion des DCP et les formulaires ST08 au titre de 2019 (certains jeux de données sont en attente de révision).
 Apéndice 2. Resumen de la información sobre DCP recibida en los planes de ordenación de DCP y en los formularios ST08 para 2019 (algunos conjuntos de datos pendientes de revisión).

Tropical Tunas Fishing Management Plan (preliminary)	FAD Management Plan	Reported 2019 Data on ST-08
Belize	Belize	Belize
Brazil	Curacao	Cabo Verde
China	EU.España	Curacao
Chinese-Taipei	EU.Francia	El Salvador
Curacao	Ghana	Eu.Espana
EU.España	Senegal	EU.Francia
EU.Francia	St Vincent &G	Ghana
Ghana	UK-OT	Guatemala
Guatemala		Mexico
Japan		UK-OT
Korea		
Russia		
Senegal		
St Vincent &G		
UK-OT		
USA		

Appendix 3. Summary of Domestic Observer Program information

Appendice 3. Résumé de l'information sur les Programmes Nationaux d'Observateurs.

Apéndice 3. Resumen de la información sobre los Programas nacionales de observadores.

CPC	Start year	Fisheries monitored (1 or more)	Coverage	Percent Coverage	Coverage based on
China	2009	LL		0.108	No. of hooks
EU.Malta	2008	LL		0.2	No. Of Vessels
EU.Cypruss	2006	LL		0.02	No. Of annual trips
Maroc	2018	LL,TP		51	No. Of Vessels
Belize	2018	LL, PS		0.1	No. of Vessels
Canada	2018	LL, RR, GN, TW	8, 0.6		No. of sets (LL)
Curacao	2018	PS		100	No. Trips
EU.France	2018	PS		81	No. of sets
Turkey	2012	LL		25	No. Of annual trips
EU.Portugal Madeira	2018	BB, HL		11	No. Of Vessels
EU. Portugal	2018	LL, TP		7.1	No. of sets
Ghana	2006	PS, BB		67	No. of vessels
Korea	2002	LL		22	Other
Mexico	2018	LL		100	Other
El Salvador	2018	PS		100	No. of vessels
Chinese Taipei	2018	LL		10	Days at sea
Tunisia	2012	PS,LL		78	Pcatch
Turkey	2018	LL		25	No. of annual trips
USA	1992	LL		8	No. of sets predefined strata per quarter
EU.Italy	2016	LL, TP	-		No. of vessels
Japan	1992	LL		7	Other
Capo Verde	2005	PS			
EU.Greece	NA	LL		3	
Norway	2018	LL, PS		18,100	No. Trips
Russia	2018	TW		10	No. Vessels
Chinese Tai Pei	2002	LL		4	Days at sea
Algeria	2019	LL		25	Percent of the catch

Appendix 4. CPCs reporting in form ST09-DomObPrg data for 2019.

Appendice 4. CPC déclarant dans le formulaire ST09-DomObPrg les données pour 2019.

Apéndice 4. CPC que comunicaron en el formulario ST09-DomObPrg datos de 2019.

Alegeria
Belize
Brazil
Canada
Cape Verde
China PR
Chinese Taipei
Curaçao
El Salvador
EU.Cyprus
EU.España
EU.France
EU.France St. Pierre et Miquelon
EU.Greece
EU.Italy
EU.Portugal
Japan
Korea Rep.
Mexico
Morrocco
Norway
Russian Federation
Tunisie
Turkey
United Kingdom
U.S.A.

Appendix 5. Summary of reasons submitted by CPCs for not completing form C of ST09.

Appendice 5. Résumé des motifs présentés par les CPC pour ne pas remplir le formulaire C de ST09.

Apéndice 5. Resumen de las razones presentadas por las CPC para no cumplimentar el formulario C de ST09.

FlagName	FlagCode	ST09C Reason
Belize	BLZ	"we do not have the relevant information need to complete this form we are unable to provide same"
Brazil	BRA	"Information on ST09C is not available."
EU.Greece	EU.GRC	"we would like to point out that our observer program on the swordfish fisheries is currently focusing on recording undersized catches of the target species. The fishery is largely monospecific and catches of other species were not systematically recorded. That is why the optional ST09C subform was not completed. However, we plan to enhance our observer program and record all species in the future"
Japan	JPN	ST09C was not provided because ST09A and ST09B covered monitoring role of the data collection required by recommendation 10-09 paragraph 1, 11-09 paragraph 1, and 16-14 paragraph 10f, such as species, discards, dead or alive and location of bycatch species. Sharing biological data could be accepted under the collaboration framework between CPCs, if required.
Korea Rep.	KOR	All weights/lengths data collected by observers onboard in 2019 were submitted by the forms of ST04 and ST05 by species, and there is no biological sampling(genetic, otolith, stomach, gonad etc.) in 2019.
Mexico	MEX	Todos los organismos capturados, subidos a bordo, y embodegados son muestreados para datos biométricos (talla, peso vivo, peso eviscerado, sexo y madurez sexual por especie) debido a que se cuenta con un programa de observadores a bordo en todos los viajes de pesca, y cuyos datos se presentan en los Formularios ST04 y ST05. No obstante, en 2019 no se llevó a cabo la toma de muestras genéticas, otolitos, estomacales, gónadas, etc.
Turkey	TUR	The form was left blank since no sex, genetic, otolith, stomach or gonad data was recorded during monitoring program.
U.S.A.	USA	Filling up the ST09C subform is 'optional' and CPCs that choose not to provide that information are not required to provide an explanation.
Chinese Taipei (foreign obs.)	TAI.Obs	The data in subform ST09C is still under preparation and review. Since ST09C is optional, relevant data is therefore not provided.