



**RECOVERY AND ANALYSIS OF INDIVIDUAL WEIGHTS OF GIANT  
BLUEFIN TUNA CAUGHT BY THE MOROCCAN HAND LINE  
FISHERY IN THE STRAIT OF GIBRALTAR**

*SHORT TERM CONTRACT FOR THE DATA RECOVERY PLAN (GBYP/2/2011) OF  
THE ATLANTIC-WIDE RESEARCH PROGRAM ON BLUEFIN TUNA  
(ICCAT GBYP PHASE II)*

***DRAFT FINAL REPORT***



***By:*** Nouredine Abid

***In collaboration with:***

*El Mostapha Talbaoui*

Said Benchoucha

Aziz Lamtai

Chaib El Fanichi

***September 22, 2011***

## ***INDEX***

1. INTRODUCTION .....	4
2. DESCRIPTION OF THE WORK CARRIED OUT .....	5
3. DESCRIPTION OF THE DATA SETS.....	5
4. MATERIAL AND METHODS.....	9
5. RESULTS AND DISCUSSIONS.....	9
6. REFERENCES.....	10
7. APPENDIX.....	21

## ***SUMMARY***

In the frame work of this short contract, 1986 individual weights from the Moroccan handline fishery targeting bluefin tuna in the Strait of Gibraltar could be recovered for the period from 1999 to 2009.

The analysis of data indicated that most of fish are from 180 and 250 cm, their age is comprised between 7 and 16 years old. The age structure of catches has remained relatively stable during the last decade. However the sharp decline in the catches since 2005 could be related to the change in the behavior of fish which could be in turn linked either to the variability in the environmental factors or to the predation phenomenon by the killing wale (*Orcinus orca*).

## 1. INTRODUCTION

Improving the basic data of the main bluefin tuna fisheries is one of the major objectives of the wide Atlantic bluefin tuna research program (GBPYP) established by ICCAT in 2010. This will make the SCRS stock assessments results for this species more reliable and, thus the management recommendations based on these assessments will become more credible and efficient.

The considerable changes operated in the Mediterranean bluefin tuna fisheries, especially the rapid expansion of the farming activities since 1997, have resulted in a remarkable deterioration of the size and biological data in the ICCAT database, as the purseiners which are involved in these activities take the most part of the total catches for the eastern stock of this species.

The recovery of this kind of data from other fisheries (traps, artisanal) that still continue indicating on the eastern stock status will contribute to compensate this noticeable lack of data.

The present work contributes in achieving this objective by collecting individual weights of giant bluefin tuna caught by the Moroccan handline fishery operating in the Strait of Gibraltar during the last decade. These data will be of great scientific interest, as they will be used in analytical models for the future stock assessment work for this species.

## **2. DESCRIPTION OF THE WORK CARRIED OUT :**

The Moroccan handline fishery targeting giant bluefin tuna in the Strait of Gibraltar is an artisanal activity that started in 1994. The artisanal fleet involved in this fishery is mainly based in 3 fishing sites named “Ksar Sghir”, “Diky” and “Ferdioua” (**Figure 1**). The fleet is made up of more than 100 small vessels which are 5 - 6 m and 15 - 25 HP.

Currently the BFT fishing season is short, occurring in the summer time (July-September) when the fish is undertaking its feeding migration from the Mediterranean Sea to the Atlantic Ocean. The fishing area is well known by fishermen and located at depth of up to 500 m.

Due to its artisanal character, it is difficult to have a reliable and complete data for this fishery. From the three main landing sites, only the port of “Ksar Sghir” which has been equipped with a fish market since 2002 and where the bluefin tuna catch statistics are recorded on a daily basis during the whole fishing season. The fish is sold in auction by dealers coming from the port of Tangier. For the two other sites, there are neither fishing facilities nor a fish market for recording the statistic data.

During the period from June 1<sup>st</sup> to June 30<sup>th</sup>, 2011, many travel duties were carried out by a scientific team from the regional centre of Tangier to recover all the historical data related to this artisanal fishery. For this study, there were two main sources of data depending on the time series. From 1999 to 2001, the bluefin tuna individual weights data were collected from a dealer based at the port of Tangier. For the period 2002- 2009, individual weights data came from the fish market of the port of “Ksar Sghir”.

## **3. DESCRIPTION OF THE DATA SETS :**

The bluefin tuna data recovered in the frame work of this offer will be reported for the first time to the ICCAT Secretariat. The database shows the number of fish caught by 1kg (RW) weight class, by month and by year except for the year 2008 for which the catch was null. The fishing area is 1x1 square.

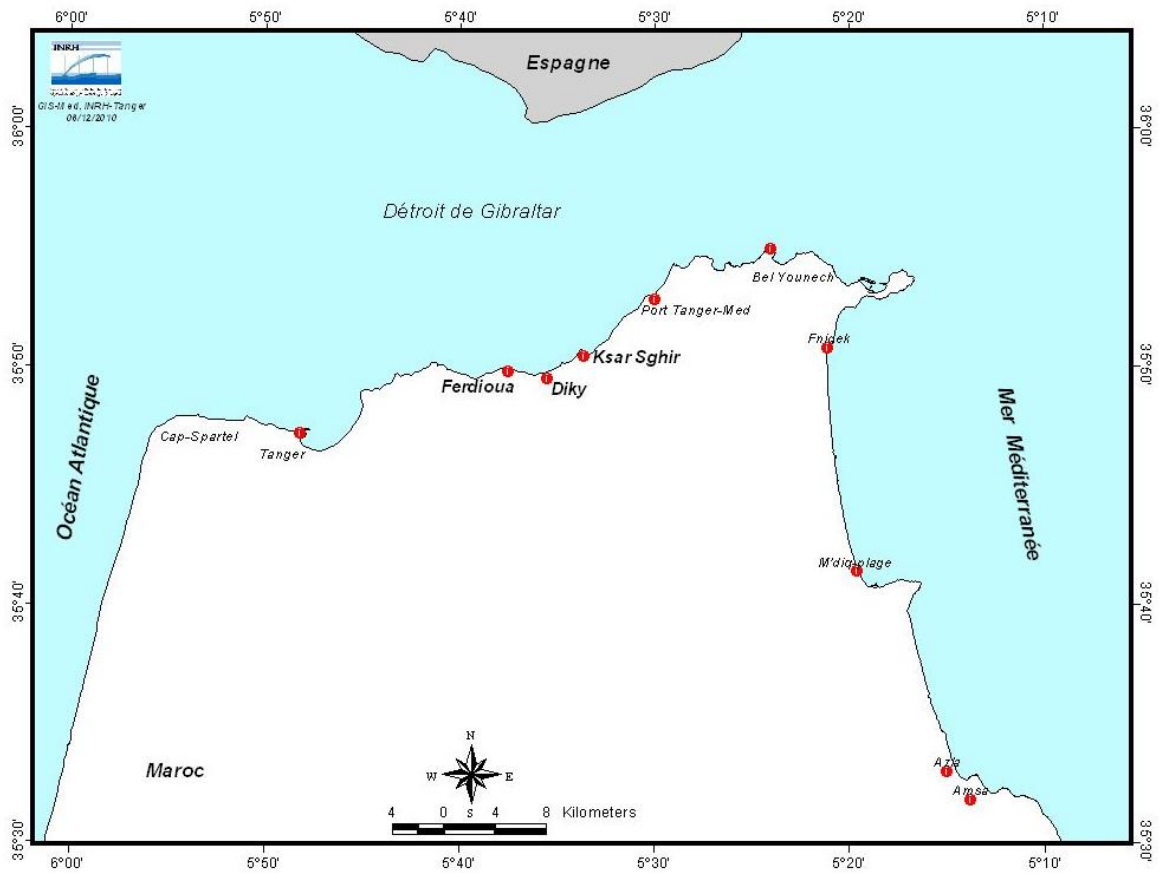
A total of 1986 bluefin tuna individual weights were recovered for the period 1999-2009. The **table 1** summarizes the number of fish per year and per month.

The data are more important in the earlier years of the time series (1999-2004) due to the high catches recorded during that period. Since 2005, there has been a few data because of the low catches of this species (**Figure 2**). This sharp decline in the catches could be related to the change in the behavior of fish which could be in turn linked either to the variability in the environmental factors or to the predation phenomenon by the killing wale (*Orcinus orca*)

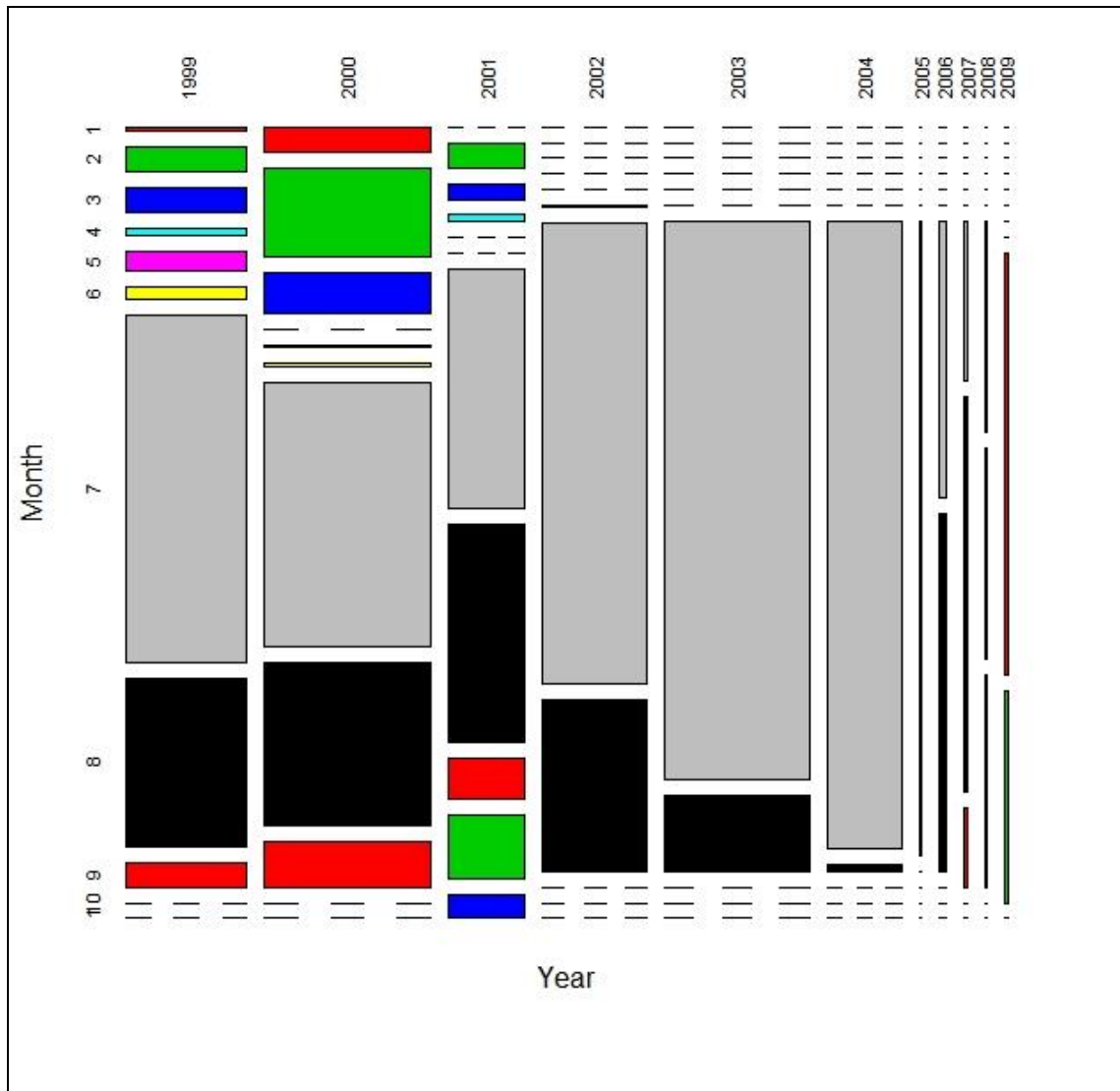
Furthermore, the fishing season of bluefin tuna became shorter since 2002, and hasn't lasted more than 3 months (July - September) (**Figure 2**). This could be explained by the fact that the fish isn't available anymore over the year in the fishing area.

**Table 1:** Number of fish per month and per year for the period 1999-2009

<i>Year/Month</i>	<i>1</i>	<i>2</i>	<i>3</i>	<i>4</i>	<i>5</i>	<i>6</i>	<i>7</i>	<i>8</i>	<i>9</i>	<i>10</i>	<i>11</i>	<i>Total</i>
<b>1999</b>	2	14	13	4	11	6	187	91	13			<b>341</b>
<b>2000</b>	19	65	30		1	3	194	121	33			<b>466</b>
<b>2001</b>		9	5	2			82	75	14	22	8	<b>217</b>
<b>2002</b>						1	215	80				<b>296</b>
<b>2003</b>							358	49				<b>407</b>
<b>2004</b>							209	2				<b>211</b>
<b>2005</b>							5					<b>5</b>
<b>2006</b>							10	13				<b>23</b>
<b>2007</b>							2	5	1			<b>8</b>
<b>2009</b>									8	4		<b>12</b>
<b>Total</b>	<b>21</b>	<b>88</b>	<b>48</b>	<b>6</b>	<b>12</b>	<b>10</b>	<b>1262</b>	<b>436</b>	<b>69</b>	<b>26</b>	<b>8</b>	<b>1986</b>



**Figure 1.** Map showing the location of the main Moroccan landing sites (Ferdioua, Diky and Ksar sghir) of bluefin tuna in the strait of Gibraltar



**Figure 2.** Mosaic plot showing the distribution of the observations per year and per month



## 4. MATERIAL AND METHODS :

For the size frequencies analysis, the individual weights (RW) of bluefin tuna were converted into their corresponding fork lengths using a specific relationship (Abid and Idrissi, 2007) that takes into account the condition factor of fish. The bluefin tuna caught by this fishery mainly from July to September is characterized by a lower condition factor compared with that caught by Atlantic traps (April-June) (Srour and Abid, 2005, Srour et al, 2003).

In order to estimate the age of fish, the inverse Van Bertalanfy equation was used. The growth parameters used are those currently adopted by the SCRS for the East Atlantic Stock (Cort, 1991).

## 5. RESULTS AND DISCUSSIONS :

### *a. Annual size structure*

This fishery target adult bluefin tuna with sizes ranging from 136 to 279 FL cm, corresponding to weights comprised between 36 and 348 kg RW. 90% of fish are between 180 and 250 cm FL. The average size of fish is about 218 cm (165 kg RW).

The annual size distribution showed some variability which are reflected from one hand by the shift in the mode (Figures 3a, 3b, 3c) and the variability in the average size and weight from the other hand (Figures 4 and 5).

### *b. Annual average size*

During the period 1999-2009, the evolution of the average size of bluefin tuna did not show any clear trend. It fluctuated from 200 to 233 cm FL, with generally a slight decreasing trend over the whole time period. The average weight of fish varied between 122 and 196 kg RW, showing similar pattern as the size (Figures 4 and 5).

### *c. Monthly size structure*

The monthly size distribution analysis indicated that there are differences according to the month. The fish caught from January to March is smaller than that fished from May to November. Nevertheless, the average monthly size did not show any clear trend which suggest that there is no hierarchical feeding migration according to the size as it is noted for the bluefin tuna caught by traps during its genetic migration (Idrissi and Abid, 2010) (Figures 6a,6b and 6c).

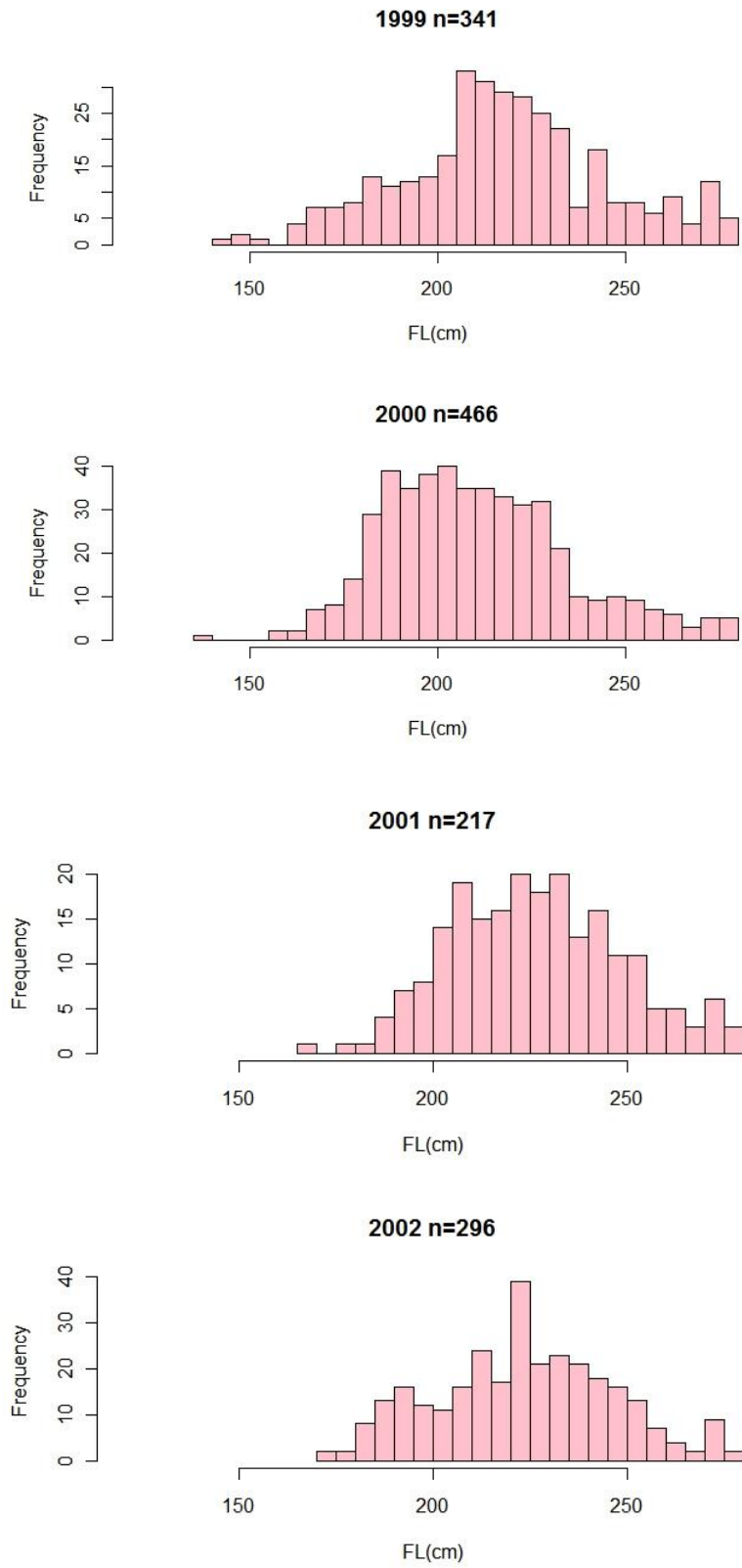
### *d. Age structure*

The age of fish ranges from 5 to 21 years, but 93% are aged between 7 and 16 years old. The most dominant age group in the whole time series is 10 years old (20%). Some differences in the annual age structure are also noticeable; the 2000 and 2006 catches were dominated by 8- 9 age group while for the other years, fishes aged 10 and 11 years are the most dominant (Figures 7a, 7b).

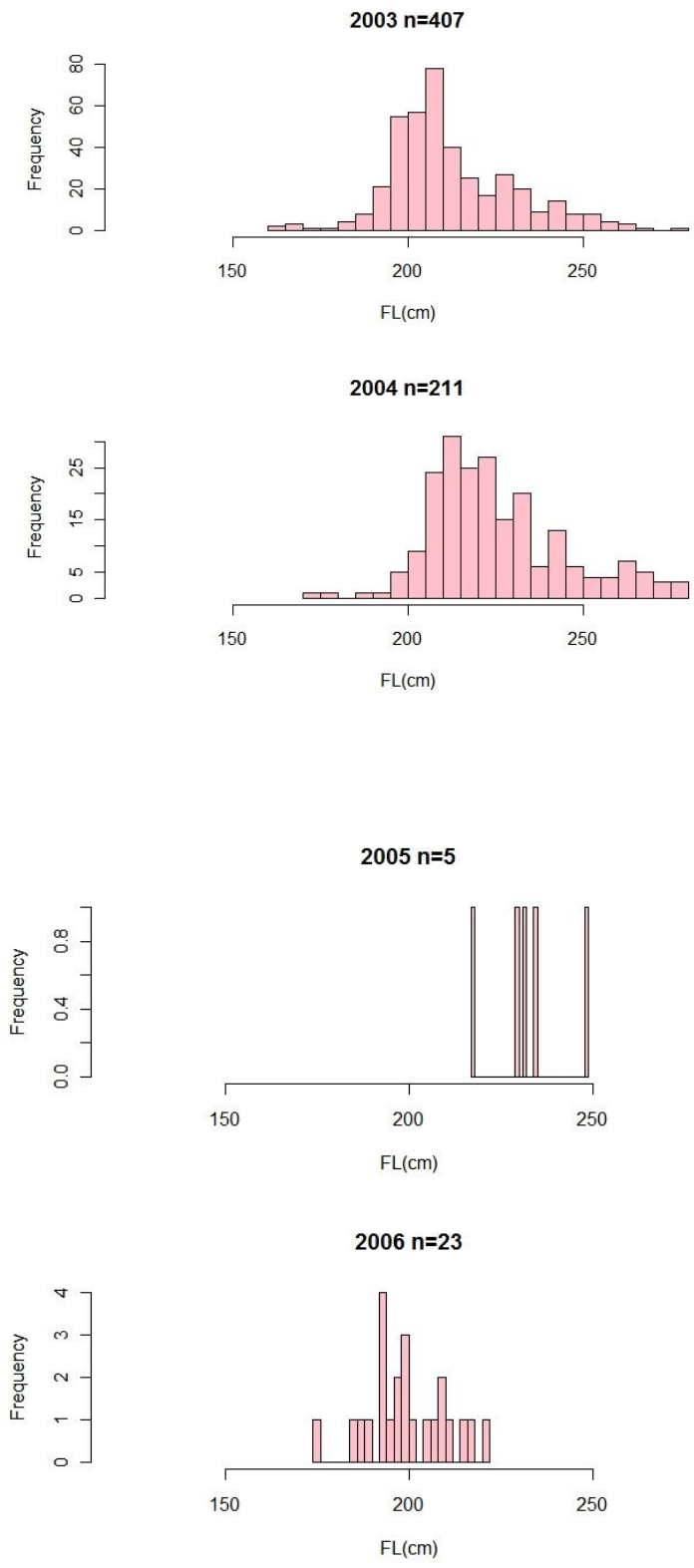
Regarding the average age of fish, it remained more or less stable around 11 years old during the last ten years (Figure 8).

## **6. REFERENCES:**

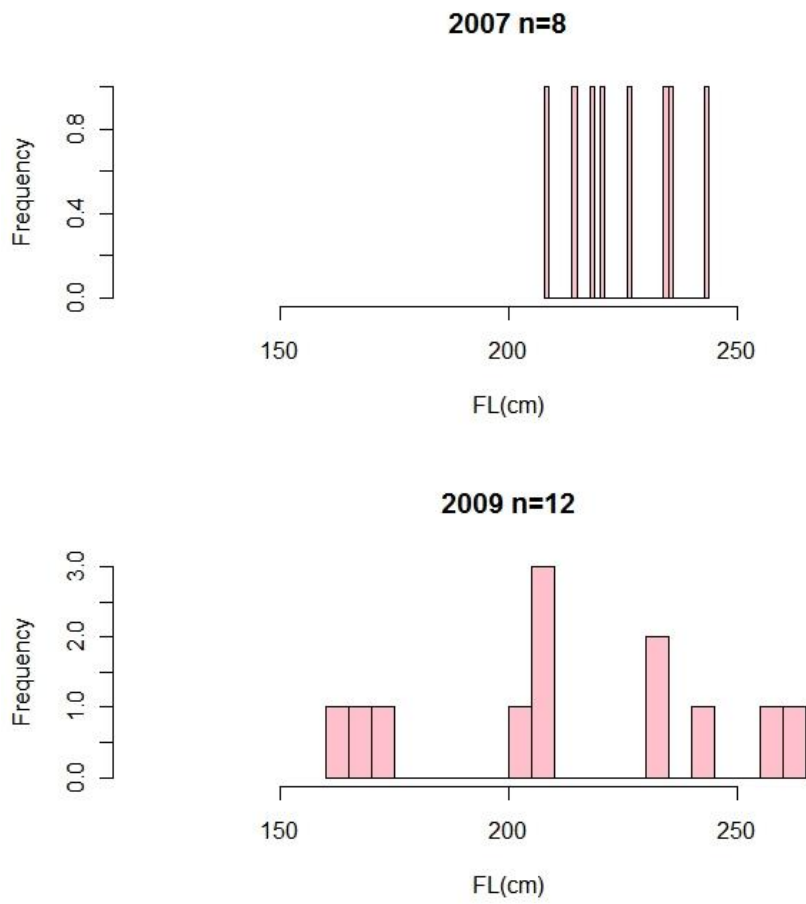
- IDRISSI. M. and N. Abid, 2010. Preliminary analysis of the size data of bluefin tuna (*Thunnus thynnus*) caught by the Moroccan Atlantic traps during 2009. Collect. Vol. Sci. Pap. ICCAT, 65(3): 968-974
- ABID. N.and M. Idrissi. 2007. Situation récente de la pêcherie du thon rouge (*Thunnus thynnus*) des côtes marocaines. Col.Vol.Sci.Pap. ICCAT, 60 : 1289-1298
- SROUR. A. et N. Abid, 2005. Situation récente des pêcheries thonières au Maroc : biologie et exploitation des principales espèces de thonidés et espèces apparentées, octobre 2005 (rapport interne).
- SROUR. A, M. Malouli Idrissi, N. Abid et A. Lamtai, 2003. Pêcherie au thon rouge dans la région de Ksar Sghir : aspects biologiques et socio-économiques (rapport interne).
- CORT, J. L. 1991. Age and growth of the bluefin tuna *Thunnus thynnus* (L.) of the Northeast Atlantic. Collect. Vol. Sci. Pap, ICCAT, 35: 213-230



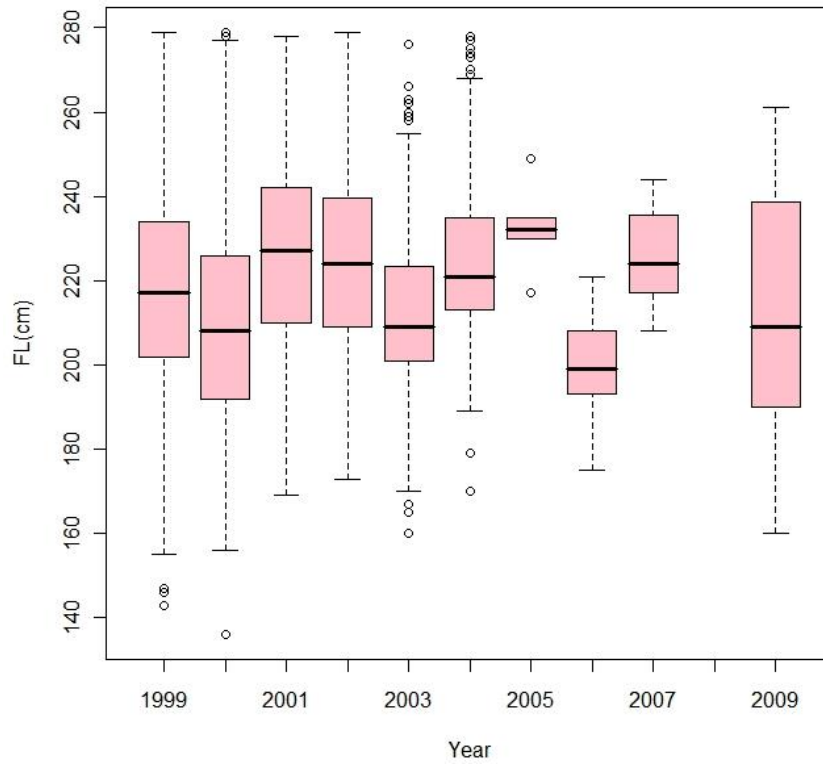
**Figure 3a.** Annual size frequencies distribution of BFT caught by Moroccan handline fishery, 1999-2002



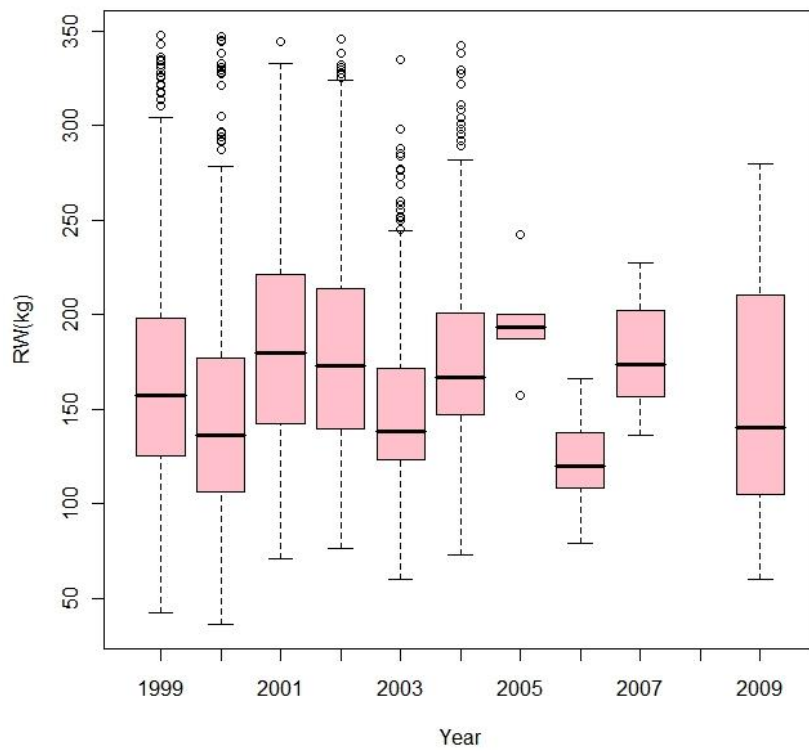
**Figure 3b.** Annual size frequencies distribution of BFT caught by Moroccan handline fishery, 2003-2006



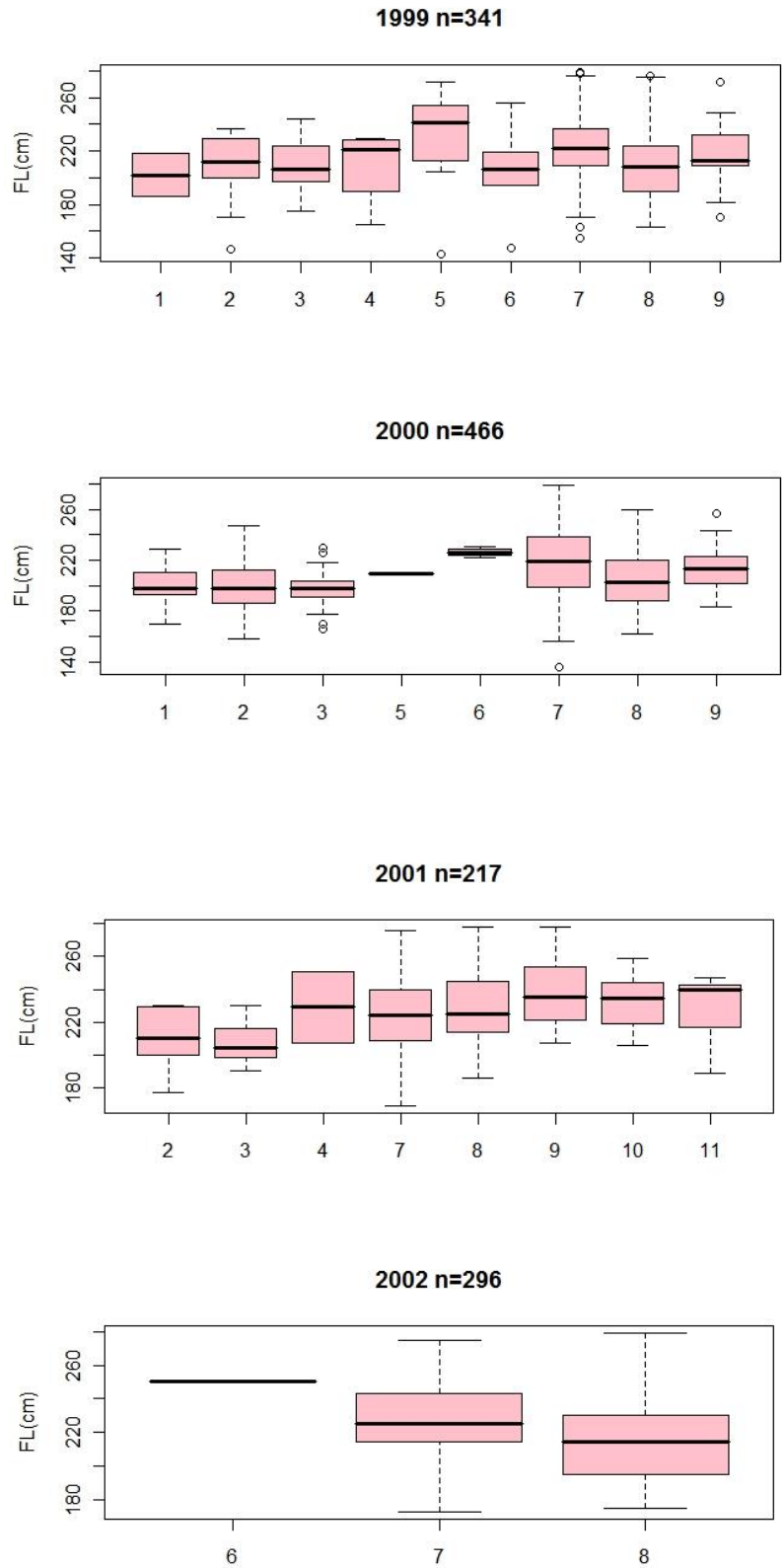
**Figure 3c.** Annual size frequencies distribution of BFT caught by Moroccan handline fishery, 2007 and 2009



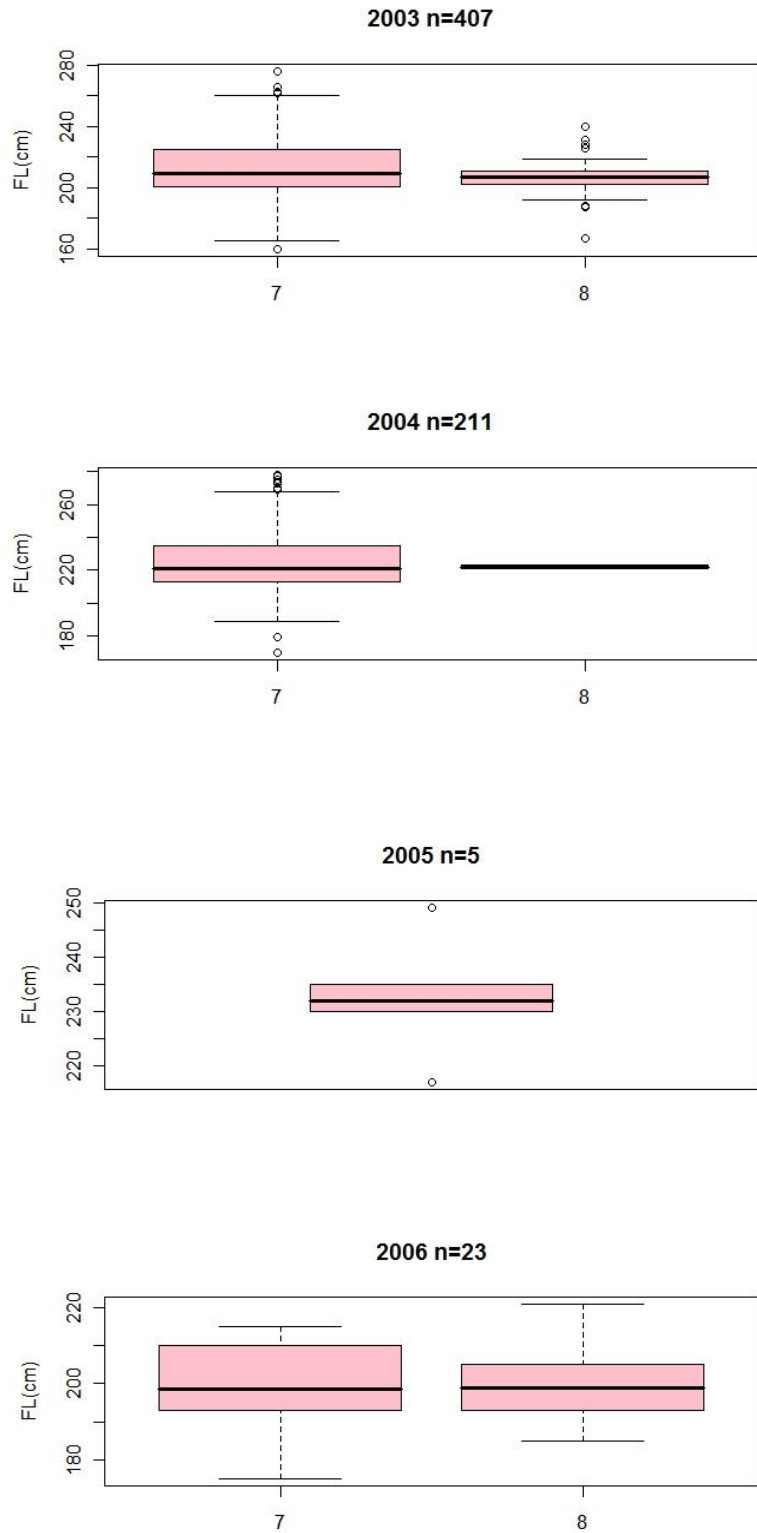
**Figure 4.** Boxplots indicating the size structure of BFT caught by Moroccan handline fishery, 1999- 2009



**Figure 5.** Boxplots indicating the annual weight(RW) structure of BFT caught by Moroccan handline fishery, 1999- 2009

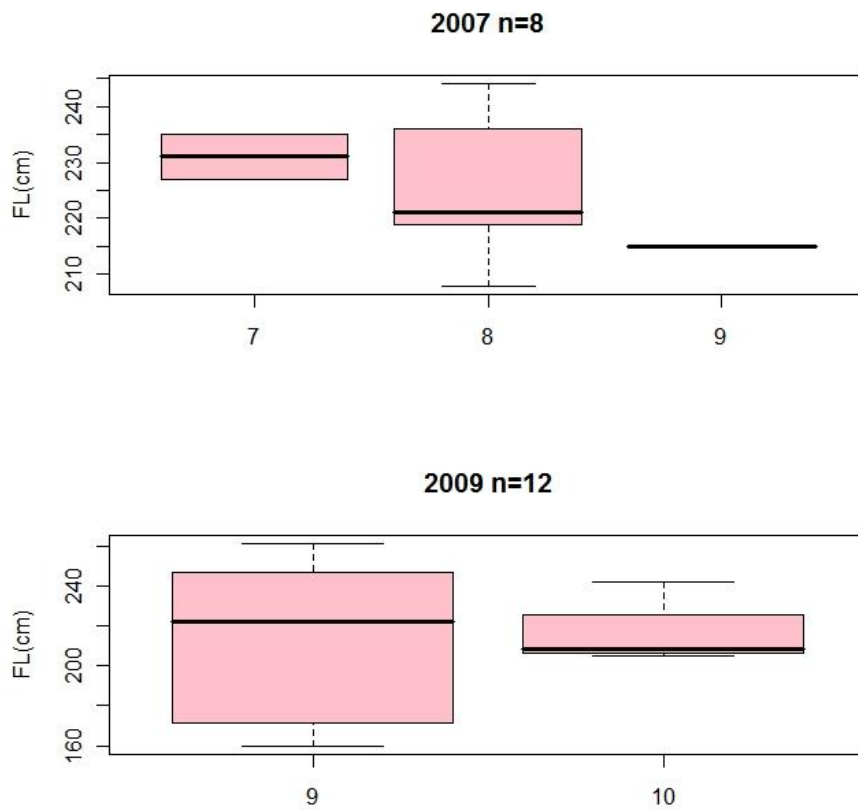


**Figure 6a.** Boxplots indicating the monthly weight(RW) structure of BFT caught by Moroccan handline fishery, 1999- 2002

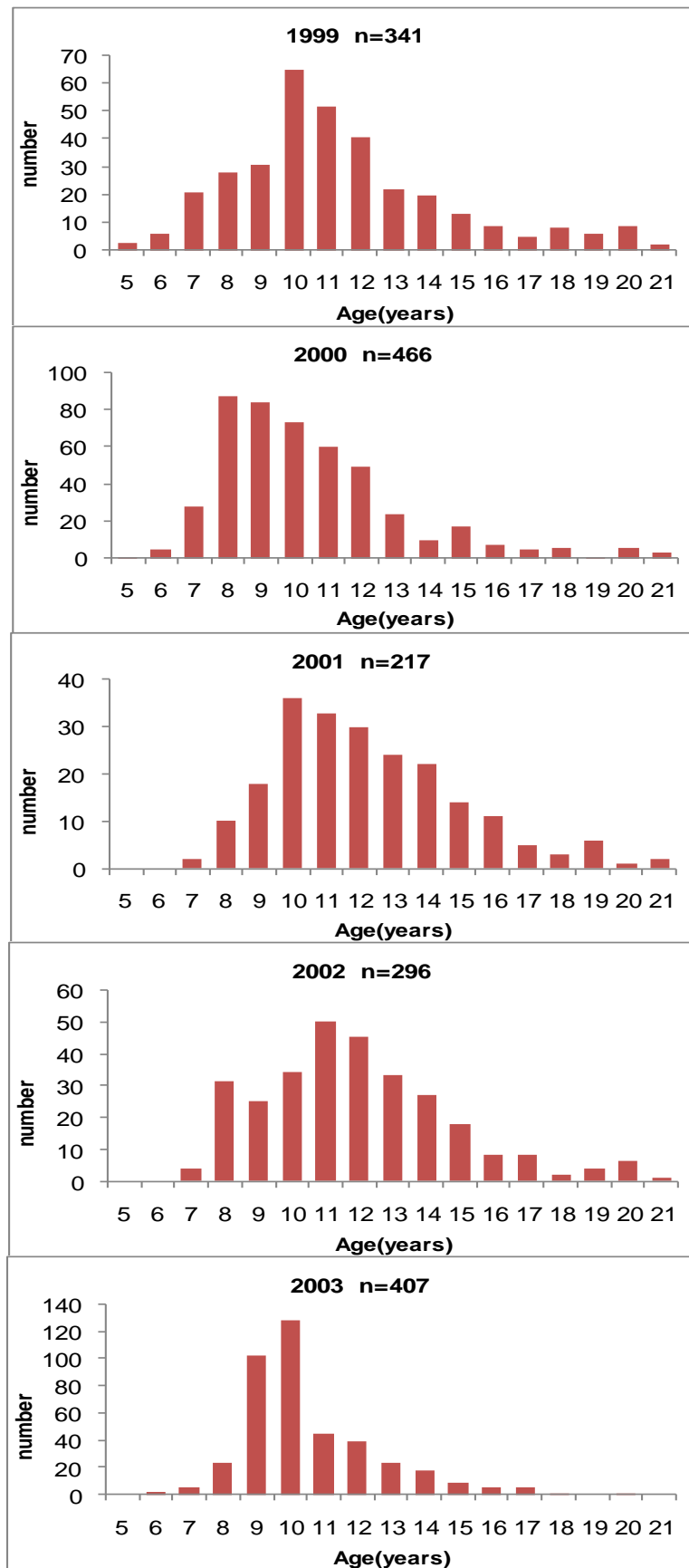


**Figure 6b.** Boxplots indicating the monthly weight(RW) structure of BFT caught by Moroccan handline fishery, 2003- 2006

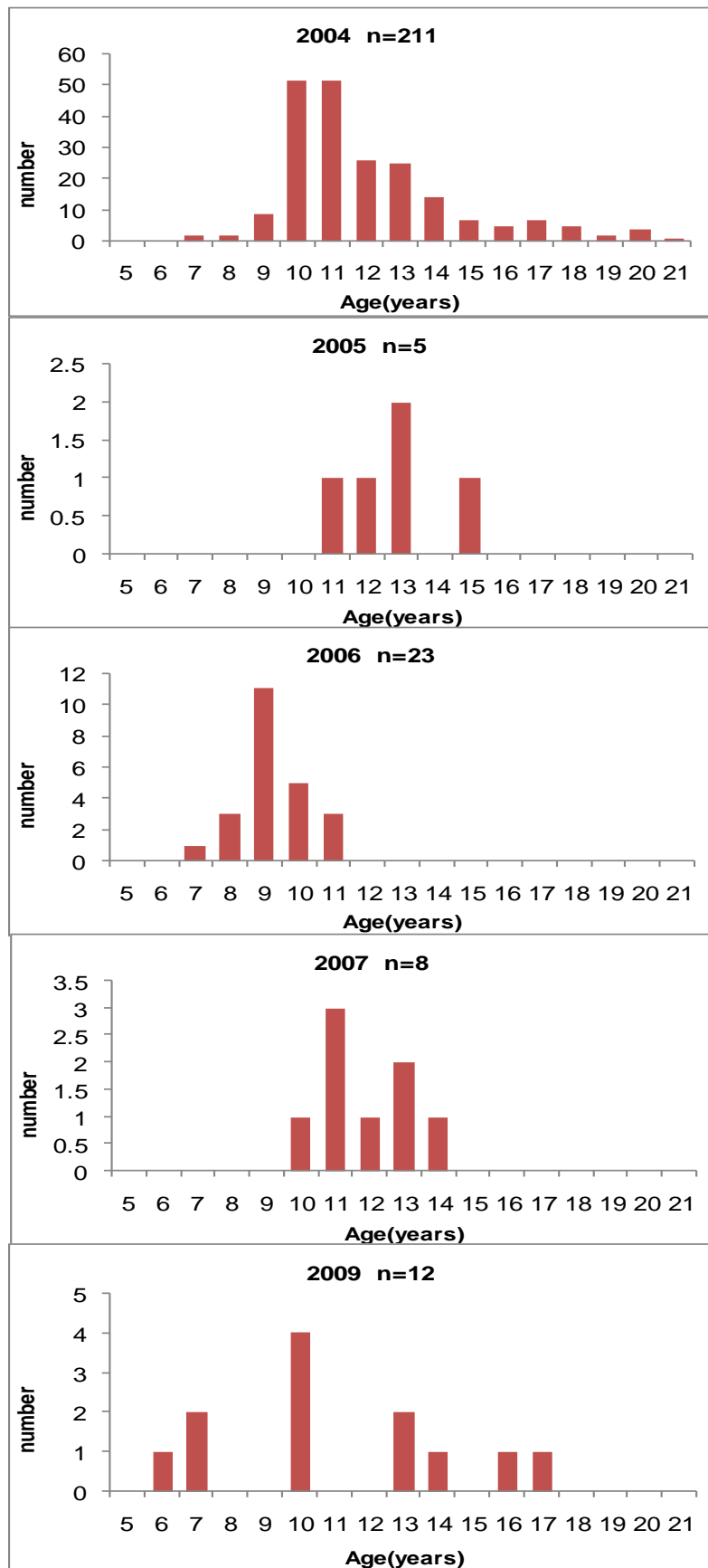




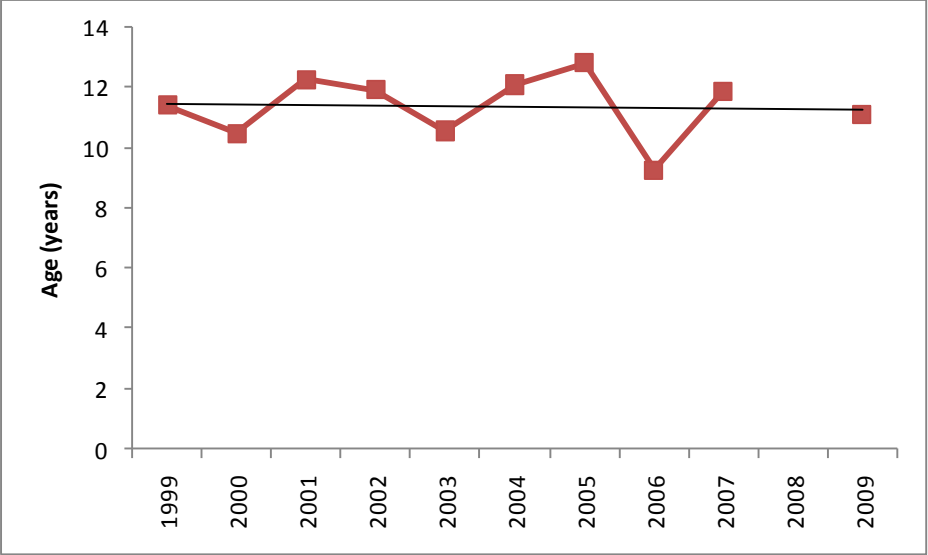
**Figure 6c.** Boxplots indicating the monthly weight(RW) structure of BFT caught by Moroccan handline fishery, 2007 and 2009



**Figure 7a.** Age frequencies distribution of BFT caught by Moroccan handline fishery, 1999- 2003



**Figure 7b.** Age frequencies distribution of BFT caught by Moroccan handline fishery, 2004 - 2009



**Figure 8.** Trend of the average age of BFT caught by Moroccan handline fishery, 1999-2009

7. **APPENDIX:** Detailed data sets.

Quad.	Square type code	Lat.	Long.	Year	Month	RW (kg)	Number fish
NW	1x1	35	5	1999	1	96	1
NW	1x1	35	5	1999	1	159	1
NW	1x1	35	5	1999	2	45	1
NW	1x1	35	5	1999	2	72	1
NW	1x1	35	5	1999	2	108	1
NW	1x1	35	5	1999	2	121	1
NW	1x1	35	5	1999	2	140	2
NW	1x1	35	5	1999	2	143	1
NW	1x1	35	5	1999	2	145	1
NW	1x1	35	5	1999	2	156	1
NW	1x1	35	5	1999	2	179	1
NW	1x1	35	5	1999	2	186	1
NW	1x1	35	5	1999	2	188	1
NW	1x1	35	5	1999	2	200	1
NW	1x1	35	5	1999	2	207	1
NW	1x1	35	5	1999	3	79	1
NW	1x1	35	5	1999	3	91	1
NW	1x1	35	5	1999	3	107	1
NW	1x1	35	5	1999	3	116	1
NW	1x1	35	5	1999	3	120	1
NW	1x1	35	5	1999	3	124	1
NW	1x1	35	5	1999	3	132	1
NW	1x1	35	5	1999	3	147	1
NW	1x1	35	5	1999	3	165	1
NW	1x1	35	5	1999	3	174	1
NW	1x1	35	5	1999	3	178	1
NW	1x1	35	5	1999	3	196	1
NW	1x1	35	5	1999	3	227	1
NW	1x1	35	5	1999	4	66	1
NW	1x1	35	5	1999	4	153	1
NW	1x1	35	5	1999	4	184	1
NW	1x1	35	5	1999	4	185	1
NW	1x1	35	5	1999	5	42	1
NW	1x1	35	5	1999	5	129	1
NW	1x1	35	5	1999	5	146	1
NW	1x1	35	5	1999	5	150	1
NW	1x1	35	5	1999	5	198	1
NW	1x1	35	5	1999	5	217	1
NW	1x1	35	5	1999	5	223	1
NW	1x1	35	5	1999	5	245	1
NW	1x1	35	5	1999	5	271	1
NW	1x1	35	5	1999	5	293	1
NW	1x1	35	5	1999	5	321	1
NW	1x1	35	5	1999	6	46	1
NW	1x1	35	5	1999	6	110	1
NW	1x1	35	5	1999	6	118	1
NW	1x1	35	5	1999	6	151	1
NW	1x1	35	5	1999	6	161	1
NW	1x1	35	5	1999	6	265	1

NW	1x1	35	5	1999	7	54	1
NW	1x1	35	5	1999	7	63	1
NW	1x1	35	5	1999	7	64	1
NW	1x1	35	5	1999	7	72	1
NW	1x1	35	5	1999	7	77	1
NW	1x1	35	5	1999	7	80	1
NW	1x1	35	5	1999	7	81	1
NW	1x1	35	5	1999	7	83	1
NW	1x1	35	5	1999	7	84	2
NW	1x1	35	5	1999	7	85	1
NW	1x1	35	5	1999	7	91	2
NW	1x1	35	5	1999	7	94	2
NW	1x1	35	5	1999	7	95	1
NW	1x1	35	5	1999	7	96	1
NW	1x1	35	5	1999	7	98	1
NW	1x1	35	5	1999	7	101	1
NW	1x1	35	5	1999	7	103	2
NW	1x1	35	5	1999	7	106	1
NW	1x1	35	5	1999	7	114	1
NW	1x1	35	5	1999	7	116	1
NW	1x1	35	5	1999	7	123	2
NW	1x1	35	5	1999	7	125	3
NW	1x1	35	5	1999	7	126	1
NW	1x1	35	5	1999	7	127	1
NW	1x1	35	5	1999	7	128	2
NW	1x1	35	5	1999	7	130	1
NW	1x1	35	5	1999	7	131	1
NW	1x1	35	5	1999	7	132	1
NW	1x1	35	5	1999	7	134	3
NW	1x1	35	5	1999	7	136	2
NW	1x1	35	5	1999	7	137	3
NW	1x1	35	5	1999	7	139	3
NW	1x1	35	5	1999	7	140	1
NW	1x1	35	5	1999	7	141	3
NW	1x1	35	5	1999	7	142	3
NW	1x1	35	5	1999	7	143	1
NW	1x1	35	5	1999	7	144	2
NW	1x1	35	5	1999	7	145	2
NW	1x1	35	5	1999	7	146	1
NW	1x1	35	5	1999	7	147	4
NW	1x1	35	5	1999	7	148	1
NW	1x1	35	5	1999	7	149	1
NW	1x1	35	5	1999	7	150	1
NW	1x1	35	5	1999	7	152	2
NW	1x1	35	5	1999	7	154	2
NW	1x1	35	5	1999	7	155	2
NW	1x1	35	5	1999	7	156	2
NW	1x1	35	5	1999	7	157	3
NW	1x1	35	5	1999	7	158	1
NW	1x1	35	5	1999	7	160	2
NW	1x1	35	5	1999	7	161	1
NW	1x1	35	5	1999	7	162	4

NW	1x1	35	5	1999	7	163	1
NW	1x1	35	5	1999	7	164	2
NW	1x1	35	5	1999	7	165	1
NW	1x1	35	5	1999	7	166	1
NW	1x1	35	5	1999	7	168	2
NW	1x1	35	5	1999	7	169	3
NW	1x1	35	5	1999	7	170	4
NW	1x1	35	5	1999	7	174	1
NW	1x1	35	5	1999	7	175	4
NW	1x1	35	5	1999	7	176	1
NW	1x1	35	5	1999	7	177	1
NW	1x1	35	5	1999	7	178	1
NW	1x1	35	5	1999	7	179	3
NW	1x1	35	5	1999	7	180	2
NW	1x1	35	5	1999	7	182	3
NW	1x1	35	5	1999	7	187	2
NW	1x1	35	5	1999	7	188	1
NW	1x1	35	5	1999	7	189	3
NW	1x1	35	5	1999	7	190	4
NW	1x1	35	5	1999	7	191	1
NW	1x1	35	5	1999	7	193	1
NW	1x1	35	5	1999	7	194	2
NW	1x1	35	5	1999	7	195	1
NW	1x1	35	5	1999	7	197	1
NW	1x1	35	5	1999	7	198	1
NW	1x1	35	5	1999	7	199	1
NW	1x1	35	5	1999	7	200	2
NW	1x1	35	5	1999	7	201	2
NW	1x1	35	5	1999	7	202	1
NW	1x1	35	5	1999	7	203	1
NW	1x1	35	5	1999	7	206	1
NW	1x1	35	5	1999	7	208	1
NW	1x1	35	5	1999	7	214	2
NW	1x1	35	5	1999	7	217	1
NW	1x1	35	5	1999	7	220	1
NW	1x1	35	5	1999	7	221	1
NW	1x1	35	5	1999	7	222	1
NW	1x1	35	5	1999	7	226	1
NW	1x1	35	5	1999	7	228	1
NW	1x1	35	5	1999	7	230	2
NW	1x1	35	5	1999	7	235	1
NW	1x1	35	5	1999	7	240	1
NW	1x1	35	5	1999	7	241	1
NW	1x1	35	5	1999	7	243	1
NW	1x1	35	5	1999	7	248	1
NW	1x1	35	5	1999	7	249	1
NW	1x1	35	5	1999	7	251	1
NW	1x1	35	5	1999	7	254	1
NW	1x1	35	5	1999	7	257	2
NW	1x1	35	5	1999	7	259	1
NW	1x1	35	5	1999	7	266	1
NW	1x1	35	5	1999	7	272	1

NW	1x1	35	5	1999	7	275	1
NW	1x1	35	5	1999	7	280	1
NW	1x1	35	5	1999	7	284	1
NW	1x1	35	5	1999	7	285	1
NW	1x1	35	5	1999	7	288	1
NW	1x1	35	5	1999	7	290	1
NW	1x1	35	5	1999	7	294	1
NW	1x1	35	5	1999	7	296	1
NW	1x1	35	5	1999	7	298	1
NW	1x1	35	5	1999	7	299	1
NW	1x1	35	5	1999	7	304	1
NW	1x1	35	5	1999	7	317	1
NW	1x1	35	5	1999	7	325	1
NW	1x1	35	5	1999	7	326	1
NW	1x1	35	5	1999	7	328	1
NW	1x1	35	5	1999	7	331	3
NW	1x1	35	5	1999	7	335	1
NW	1x1	35	5	1999	7	336	1
NW	1x1	35	5	1999	7	343	1
NW	1x1	35	5	1999	7	348	1
NW	1x1	35	5	1999	8	64	1
NW	1x1	35	5	1999	8	67	1
NW	1x1	35	5	1999	8	68	1
NW	1x1	35	5	1999	8	71	1
NW	1x1	35	5	1999	8	72	1
NW	1x1	35	5	1999	8	75	1
NW	1x1	35	5	1999	8	78	1
NW	1x1	35	5	1999	8	80	2
NW	1x1	35	5	1999	8	81	2
NW	1x1	35	5	1999	8	84	1
NW	1x1	35	5	1999	8	88	3
NW	1x1	35	5	1999	8	92	2
NW	1x1	35	5	1999	8	95	1
NW	1x1	35	5	1999	8	97	2
NW	1x1	35	5	1999	8	99	1
NW	1x1	35	5	1999	8	100	2
NW	1x1	35	5	1999	8	107	2
NW	1x1	35	5	1999	8	108	1
NW	1x1	35	5	1999	8	109	2
NW	1x1	35	5	1999	8	110	1
NW	1x1	35	5	1999	8	111	1
NW	1x1	35	5	1999	8	112	1
NW	1x1	35	5	1999	8	118	1
NW	1x1	35	5	1999	8	119	2
NW	1x1	35	5	1999	8	121	3
NW	1x1	35	5	1999	8	125	2
NW	1x1	35	5	1999	8	128	1
NW	1x1	35	5	1999	8	131	1
NW	1x1	35	5	1999	8	132	1
NW	1x1	35	5	1999	8	134	1
NW	1x1	35	5	1999	8	136	3
NW	1x1	35	5	1999	8	137	1



NW	1x1	35	5	1999	8	138	1
NW	1x1	35	5	1999	8	140	1
NW	1x1	35	5	1999	8	141	1
NW	1x1	35	5	1999	8	144	1
NW	1x1	35	5	1999	8	145	1
NW	1x1	35	5	1999	8	146	2
NW	1x1	35	5	1999	8	150	1
NW	1x1	35	5	1999	8	152	2
NW	1x1	35	5	1999	8	156	1
NW	1x1	35	5	1999	8	158	2
NW	1x1	35	5	1999	8	159	1
NW	1x1	35	5	1999	8	167	1
NW	1x1	35	5	1999	8	168	1
NW	1x1	35	5	1999	8	169	1
NW	1x1	35	5	1999	8	170	2
NW	1x1	35	5	1999	8	172	2
NW	1x1	35	5	1999	8	173	1
NW	1x1	35	5	1999	8	175	1
NW	1x1	35	5	1999	8	177	1
NW	1x1	35	5	1999	8	180	1
NW	1x1	35	5	1999	8	183	1
NW	1x1	35	5	1999	8	198	1
NW	1x1	35	5	1999	8	209	1
NW	1x1	35	5	1999	8	223	2
NW	1x1	35	5	1999	8	225	2
NW	1x1	35	5	1999	8	228	1
NW	1x1	35	5	1999	8	231	1
NW	1x1	35	5	1999	8	236	1
NW	1x1	35	5	1999	8	244	1
NW	1x1	35	5	1999	8	253	1
NW	1x1	35	5	1999	8	263	1
NW	1x1	35	5	1999	8	293	1
NW	1x1	35	5	1999	8	310	1
NW	1x1	35	5	1999	8	314	1
NW	1x1	35	5	1999	8	322	1
NW	1x1	35	5	1999	8	332	1
NW	1x1	35	5	1999	8	334	1
NW	1x1	35	5	1999	9	72	1
NW	1x1	35	5	1999	9	89	1
NW	1x1	35	5	1999	9	120	1
NW	1x1	35	5	1999	9	138	2
NW	1x1	35	5	1999	9	143	1
NW	1x1	35	5	1999	9	147	1
NW	1x1	35	5	1999	9	156	1
NW	1x1	35	5	1999	9	160	1
NW	1x1	35	5	1999	9	193	1
NW	1x1	35	5	1999	9	227	1
NW	1x1	35	5	1999	9	242	1
NW	1x1	35	5	1999	9	318	1
NW	1x1	35	5	2000	1	73	1
NW	1x1	35	5	2000	1	92	1
NW	1x1	35	5	2000	1	102	1

NW	1x1	35	5	2000	1	104	1
NW	1x1	35	5	2000	1	106	1
NW	1x1	35	5	2000	1	108	1
NW	1x1	35	5	2000	1	109	1
NW	1x1	35	5	2000	1	117	2
NW	1x1	35	5	2000	1	118	1
NW	1x1	35	5	2000	1	123	1
NW	1x1	35	5	2000	1	126	1
NW	1x1	35	5	2000	1	128	1
NW	1x1	35	5	2000	1	137	1
NW	1x1	35	5	2000	1	146	1
NW	1x1	35	5	2000	1	162	1
NW	1x1	35	5	2000	1	170	1
NW	1x1	35	5	2000	1	176	1
NW	1x1	35	5	2000	1	185	1
NW	1x1	35	5	2000	2	58	1
NW	1x1	35	5	2000	2	61	1
NW	1x1	35	5	2000	2	69	1
NW	1x1	35	5	2000	2	76	1
NW	1x1	35	5	2000	2	80	1
NW	1x1	35	5	2000	2	81	2
NW	1x1	35	5	2000	2	85	1
NW	1x1	35	5	2000	2	88	1
NW	1x1	35	5	2000	2	92	2
NW	1x1	35	5	2000	2	93	1
NW	1x1	35	5	2000	2	94	2
NW	1x1	35	5	2000	2	95	1
NW	1x1	35	5	2000	2	96	1
NW	1x1	35	5	2000	2	97	2
NW	1x1	35	5	2000	2	99	2
NW	1x1	35	5	2000	2	100	1
NW	1x1	35	5	2000	2	102	1
NW	1x1	35	5	2000	2	104	1
NW	1x1	35	5	2000	2	105	1
NW	1x1	35	5	2000	2	106	2
NW	1x1	35	5	2000	2	112	1
NW	1x1	35	5	2000	2	113	1
NW	1x1	35	5	2000	2	114	1
NW	1x1	35	5	2000	2	116	1
NW	1x1	35	5	2000	2	117	1
NW	1x1	35	5	2000	2	118	2
NW	1x1	35	5	2000	2	120	2
NW	1x1	35	5	2000	2	122	2
NW	1x1	35	5	2000	2	124	1
NW	1x1	35	5	2000	2	125	1
NW	1x1	35	5	2000	2	126	3
NW	1x1	35	5	2000	2	132	1
NW	1x1	35	5	2000	2	135	1
NW	1x1	35	5	2000	2	137	1
NW	1x1	35	5	2000	2	138	1
NW	1x1	35	5	2000	2	141	1
NW	1x1	35	5	2000	2	143	1

NW	1x1	35	5	2000	2	145	1
NW	1x1	35	5	2000	2	147	1
NW	1x1	35	5	2000	2	148	1
NW	1x1	35	5	2000	2	151	1
NW	1x1	35	5	2000	2	153	1
NW	1x1	35	5	2000	2	159	2
NW	1x1	35	5	2000	2	166	1
NW	1x1	35	5	2000	2	168	1
NW	1x1	35	5	2000	2	171	1
NW	1x1	35	5	2000	2	172	1
NW	1x1	35	5	2000	2	173	1
NW	1x1	35	5	2000	2	179	1
NW	1x1	35	5	2000	2	182	1
NW	1x1	35	5	2000	2	187	1
NW	1x1	35	5	2000	2	204	1
NW	1x1	35	5	2000	2	236	1
NW	1x1	35	5	2000	3	67	1
NW	1x1	35	5	2000	3	72	1
NW	1x1	35	5	2000	3	83	1
NW	1x1	35	5	2000	3	88	2
NW	1x1	35	5	2000	3	95	1
NW	1x1	35	5	2000	3	100	1
NW	1x1	35	5	2000	3	104	2
NW	1x1	35	5	2000	3	108	2
NW	1x1	35	5	2000	3	109	1
NW	1x1	35	5	2000	3	113	1
NW	1x1	35	5	2000	3	115	2
NW	1x1	35	5	2000	3	119	1
NW	1x1	35	5	2000	3	122	1
NW	1x1	35	5	2000	3	123	1
NW	1x1	35	5	2000	3	125	1
NW	1x1	35	5	2000	3	126	1
NW	1x1	35	5	2000	3	127	2
NW	1x1	35	5	2000	3	128	1
NW	1x1	35	5	2000	3	132	1
NW	1x1	35	5	2000	3	142	1
NW	1x1	35	5	2000	3	146	1
NW	1x1	35	5	2000	3	156	1
NW	1x1	35	5	2000	3	158	1
NW	1x1	35	5	2000	3	179	1
NW	1x1	35	5	2000	3	188	1
NW	1x1	35	5	2000	5	140	1
NW	1x1	35	5	2000	6	169	1
NW	1x1	35	5	2000	6	178	1
NW	1x1	35	5	2000	6	192	1
NW	1x1	35	5	2000	7	36	1
NW	1x1	35	5	2000	7	55	1
NW	1x1	35	5	2000	7	78	1
NW	1x1	35	5	2000	7	80	1
NW	1x1	35	5	2000	7	87	2
NW	1x1	35	5	2000	7	89	4
NW	1x1	35	5	2000	7	90	2

NW	1x1	35	5	2000	7	91	1
NW	1x1	35	5	2000	7	92	2
NW	1x1	35	5	2000	7	93	1
NW	1x1	35	5	2000	7	95	2
NW	1x1	35	5	2000	7	97	2
NW	1x1	35	5	2000	7	98	2
NW	1x1	35	5	2000	7	99	4
NW	1x1	35	5	2000	7	101	3
NW	1x1	35	5	2000	7	102	1
NW	1x1	35	5	2000	7	103	2
NW	1x1	35	5	2000	7	104	1
NW	1x1	35	5	2000	7	105	2
NW	1x1	35	5	2000	7	107	3
NW	1x1	35	5	2000	7	110	1
NW	1x1	35	5	2000	7	112	1
NW	1x1	35	5	2000	7	114	1
NW	1x1	35	5	2000	7	116	3
NW	1x1	35	5	2000	7	117	1
NW	1x1	35	5	2000	7	118	2
NW	1x1	35	5	2000	7	119	3
NW	1x1	35	5	2000	7	120	2
NW	1x1	35	5	2000	7	122	1
NW	1x1	35	5	2000	7	124	1
NW	1x1	35	5	2000	7	126	1
NW	1x1	35	5	2000	7	129	3
NW	1x1	35	5	2000	7	130	1
NW	1x1	35	5	2000	7	131	2
NW	1x1	35	5	2000	7	132	3
NW	1x1	35	5	2000	7	133	5
NW	1x1	35	5	2000	7	134	1
NW	1x1	35	5	2000	7	135	1
NW	1x1	35	5	2000	7	136	1
NW	1x1	35	5	2000	7	139	1
NW	1x1	35	5	2000	7	141	2
NW	1x1	35	5	2000	7	142	1
NW	1x1	35	5	2000	7	144	3
NW	1x1	35	5	2000	7	145	3
NW	1x1	35	5	2000	7	146	3
NW	1x1	35	5	2000	7	147	2
NW	1x1	35	5	2000	7	153	2
NW	1x1	35	5	2000	7	154	1
NW	1x1	35	5	2000	7	156	1
NW	1x1	35	5	2000	7	157	1
NW	1x1	35	5	2000	7	158	1
NW	1x1	35	5	2000	7	159	1
NW	1x1	35	5	2000	7	160	2
NW	1x1	35	5	2000	7	161	1
NW	1x1	35	5	2000	7	162	4
NW	1x1	35	5	2000	7	163	3
NW	1x1	35	5	2000	7	164	2
NW	1x1	35	5	2000	7	165	2
NW	1x1	35	5	2000	7	168	1

NW	1x1	35	5	2000	7	169	1
NW	1x1	35	5	2000	7	170	3
NW	1x1	35	5	2000	7	172	2
NW	1x1	35	5	2000	7	173	1
NW	1x1	35	5	2000	7	174	1
NW	1x1	35	5	2000	7	175	1
NW	1x1	35	5	2000	7	176	1
NW	1x1	35	5	2000	7	177	1
NW	1x1	35	5	2000	7	180	3
NW	1x1	35	5	2000	7	181	2
NW	1x1	35	5	2000	7	183	3
NW	1x1	35	5	2000	7	187	1
NW	1x1	35	5	2000	7	188	1
NW	1x1	35	5	2000	7	190	3
NW	1x1	35	5	2000	7	191	1
NW	1x1	35	5	2000	7	193	3
NW	1x1	35	5	2000	7	197	1
NW	1x1	35	5	2000	7	199	2
NW	1x1	35	5	2000	7	200	1
NW	1x1	35	5	2000	7	201	2
NW	1x1	35	5	2000	7	206	2
NW	1x1	35	5	2000	7	209	1
NW	1x1	35	5	2000	7	210	1
NW	1x1	35	5	2000	7	211	2
NW	1x1	35	5	2000	7	213	1
NW	1x1	35	5	2000	7	216	1
NW	1x1	35	5	2000	7	217	2
NW	1x1	35	5	2000	7	220	1
NW	1x1	35	5	2000	7	229	1
NW	1x1	35	5	2000	7	231	1
NW	1x1	35	5	2000	7	239	2
NW	1x1	35	5	2000	7	240	2
NW	1x1	35	5	2000	7	243	3
NW	1x1	35	5	2000	7	247	2
NW	1x1	35	5	2000	7	252	1
NW	1x1	35	5	2000	7	253	2
NW	1x1	35	5	2000	7	255	1
NW	1x1	35	5	2000	7	257	1
NW	1x1	35	5	2000	7	262	1
NW	1x1	35	5	2000	7	264	2
NW	1x1	35	5	2000	7	266	1
NW	1x1	35	5	2000	7	275	1
NW	1x1	35	5	2000	7	287	1
NW	1x1	35	5	2000	7	291	1
NW	1x1	35	5	2000	7	292	1
NW	1x1	35	5	2000	7	294	2
NW	1x1	35	5	2000	7	296	1
NW	1x1	35	5	2000	7	297	1
NW	1x1	35	5	2000	7	305	2
NW	1x1	35	5	2000	7	321	1
NW	1x1	35	5	2000	7	327	1
NW	1x1	35	5	2000	7	328	1

NW	1x1	35	5	2000	7	329	1
NW	1x1	35	5	2000	7	331	1
NW	1x1	35	5	2000	7	333	1
NW	1x1	35	5	2000	7	338	1
NW	1x1	35	5	2000	7	344	1
NW	1x1	35	5	2000	7	345	1
NW	1x1	35	5	2000	7	347	1
NW	1x1	35	5	2000	8	62	1
NW	1x1	35	5	2000	8	68	1
NW	1x1	35	5	2000	8	69	1
NW	1x1	35	5	2000	8	73	1
NW	1x1	35	5	2000	8	74	1
NW	1x1	35	5	2000	8	75	2
NW	1x1	35	5	2000	8	77	1
NW	1x1	35	5	2000	8	81	2
NW	1x1	35	5	2000	8	82	2
NW	1x1	35	5	2000	8	85	1
NW	1x1	35	5	2000	8	86	3
NW	1x1	35	5	2000	8	88	2
NW	1x1	35	5	2000	8	90	1
NW	1x1	35	5	2000	8	91	1
NW	1x1	35	5	2000	8	95	1
NW	1x1	35	5	2000	8	96	1
NW	1x1	35	5	2000	8	97	2
NW	1x1	35	5	2000	8	98	3
NW	1x1	35	5	2000	8	100	5
NW	1x1	35	5	2000	8	101	1
NW	1x1	35	5	2000	8	102	2
NW	1x1	35	5	2000	8	104	1
NW	1x1	35	5	2000	8	105	1
NW	1x1	35	5	2000	8	106	1
NW	1x1	35	5	2000	8	108	2
NW	1x1	35	5	2000	8	110	2
NW	1x1	35	5	2000	8	111	2
NW	1x1	35	5	2000	8	113	1
NW	1x1	35	5	2000	8	115	3
NW	1x1	35	5	2000	8	116	1
NW	1x1	35	5	2000	8	119	2
NW	1x1	35	5	2000	8	120	1
NW	1x1	35	5	2000	8	121	2
NW	1x1	35	5	2000	8	123	2
NW	1x1	35	5	2000	8	124	2
NW	1x1	35	5	2000	8	125	1
NW	1x1	35	5	2000	8	126	3
NW	1x1	35	5	2000	8	130	1
NW	1x1	35	5	2000	8	132	2
NW	1x1	35	5	2000	8	134	1
NW	1x1	35	5	2000	8	136	1
NW	1x1	35	5	2000	8	138	1
NW	1x1	35	5	2000	8	140	1
NW	1x1	35	5	2000	8	142	2
NW	1x1	35	5	2000	8	143	3

NW	1x1	35	5	2000	8	145	1
NW	1x1	35	5	2000	8	146	2
NW	1x1	35	5	2000	8	147	1
NW	1x1	35	5	2000	8	149	1
NW	1x1	35	5	2000	8	150	1
NW	1x1	35	5	2000	8	151	1
NW	1x1	35	5	2000	8	153	2
NW	1x1	35	5	2000	8	154	1
NW	1x1	35	5	2000	8	156	2
NW	1x1	35	5	2000	8	160	1
NW	1x1	35	5	2000	8	161	3
NW	1x1	35	5	2000	8	163	2
NW	1x1	35	5	2000	8	165	1
NW	1x1	35	5	2000	8	171	2
NW	1x1	35	5	2000	8	173	1
NW	1x1	35	5	2000	8	174	1
NW	1x1	35	5	2000	8	178	2
NW	1x1	35	5	2000	8	179	1
NW	1x1	35	5	2000	8	180	3
NW	1x1	35	5	2000	8	181	2
NW	1x1	35	5	2000	8	184	3
NW	1x1	35	5	2000	8	191	1
NW	1x1	35	5	2000	8	195	2
NW	1x1	35	5	2000	8	197	1
NW	1x1	35	5	2000	8	199	1
NW	1x1	35	5	2000	8	207	1
NW	1x1	35	5	2000	8	219	1
NW	1x1	35	5	2000	8	222	1
NW	1x1	35	5	2000	8	237	1
NW	1x1	35	5	2000	8	239	1
NW	1x1	35	5	2000	8	247	1
NW	1x1	35	5	2000	8	277	1
NW	1x1	35	5	2000	8	278	1
NW	1x1	35	5	2000	9	91	1
NW	1x1	35	5	2000	9	100	2
NW	1x1	35	5	2000	9	104	1
NW	1x1	35	5	2000	9	105	1
NW	1x1	35	5	2000	9	108	1
NW	1x1	35	5	2000	9	111	1
NW	1x1	35	5	2000	9	114	1
NW	1x1	35	5	2000	9	125	3
NW	1x1	35	5	2000	9	126	1
NW	1x1	35	5	2000	9	131	1
NW	1x1	35	5	2000	9	132	1
NW	1x1	35	5	2000	9	136	1
NW	1x1	35	5	2000	9	142	1
NW	1x1	35	5	2000	9	147	1
NW	1x1	35	5	2000	9	149	1
NW	1x1	35	5	2000	9	157	1
NW	1x1	35	5	2000	9	163	1
NW	1x1	35	5	2000	9	167	2
NW	1x1	35	5	2000	9	168	1

NW	1x1	35	5	2000	9	170	1
NW	1x1	35	5	2000	9	171	1
NW	1x1	35	5	2000	9	179	1
NW	1x1	35	5	2000	9	180	1
NW	1x1	35	5	2000	9	184	1
NW	1x1	35	5	2000	9	193	1
NW	1x1	35	5	2000	9	196	1
NW	1x1	35	5	2000	9	219	1
NW	1x1	35	5	2000	9	225	1
NW	1x1	35	5	2000	9	268	1
NW	1x1	35	5	2001	2	82	1
NW	1x1	35	5	2001	2	107	1
NW	1x1	35	5	2001	2	121	2
NW	1x1	35	5	2001	2	142	1
NW	1x1	35	5	2001	2	172	1
NW	1x1	35	5	2001	2	186	1
NW	1x1	35	5	2001	2	187	1
NW	1x1	35	5	2001	2	189	1
NW	1x1	35	5	2001	3	103	1
NW	1x1	35	5	2001	3	118	1
NW	1x1	35	5	2001	3	129	1
NW	1x1	35	5	2001	3	154	1
NW	1x1	35	5	2001	3	188	1
NW	1x1	35	5	2001	4	134	1
NW	1x1	35	5	2001	4	247	1
NW	1x1	35	5	2001	7	71	1
NW	1x1	35	5	2001	7	93	1
NW	1x1	35	5	2001	7	97	1
NW	1x1	35	5	2001	7	106	1
NW	1x1	35	5	2001	7	107	2
NW	1x1	35	5	2001	7	109	1
NW	1x1	35	5	2001	7	111	1
NW	1x1	35	5	2001	7	116	1
NW	1x1	35	5	2001	7	120	2
NW	1x1	35	5	2001	7	122	1
NW	1x1	35	5	2001	7	123	1
NW	1x1	35	5	2001	7	126	1
NW	1x1	35	5	2001	7	128	1
NW	1x1	35	5	2001	7	130	1
NW	1x1	35	5	2001	7	132	1
NW	1x1	35	5	2001	7	133	1
NW	1x1	35	5	2001	7	136	1
NW	1x1	35	5	2001	7	137	1
NW	1x1	35	5	2001	7	138	2
NW	1x1	35	5	2001	7	139	2
NW	1x1	35	5	2001	7	140	1
NW	1x1	35	5	2001	7	145	1
NW	1x1	35	5	2001	7	146	1
NW	1x1	35	5	2001	7	147	3
NW	1x1	35	5	2001	7	150	1
NW	1x1	35	5	2001	7	151	1
NW	1x1	35	5	2001	7	153	1



NW	1x1	35	5	2001	7	158	1
NW	1x1	35	5	2001	7	159	1
NW	1x1	35	5	2001	7	163	1
NW	1x1	35	5	2001	7	165	1
NW	1x1	35	5	2001	7	166	3
NW	1x1	35	5	2001	7	172	1
NW	1x1	35	5	2001	7	175	1
NW	1x1	35	5	2001	7	178	1
NW	1x1	35	5	2001	7	180	1
NW	1x1	35	5	2001	7	181	2
NW	1x1	35	5	2001	7	182	1
NW	1x1	35	5	2001	7	189	1
NW	1x1	35	5	2001	7	190	1
NW	1x1	35	5	2001	7	191	2
NW	1x1	35	5	2001	7	194	1
NW	1x1	35	5	2001	7	195	1
NW	1x1	35	5	2001	7	198	2
NW	1x1	35	5	2001	7	199	1
NW	1x1	35	5	2001	7	206	2
NW	1x1	35	5	2001	7	212	2
NW	1x1	35	5	2001	7	216	2
NW	1x1	35	5	2001	7	218	1
NW	1x1	35	5	2001	7	221	1
NW	1x1	35	5	2001	7	222	1
NW	1x1	35	5	2001	7	226	1
NW	1x1	35	5	2001	7	238	2
NW	1x1	35	5	2001	7	240	1
NW	1x1	35	5	2001	7	245	1
NW	1x1	35	5	2001	7	246	2
NW	1x1	35	5	2001	7	254	1
NW	1x1	35	5	2001	7	265	2
NW	1x1	35	5	2001	7	267	1
NW	1x1	35	5	2001	7	285	1
NW	1x1	35	5	2001	7	302	1
NW	1x1	35	5	2001	7	318	1
NW	1x1	35	5	2001	7	319	1
NW	1x1	35	5	2001	7	324	1
NW	1x1	35	5	2001	7	333	1
NW	1x1	35	5	2001	8	97	1
NW	1x1	35	5	2001	8	107	1
NW	1x1	35	5	2001	8	118	1
NW	1x1	35	5	2001	8	120	1
NW	1x1	35	5	2001	8	122	2
NW	1x1	35	5	2001	8	125	1
NW	1x1	35	5	2001	8	127	2
NW	1x1	35	5	2001	8	128	1
NW	1x1	35	5	2001	8	129	2
NW	1x1	35	5	2001	8	133	2
NW	1x1	35	5	2001	8	136	1
NW	1x1	35	5	2001	8	137	1
NW	1x1	35	5	2001	8	139	1
NW	1x1	35	5	2001	8	148	2

NW	1x1	35	5	2001	8	150	1
NW	1x1	35	5	2001	8	153	2
NW	1x1	35	5	2001	8	154	1
NW	1x1	35	5	2001	8	159	1
NW	1x1	35	5	2001	8	160	1
NW	1x1	35	5	2001	8	161	2
NW	1x1	35	5	2001	8	163	1
NW	1x1	35	5	2001	8	164	1
NW	1x1	35	5	2001	8	165	3
NW	1x1	35	5	2001	8	166	1
NW	1x1	35	5	2001	8	167	2
NW	1x1	35	5	2001	8	170	1
NW	1x1	35	5	2001	8	172	1
NW	1x1	35	5	2001	8	175	1
NW	1x1	35	5	2001	8	176	1
NW	1x1	35	5	2001	8	180	1
NW	1x1	35	5	2001	8	181	2
NW	1x1	35	5	2001	8	182	2
NW	1x1	35	5	2001	8	190	1
NW	1x1	35	5	2001	8	192	1
NW	1x1	35	5	2001	8	196	1
NW	1x1	35	5	2001	8	200	1
NW	1x1	35	5	2001	8	201	1
NW	1x1	35	5	2001	8	204	1
NW	1x1	35	5	2001	8	207	1
NW	1x1	35	5	2001	8	210	1
NW	1x1	35	5	2001	8	218	2
NW	1x1	35	5	2001	8	224	1
NW	1x1	35	5	2001	8	227	1
NW	1x1	35	5	2001	8	230	2
NW	1x1	35	5	2001	8	234	1
NW	1x1	35	5	2001	8	241	1
NW	1x1	35	5	2001	8	242	1
NW	1x1	35	5	2001	8	254	1
NW	1x1	35	5	2001	8	256	1
NW	1x1	35	5	2001	8	257	1
NW	1x1	35	5	2001	8	261	1
NW	1x1	35	5	2001	8	262	1
NW	1x1	35	5	2001	8	268	1
NW	1x1	35	5	2001	8	280	1
NW	1x1	35	5	2001	8	290	1
NW	1x1	35	5	2001	8	299	1
NW	1x1	35	5	2001	8	308	1
NW	1x1	35	5	2001	8	316	1
NW	1x1	35	5	2001	8	321	1
NW	1x1	35	5	2001	8	325	1
NW	1x1	35	5	2001	8	344	1
NW	1x1	35	5	2001	9	134	1
NW	1x1	35	5	2001	9	144	1
NW	1x1	35	5	2001	9	154	1
NW	1x1	35	5	2001	9	166	1
NW	1x1	35	5	2001	9	180	1

NW	1x1	35	5	2001	9	185	1
NW	1x1	35	5	2001	9	201	1
NW	1x1	35	5	2001	9	204	1
NW	1x1	35	5	2001	9	223	1
NW	1x1	35	5	2001	9	229	1
NW	1x1	35	5	2001	9	256	1
NW	1x1	35	5	2001	9	279	1
NW	1x1	35	5	2001	9	290	1
NW	1x1	35	5	2001	9	344	1
NW	1x1	35	5	2001	10	133	1
NW	1x1	35	5	2001	10	147	1
NW	1x1	35	5	2001	10	154	1
NW	1x1	35	5	2001	10	158	1
NW	1x1	35	5	2001	10	159	1
NW	1x1	35	5	2001	10	162	1
NW	1x1	35	5	2001	10	176	1
NW	1x1	35	5	2001	10	178	1
NW	1x1	35	5	2001	10	195	1
NW	1x1	35	5	2001	10	199	2
NW	1x1	35	5	2001	10	200	2
NW	1x1	35	5	2001	10	201	1
NW	1x1	35	5	2001	10	216	1
NW	1x1	35	5	2001	10	218	1
NW	1x1	35	5	2001	10	228	1
NW	1x1	35	5	2001	10	232	1
NW	1x1	35	5	2001	10	247	1
NW	1x1	35	5	2001	10	249	1
NW	1x1	35	5	2001	10	256	1
NW	1x1	35	5	2001	10	273	1
NW	1x1	35	5	2001	11	101	1
NW	1x1	35	5	2001	11	142	1
NW	1x1	35	5	2001	11	170	1
NW	1x1	35	5	2001	11	211	1
NW	1x1	35	5	2001	11	214	1
NW	1x1	35	5	2001	11	220	1
NW	1x1	35	5	2001	11	223	1
NW	1x1	35	5	2001	11	235	1
NW	1x1	35	5	2002	6	245	1
NW	1x1	35	5	2002	7	76	1
NW	1x1	35	5	2002	7	92	1
NW	1x1	35	5	2002	7	93	1
NW	1x1	35	5	2002	7	95	1
NW	1x1	35	5	2002	7	97	2
NW	1x1	35	5	2002	7	101	3
NW	1x1	35	5	2002	7	102	2
NW	1x1	35	5	2002	7	103	2
NW	1x1	35	5	2002	7	104	1
NW	1x1	35	5	2002	7	105	1
NW	1x1	35	5	2002	7	106	1
NW	1x1	35	5	2002	7	107	1
NW	1x1	35	5	2002	7	110	2
NW	1x1	35	5	2002	7	112	1

NW	1x1	35	5	2002	7	114	1
NW	1x1	35	5	2002	7	115	2
NW	1x1	35	5	2002	7	116	1
NW	1x1	35	5	2002	7	117	2
NW	1x1	35	5	2002	7	120	1
NW	1x1	35	5	2002	7	121	1
NW	1x1	35	5	2002	7	124	1
NW	1x1	35	5	2002	7	126	3
NW	1x1	35	5	2002	7	127	1
NW	1x1	35	5	2002	7	128	1
NW	1x1	35	5	2002	7	132	1
NW	1x1	35	5	2002	7	133	1
NW	1x1	35	5	2002	7	134	1
NW	1x1	35	5	2002	7	136	2
NW	1x1	35	5	2002	7	140	1
NW	1x1	35	5	2002	7	141	2
NW	1x1	35	5	2002	7	142	2
NW	1x1	35	5	2002	7	143	2
NW	1x1	35	5	2002	7	145	1
NW	1x1	35	5	2002	7	147	1
NW	1x1	35	5	2002	7	148	2
NW	1x1	35	5	2002	7	149	2
NW	1x1	35	5	2002	7	150	2
NW	1x1	35	5	2002	7	151	2
NW	1x1	35	5	2002	7	153	4
NW	1x1	35	5	2002	7	154	1
NW	1x1	35	5	2002	7	155	2
NW	1x1	35	5	2002	7	156	1
NW	1x1	35	5	2002	7	157	3
NW	1x1	35	5	2002	7	159	2
NW	1x1	35	5	2002	7	160	1
NW	1x1	35	5	2002	7	161	1
NW	1x1	35	5	2002	7	163	4
NW	1x1	35	5	2002	7	164	1
NW	1x1	35	5	2002	7	165	3
NW	1x1	35	5	2002	7	166	2
NW	1x1	35	5	2002	7	167	4
NW	1x1	35	5	2002	7	168	1
NW	1x1	35	5	2002	7	169	7
NW	1x1	35	5	2002	7	170	2
NW	1x1	35	5	2002	7	171	2
NW	1x1	35	5	2002	7	172	3
NW	1x1	35	5	2002	7	173	3
NW	1x1	35	5	2002	7	174	1
NW	1x1	35	5	2002	7	175	1
NW	1x1	35	5	2002	7	176	3
NW	1x1	35	5	2002	7	178	2
NW	1x1	35	5	2002	7	179	1
NW	1x1	35	5	2002	7	180	1
NW	1x1	35	5	2002	7	181	1
NW	1x1	35	5	2002	7	182	1
NW	1x1	35	5	2002	7	184	1

NW	1x1	35	5	2002	7	186	3
NW	1x1	35	5	2002	7	189	3
NW	1x1	35	5	2002	7	190	5
NW	1x1	35	5	2002	7	191	1
NW	1x1	35	5	2002	7	192	1
NW	1x1	35	5	2002	7	195	4
NW	1x1	35	5	2002	7	196	2
NW	1x1	35	5	2002	7	197	1
NW	1x1	35	5	2002	7	198	2
NW	1x1	35	5	2002	7	201	1
NW	1x1	35	5	2002	7	202	2
NW	1x1	35	5	2002	7	203	2
NW	1x1	35	5	2002	7	205	4
NW	1x1	35	5	2002	7	208	1
NW	1x1	35	5	2002	7	209	2
NW	1x1	35	5	2002	7	210	2
NW	1x1	35	5	2002	7	213	1
NW	1x1	35	5	2002	7	214	1
NW	1x1	35	5	2002	7	215	1
NW	1x1	35	5	2002	7	216	1
NW	1x1	35	5	2002	7	218	1
NW	1x1	35	5	2002	7	220	3
NW	1x1	35	5	2002	7	222	1
NW	1x1	35	5	2002	7	223	4
NW	1x1	35	5	2002	7	224	2
NW	1x1	35	5	2002	7	225	2
NW	1x1	35	5	2002	7	226	2
NW	1x1	35	5	2002	7	227	1
NW	1x1	35	5	2002	7	228	1
NW	1x1	35	5	2002	7	232	3
NW	1x1	35	5	2002	7	233	1
NW	1x1	35	5	2002	7	234	1
NW	1x1	35	5	2002	7	235	2
NW	1x1	35	5	2002	7	236	1
NW	1x1	35	5	2002	7	240	1
NW	1x1	35	5	2002	7	242	1
NW	1x1	35	5	2002	7	243	1
NW	1x1	35	5	2002	7	244	1
NW	1x1	35	5	2002	7	248	1
NW	1x1	35	5	2002	7	250	2
NW	1x1	35	5	2002	7	252	1
NW	1x1	35	5	2002	7	253	1
NW	1x1	35	5	2002	7	254	1
NW	1x1	35	5	2002	7	255	1
NW	1x1	35	5	2002	7	256	1
NW	1x1	35	5	2002	7	259	2
NW	1x1	35	5	2002	7	260	2
NW	1x1	35	5	2002	7	266	1
NW	1x1	35	5	2002	7	273	1
NW	1x1	35	5	2002	7	275	1
NW	1x1	35	5	2002	7	276	1
NW	1x1	35	5	2002	7	277	2

NW	1x1	35	5	2002	7	280	1
NW	1x1	35	5	2002	7	281	1
NW	1x1	35	5	2002	7	302	2
NW	1x1	35	5	2002	7	318	1
NW	1x1	35	5	2002	7	323	1
NW	1x1	35	5	2002	7	324	1
NW	1x1	35	5	2002	7	325	1
NW	1x1	35	5	2002	7	327	1
NW	1x1	35	5	2002	7	329	1
NW	1x1	35	5	2002	7	331	2
NW	1x1	35	5	2002	7	332	1
NW	1x1	35	5	2002	8	79	1
NW	1x1	35	5	2002	8	81	1
NW	1x1	35	5	2002	8	87	1
NW	1x1	35	5	2002	8	88	1
NW	1x1	35	5	2002	8	89	1
NW	1x1	35	5	2002	8	90	1
NW	1x1	35	5	2002	8	91	1
NW	1x1	35	5	2002	8	93	1
NW	1x1	35	5	2002	8	97	1
NW	1x1	35	5	2002	8	101	1
NW	1x1	35	5	2002	8	102	1
NW	1x1	35	5	2002	8	103	1
NW	1x1	35	5	2002	8	105	1
NW	1x1	35	5	2002	8	106	3
NW	1x1	35	5	2002	8	107	2
NW	1x1	35	5	2002	8	108	1
NW	1x1	35	5	2002	8	111	1
NW	1x1	35	5	2002	8	112	1
NW	1x1	35	5	2002	8	113	1
NW	1x1	35	5	2002	8	118	1
NW	1x1	35	5	2002	8	119	1
NW	1x1	35	5	2002	8	121	1
NW	1x1	35	5	2002	8	123	1
NW	1x1	35	5	2002	8	126	1
NW	1x1	35	5	2002	8	128	2
NW	1x1	35	5	2002	8	130	1
NW	1x1	35	5	2002	8	133	1
NW	1x1	35	5	2002	8	135	1
NW	1x1	35	5	2002	8	136	1
NW	1x1	35	5	2002	8	138	1
NW	1x1	35	5	2002	8	139	1
NW	1x1	35	5	2002	8	141	1
NW	1x1	35	5	2002	8	143	1
NW	1x1	35	5	2002	8	145	1
NW	1x1	35	5	2002	8	146	1
NW	1x1	35	5	2002	8	149	1
NW	1x1	35	5	2002	8	151	2
NW	1x1	35	5	2002	8	153	2
NW	1x1	35	5	2002	8	157	1
NW	1x1	35	5	2002	8	167	1
NW	1x1	35	5	2002	8	170	1

NW	1x1	35	5	2002	8	173	1
NW	1x1	35	5	2002	8	175	3
NW	1x1	35	5	2002	8	176	1
NW	1x1	35	5	2002	8	179	1
NW	1x1	35	5	2002	8	182	1
NW	1x1	35	5	2002	8	183	1
NW	1x1	35	5	2002	8	184	1
NW	1x1	35	5	2002	8	185	3
NW	1x1	35	5	2002	8	188	1
NW	1x1	35	5	2002	8	192	1
NW	1x1	35	5	2002	8	196	2
NW	1x1	35	5	2002	8	200	1
NW	1x1	35	5	2002	8	203	2
NW	1x1	35	5	2002	8	204	2
NW	1x1	35	5	2002	8	208	1
NW	1x1	35	5	2002	8	213	1
NW	1x1	35	5	2002	8	230	1
NW	1x1	35	5	2002	8	232	1
NW	1x1	35	5	2002	8	238	1
NW	1x1	35	5	2002	8	240	1
NW	1x1	35	5	2002	8	254	1
NW	1x1	35	5	2002	8	276	1
NW	1x1	35	5	2002	8	282	1
NW	1x1	35	5	2002	8	291	1
NW	1x1	35	5	2002	8	338	1
NW	1x1	35	5	2002	8	346	1
NW	1x1	35	5	2003	7	60	1
NW	1x1	35	5	2003	7	66	1
NW	1x1	35	5	2003	7	68	1
NW	1x1	35	5	2003	7	72	1
NW	1x1	35	5	2003	7	79	1
NW	1x1	35	5	2003	7	84	1
NW	1x1	35	5	2003	7	91	2
NW	1x1	35	5	2003	7	92	1
NW	1x1	35	5	2003	7	94	1
NW	1x1	35	5	2003	7	97	1
NW	1x1	35	5	2003	7	99	1
NW	1x1	35	5	2003	7	100	1
NW	1x1	35	5	2003	7	102	1
NW	1x1	35	5	2003	7	103	1
NW	1x1	35	5	2003	7	105	5
NW	1x1	35	5	2003	7	106	1
NW	1x1	35	5	2003	7	107	4
NW	1x1	35	5	2003	7	108	3
NW	1x1	35	5	2003	7	109	3
NW	1x1	35	5	2003	7	111	2
NW	1x1	35	5	2003	7	112	2
NW	1x1	35	5	2003	7	113	7
NW	1x1	35	5	2003	7	114	3
NW	1x1	35	5	2003	7	115	6
NW	1x1	35	5	2003	7	116	7
NW	1x1	35	5	2003	7	117	5

NW	1x1	35	5	2003	7	118	6
NW	1x1	35	5	2003	7	119	2
NW	1x1	35	5	2003	7	120	7
NW	1x1	35	5	2003	7	121	5
NW	1x1	35	5	2003	7	122	5
NW	1x1	35	5	2003	7	123	7
NW	1x1	35	5	2003	7	124	4
NW	1x1	35	5	2003	7	125	7
NW	1x1	35	5	2003	7	126	4
NW	1x1	35	5	2003	7	127	7
NW	1x1	35	5	2003	7	128	2
NW	1x1	35	5	2003	7	129	4
NW	1x1	35	5	2003	7	130	6
NW	1x1	35	5	2003	7	131	4
NW	1x1	35	5	2003	7	132	8
NW	1x1	35	5	2003	7	133	9
NW	1x1	35	5	2003	7	134	7
NW	1x1	35	5	2003	7	135	4
NW	1x1	35	5	2003	7	136	5
NW	1x1	35	5	2003	7	137	6
NW	1x1	35	5	2003	7	138	4
NW	1x1	35	5	2003	7	139	4
NW	1x1	35	5	2003	7	140	6
NW	1x1	35	5	2003	7	141	3
NW	1x1	35	5	2003	7	142	5
NW	1x1	35	5	2003	7	143	11
NW	1x1	35	5	2003	7	144	1
NW	1x1	35	5	2003	7	145	3
NW	1x1	35	5	2003	7	146	4
NW	1x1	35	5	2003	7	147	1
NW	1x1	35	5	2003	7	148	3
NW	1x1	35	5	2003	7	149	2
NW	1x1	35	5	2003	7	150	3
NW	1x1	35	5	2003	7	151	3
NW	1x1	35	5	2003	7	152	5
NW	1x1	35	5	2003	7	153	1
NW	1x1	35	5	2003	7	154	2
NW	1x1	35	5	2003	7	155	3
NW	1x1	35	5	2003	7	156	2
NW	1x1	35	5	2003	7	157	1
NW	1x1	35	5	2003	7	158	3
NW	1x1	35	5	2003	7	160	2
NW	1x1	35	5	2003	7	161	3
NW	1x1	35	5	2003	7	162	2
NW	1x1	35	5	2003	7	163	1
NW	1x1	35	5	2003	7	164	2
NW	1x1	35	5	2003	7	165	2
NW	1x1	35	5	2003	7	166	3
NW	1x1	35	5	2003	7	167	1
NW	1x1	35	5	2003	7	169	1
NW	1x1	35	5	2003	7	170	1
NW	1x1	35	5	2003	7	171	2



NW	1x1	35	5	2003	7	172	1
NW	1x1	35	5	2003	7	173	3
NW	1x1	35	5	2003	7	174	2
NW	1x1	35	5	2003	7	176	1
NW	1x1	35	5	2003	7	177	3
NW	1x1	35	5	2003	7	178	1
NW	1x1	35	5	2003	7	179	2
NW	1x1	35	5	2003	7	180	4
NW	1x1	35	5	2003	7	181	3
NW	1x1	35	5	2003	7	182	1
NW	1x1	35	5	2003	7	184	3
NW	1x1	35	5	2003	7	185	3
NW	1x1	35	5	2003	7	186	1
NW	1x1	35	5	2003	7	188	1
NW	1x1	35	5	2003	7	189	1
NW	1x1	35	5	2003	7	190	2
NW	1x1	35	5	2003	7	191	2
NW	1x1	35	5	2003	7	193	4
NW	1x1	35	5	2003	7	194	2
NW	1x1	35	5	2003	7	196	1
NW	1x1	35	5	2003	7	197	2
NW	1x1	35	5	2003	7	200	1
NW	1x1	35	5	2003	7	201	3
NW	1x1	35	5	2003	7	202	2
NW	1x1	35	5	2003	7	203	1
NW	1x1	35	5	2003	7	204	1
NW	1x1	35	5	2003	7	205	1
NW	1x1	35	5	2003	7	211	2
NW	1x1	35	5	2003	7	212	2
NW	1x1	35	5	2003	7	213	1
NW	1x1	35	5	2003	7	221	3
NW	1x1	35	5	2003	7	222	1
NW	1x1	35	5	2003	7	225	1
NW	1x1	35	5	2003	7	226	2
NW	1x1	35	5	2003	7	227	3
NW	1x1	35	5	2003	7	228	1
NW	1x1	35	5	2003	7	229	1
NW	1x1	35	5	2003	7	230	1
NW	1x1	35	5	2003	7	231	1
NW	1x1	35	5	2003	7	232	1
NW	1x1	35	5	2003	7	234	2
NW	1x1	35	5	2003	7	236	1
NW	1x1	35	5	2003	7	242	2
NW	1x1	35	5	2003	7	244	1
NW	1x1	35	5	2003	7	245	1
NW	1x1	35	5	2003	7	250	1
NW	1x1	35	5	2003	7	251	1
NW	1x1	35	5	2003	7	252	1
NW	1x1	35	5	2003	7	255	1
NW	1x1	35	5	2003	7	258	1
NW	1x1	35	5	2003	7	260	3
NW	1x1	35	5	2003	7	269	1

NW	1x1	35	5	2003	7	273	1
NW	1x1	35	5	2003	7	276	1
NW	1x1	35	5	2003	7	277	1
NW	1x1	35	5	2003	7	284	1
NW	1x1	35	5	2003	7	285	1
NW	1x1	35	5	2003	7	288	1
NW	1x1	35	5	2003	7	298	1
NW	1x1	35	5	2003	7	335	1
NW	1x1	35	5	2003	8	68	1
NW	1x1	35	5	2003	8	98	2
NW	1x1	35	5	2003	8	99	1
NW	1x1	35	5	2003	8	107	1
NW	1x1	35	5	2003	8	113	1
NW	1x1	35	5	2003	8	114	2
NW	1x1	35	5	2003	8	115	1
NW	1x1	35	5	2003	8	116	1
NW	1x1	35	5	2003	8	117	1
NW	1x1	35	5	2003	8	121	1
NW	1x1	35	5	2003	8	125	1
NW	1x1	35	5	2003	8	126	1
NW	1x1	35	5	2003	8	127	1
NW	1x1	35	5	2003	8	129	3
NW	1x1	35	5	2003	8	131	1
NW	1x1	35	5	2003	8	132	2
NW	1x1	35	5	2003	8	133	2
NW	1x1	35	5	2003	8	134	1
NW	1x1	35	5	2003	8	135	1
NW	1x1	35	5	2003	8	136	1
NW	1x1	35	5	2003	8	137	3
NW	1x1	35	5	2003	8	138	3
NW	1x1	35	5	2003	8	139	1
NW	1x1	35	5	2003	8	140	2
NW	1x1	35	5	2003	8	141	1
NW	1x1	35	5	2003	8	143	1
NW	1x1	35	5	2003	8	147	1
NW	1x1	35	5	2003	8	152	1
NW	1x1	35	5	2003	8	154	1
NW	1x1	35	5	2003	8	156	1
NW	1x1	35	5	2003	8	158	1
NW	1x1	35	5	2003	8	160	1
NW	1x1	35	5	2003	8	179	3
NW	1x1	35	5	2003	8	184	1
NW	1x1	35	5	2003	8	191	1
NW	1x1	35	5	2003	8	215	1
NW	1x1	35	5	2004	7	73	1
NW	1x1	35	5	2004	7	85	1
NW	1x1	35	5	2004	7	101	1
NW	1x1	35	5	2004	7	107	1
NW	1x1	35	5	2004	7	115	1
NW	1x1	35	5	2004	7	116	1
NW	1x1	35	5	2004	7	119	1
NW	1x1	35	5	2004	7	120	1

NW	1x1	35	5	2004	7	121	1
NW	1x1	35	5	2004	7	124	2
NW	1x1	35	5	2004	7	125	1
NW	1x1	35	5	2004	7	126	1
NW	1x1	35	5	2004	7	128	1
NW	1x1	35	5	2004	7	129	1
NW	1x1	35	5	2004	7	130	2
NW	1x1	35	5	2004	7	131	1
NW	1x1	35	5	2004	7	132	1
NW	1x1	35	5	2004	7	133	1
NW	1x1	35	5	2004	7	134	2
NW	1x1	35	5	2004	7	135	2
NW	1x1	35	5	2004	7	136	5
NW	1x1	35	5	2004	7	137	1
NW	1x1	35	5	2004	7	138	2
NW	1x1	35	5	2004	7	139	2
NW	1x1	35	5	2004	7	140	8
NW	1x1	35	5	2004	7	143	3
NW	1x1	35	5	2004	7	144	2
NW	1x1	35	5	2004	7	145	4
NW	1x1	35	5	2004	7	146	1
NW	1x1	35	5	2004	7	147	3
NW	1x1	35	5	2004	7	148	6
NW	1x1	35	5	2004	7	149	3
NW	1x1	35	5	2004	7	151	4
NW	1x1	35	5	2004	7	152	3
NW	1x1	35	5	2004	7	153	2
NW	1x1	35	5	2004	7	154	1
NW	1x1	35	5	2004	7	155	2
NW	1x1	35	5	2004	7	156	3
NW	1x1	35	5	2004	7	157	3
NW	1x1	35	5	2004	7	158	7
NW	1x1	35	5	2004	7	159	2
NW	1x1	35	5	2004	7	161	3
NW	1x1	35	5	2004	7	162	1
NW	1x1	35	5	2004	7	163	1
NW	1x1	35	5	2004	7	164	2
NW	1x1	35	5	2004	7	165	2
NW	1x1	35	5	2004	7	166	2
NW	1x1	35	5	2004	7	167	3
NW	1x1	35	5	2004	7	168	2
NW	1x1	35	5	2004	7	169	3
NW	1x1	35	5	2004	7	170	2
NW	1x1	35	5	2004	7	171	1
NW	1x1	35	5	2004	7	172	4
NW	1x1	35	5	2004	7	173	2
NW	1x1	35	5	2004	7	176	4
NW	1x1	35	5	2004	7	177	2
NW	1x1	35	5	2004	7	178	3
NW	1x1	35	5	2004	7	180	2
NW	1x1	35	5	2004	7	183	2
NW	1x1	35	5	2004	7	184	2

NW	1x1	35	5	2004	7	185	2
NW	1x1	35	5	2004	7	189	2
NW	1x1	35	5	2004	7	190	1
NW	1x1	35	5	2004	7	193	2
NW	1x1	35	5	2004	7	196	1
NW	1x1	35	5	2004	7	197	3
NW	1x1	35	5	2004	7	198	1
NW	1x1	35	5	2004	7	199	5
NW	1x1	35	5	2004	7	200	4
NW	1x1	35	5	2004	7	201	2
NW	1x1	35	5	2004	7	202	1
NW	1x1	35	5	2004	7	207	2
NW	1x1	35	5	2004	7	208	1
NW	1x1	35	5	2004	7	210	2
NW	1x1	35	5	2004	7	212	1
NW	1x1	35	5	2004	7	218	1
NW	1x1	35	5	2004	7	219	1
NW	1x1	35	5	2004	7	220	1
NW	1x1	35	5	2004	7	221	1
NW	1x1	35	5	2004	7	222	1
NW	1x1	35	5	2004	7	223	3
NW	1x1	35	5	2004	7	226	1
NW	1x1	35	5	2004	7	231	4
NW	1x1	35	5	2004	7	233	1
NW	1x1	35	5	2004	7	236	1
NW	1x1	35	5	2004	7	239	2
NW	1x1	35	5	2004	7	244	1
NW	1x1	35	5	2004	7	245	1
NW	1x1	35	5	2004	7	247	1
NW	1x1	35	5	2004	7	254	1
NW	1x1	35	5	2004	7	257	1
NW	1x1	35	5	2004	7	260	1
NW	1x1	35	5	2004	7	265	1
NW	1x1	35	5	2004	7	269	1
NW	1x1	35	5	2004	7	274	1
NW	1x1	35	5	2004	7	278	1
NW	1x1	35	5	2004	7	279	3
NW	1x1	35	5	2004	7	282	1
NW	1x1	35	5	2004	7	289	1
NW	1x1	35	5	2004	7	292	1
NW	1x1	35	5	2004	7	295	1
NW	1x1	35	5	2004	7	298	1
NW	1x1	35	5	2004	7	301	1
NW	1x1	35	5	2004	7	304	1
NW	1x1	35	5	2004	7	308	1
NW	1x1	35	5	2004	7	311	1
NW	1x1	35	5	2004	7	322	1
NW	1x1	35	5	2004	7	327	1
NW	1x1	35	5	2004	7	329	1
NW	1x1	35	5	2004	7	338	2
NW	1x1	35	5	2004	7	342	1
NW	1x1	35	5	2004	8	166	1

NW	1x1	35	5	2004	8	171	1
NW	1x1	35	5	2005	7	157	1
NW	1x1	35	5	2005	7	187	1
NW	1x1	35	5	2005	7	193	1
NW	1x1	35	5	2005	7	200	1
NW	1x1	35	5	2005	7	242	1
NW	1x1	35	5	2006	7	79	1
NW	1x1	35	5	2006	7	103	1
NW	1x1	35	5	2006	7	108	1
NW	1x1	35	5	2006	7	110	1
NW	1x1	35	5	2006	7	117	1
NW	1x1	35	5	2006	7	120	1
NW	1x1	35	5	2006	7	135	1
NW	1x1	35	5	2006	7	141	1
NW	1x1	35	5	2006	7	145	1
NW	1x1	35	5	2006	7	151	1
NW	1x1	35	5	2006	8	95	1
NW	1x1	35	5	2006	8	99	1
NW	1x1	35	5	2006	8	108	2
NW	1x1	35	5	2006	8	112	1
NW	1x1	35	5	2006	8	118	1
NW	1x1	35	5	2006	8	120	1
NW	1x1	35	5	2006	8	121	1
NW	1x1	35	5	2006	8	122	1
NW	1x1	35	5	2006	8	130	1
NW	1x1	35	5	2006	8	140	1
NW	1x1	35	5	2006	8	157	1
NW	1x1	35	5	2006	8	166	1
NW	1x1	35	5	2007	7	181	1
NW	1x1	35	5	2007	7	200	1
NW	1x1	35	5	2007	8	136	1
NW	1x1	35	5	2007	8	160	1
NW	1x1	35	5	2007	8	166	1
NW	1x1	35	5	2007	8	204	1
NW	1x1	35	5	2007	8	227	1
NW	1x1	35	5	2007	9	153	1
NW	1x1	35	5	2009	9	60	1
NW	1x1	35	5	2009	9	70	1
NW	1x1	35	5	2009	9	80	1
NW	1x1	35	5	2009	9	140	1
NW	1x1	35	5	2009	9	200	2
NW	1x1	35	5	2009	9	270	1
NW	1x1	35	5	2009	9	280	1
NW	1x1	35	5	2009	10	130	1
NW	1x1	35	5	2009	10	137	1
NW	1x1	35	5	2009	10	140	1
NW	1x1	35	5	2009	10	220	1