

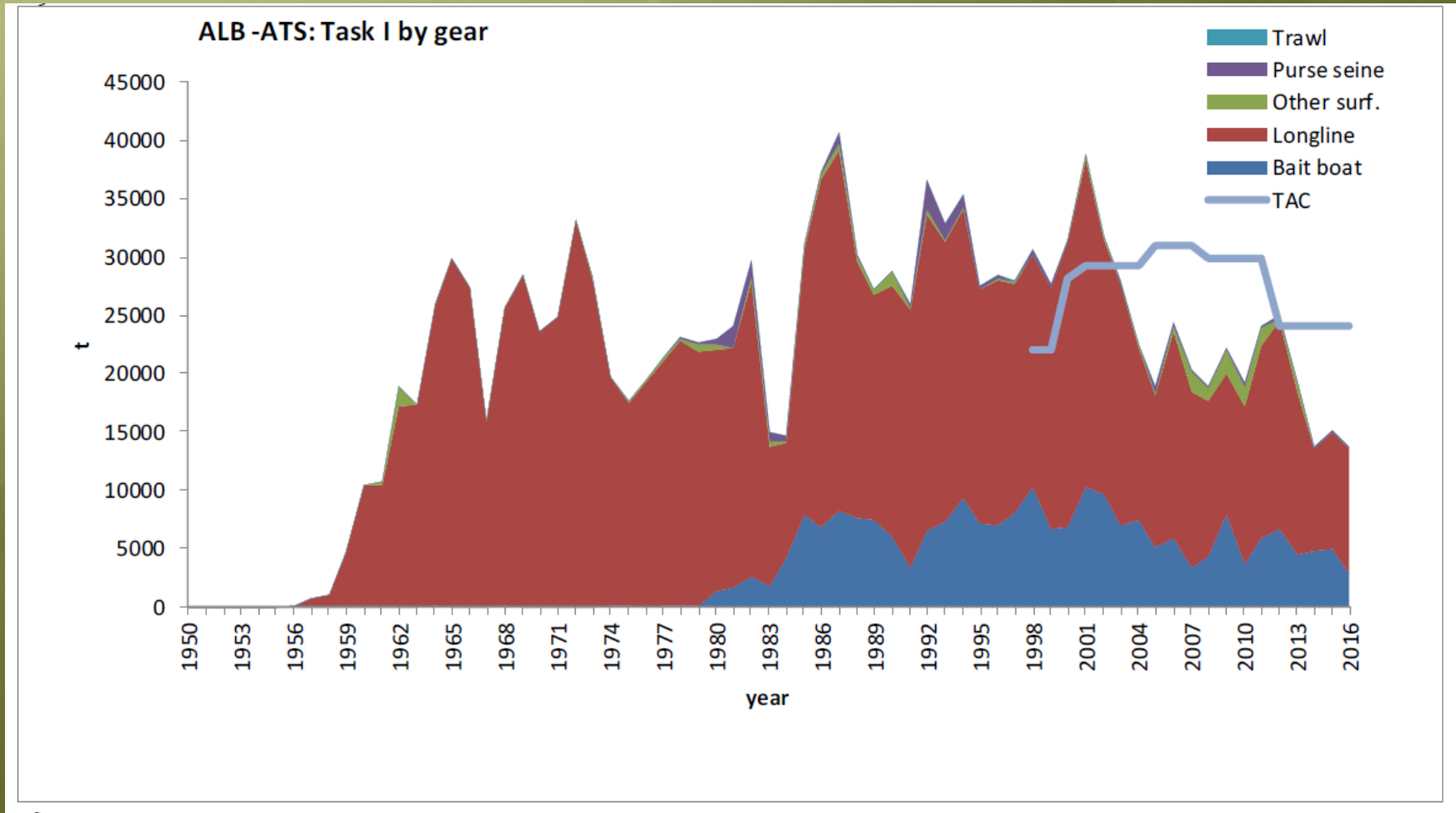
2017

ICCATSCRS Report

Panel 3 Temperate tunas South



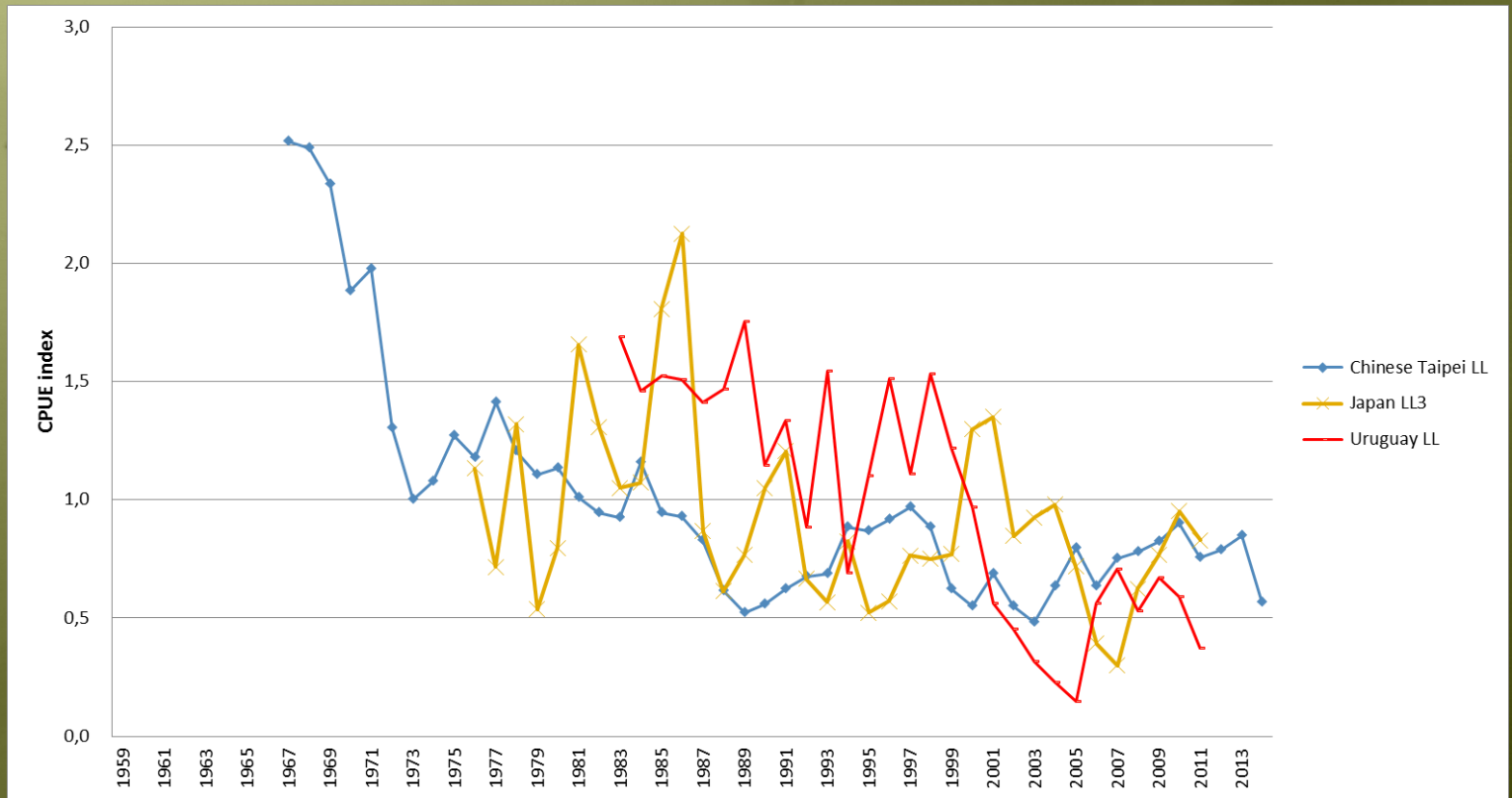
ALB South: Catches



- Most of the catch came from LL (Chinese Taipei) and BB (South Africa & Namibia)
- Catch below TAC in recent years

- ALB South: relative abundance based on CPUE

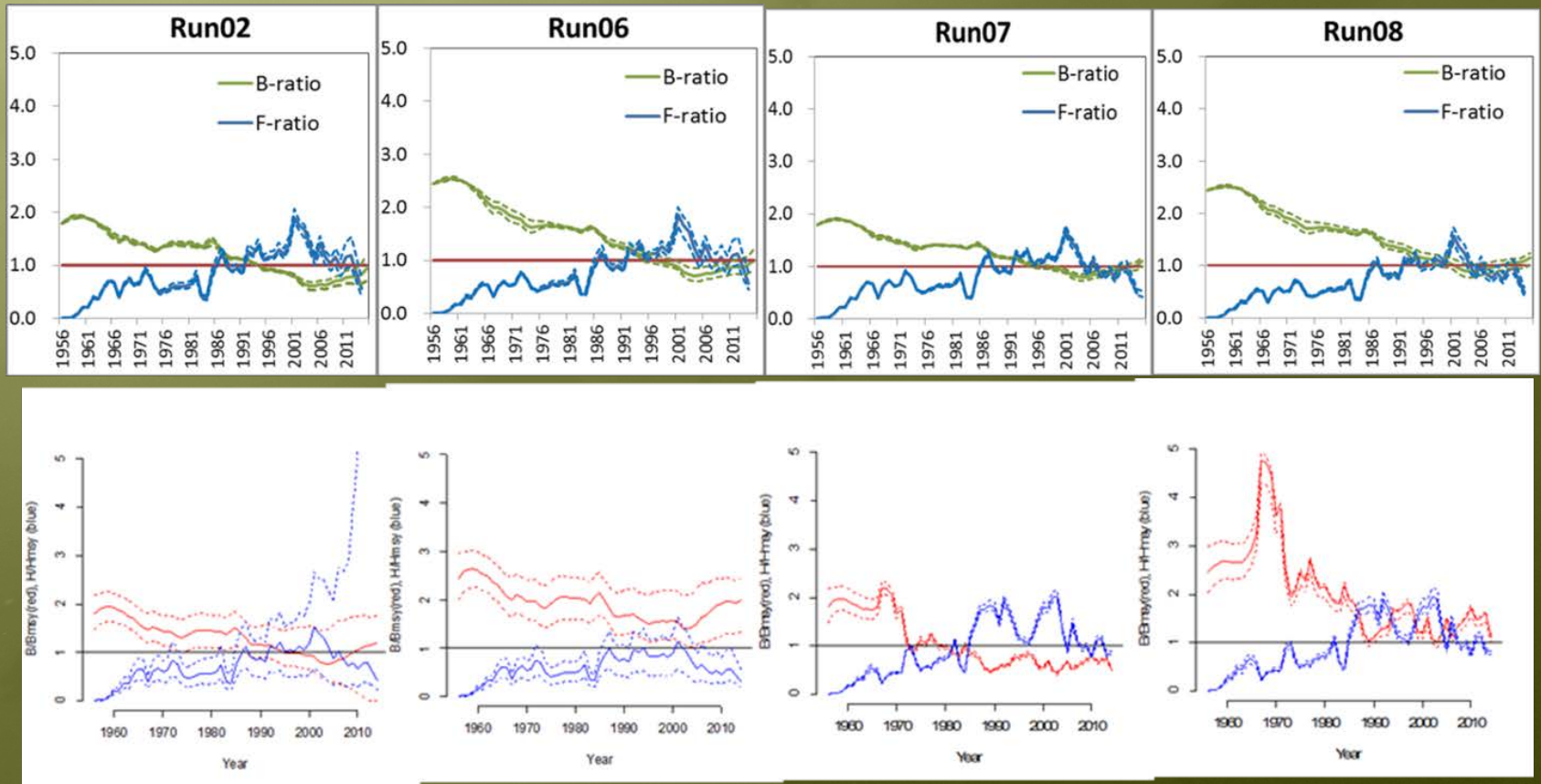
CPUE



- General decrease followed by stabilization and some increase

- ALB South: stock status ASPIC and BSP

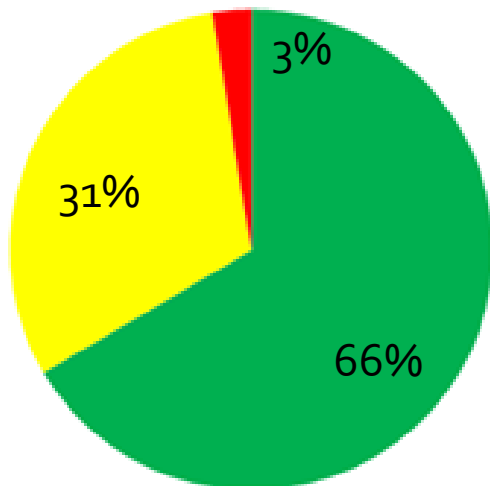
B/Bmsy or F/Fmsy



- Consistent trends
- Larger c.i. for BSP (equal weights)

- ALB South: Stock Status

8 scenarios



Improved stock status:

$B/B_{msy} = 1.10$ (0.51-1.80)

$F/F_{msy} = 0.54$ (0.31-0.87)

$MSY = 25,901$ (15,270-31,768) t

ASPIC Run02



ASPIC Run06



ASPIC Run07



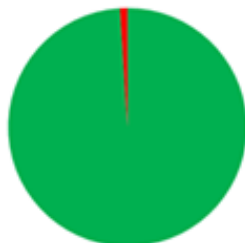
ASPIC Run08



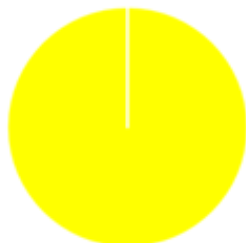
BSPM EQ SH



BSPM EQ FOX



BSPM CW SH



BSPM CW FOX



- ALB South: Outlook

TAC

Catch (t)	2017	2018	2019	2020	2021	2022	2023	2024	2025	2026	2027	2028	2029
12,000	74%	80%	94%	95%	95%	96%	96%	96%	96%	96%	96%	96%	96%
14,000	74%	78%	93%	94%	95%	95%	95%	96%	96%	96%	96%	96%	96%
16,000	73%	77%	90%	93%	94%	94%	95%	95%	95%	95%	95%	95%	95%
18,000	68%	72%	83%	89%	91%	92%	92%	93%	93%	93%	93%	94%	94%
20,000	63%	65%	71%	81%	83%	84%	84%	85%	86%	86%	86%	87%	87%
22,000	62%	63%	65%	73%	78%	79%	79%	79%	80%	80%	80%	80%	80%
24,000	61%	60%	60%	63%	69%	72%	72%	72%	71%	71%	70%	70%	69%
26,000	55%	54%	53%	52%	52%	55%	56%	57%	56%	55%	54%	53%	52%
28,000	48%	45%	42%	40%	37%	35%	35%	35%	35%	35%	35%	35%	35%
30,000	39%	35%	33%	30%	28%	26%	24%	23%	21%	20%	19%	18%	18%
32,000	32%	29%	26%	24%	22%	19%	17%	16%	14%	13%	12%	11%	11%
34,000	28%	25%	22%	19%	15%	13%	11%	9%	8%	7%	7%	6%	6%

- Maximum catch that enables green zone in 2020 with probability >60%:

Model	Run	Catch
ASPIC	Run2	26,000
	Run6	24,000
	Run7	26,000
	Run8	26,000
BSPM	EQ SH	30,000
	EQ FOX	34,000
	CW SH	22,000
	CW FOX	18,000
Average		25,750
Median		26,000

- ALB South: Management recommendations (same as 2016)

- In 2016 the Commission established a new TAC of 24,000 t for 2017-2020 [Rec. 16-07]. The Committee noted that, since 2004, reported catches remained below 24,000 t, except in 2006, 2011 and 2012, where reported catches were slightly above this value. As in the case of the North Atlantic, the Committee did not test the effect of perfect implementation of the TAC.

	South Atlantic
Maximum Sustainable Yield	25,901 t (15,270-31,768) ²
Current (2017) TAC	24,000 t
Current (2016) Yield	13,679 t
Yield in last year of assessment (2014)	13,677 t
Yield in last year of assessment (2015)	
B _{MSY}	120,465 t (71,312-208,438) ²
F _{MSY}	0.202 (0.119-0.373) ²
B ₂₀₁₅ /B _{MSY}	1.10 (0.51-1.80) ²
B ₂₀₁₅ /B _{Lim} ³	
F ₂₀₁₄ /F _{MSY}	0.54 (0.31-0.87) ²
F ₂₀₁₅ /F _{MSY}	
Stock Status	Overfished: NO
	Overfishing: NO

Executive Summary Table